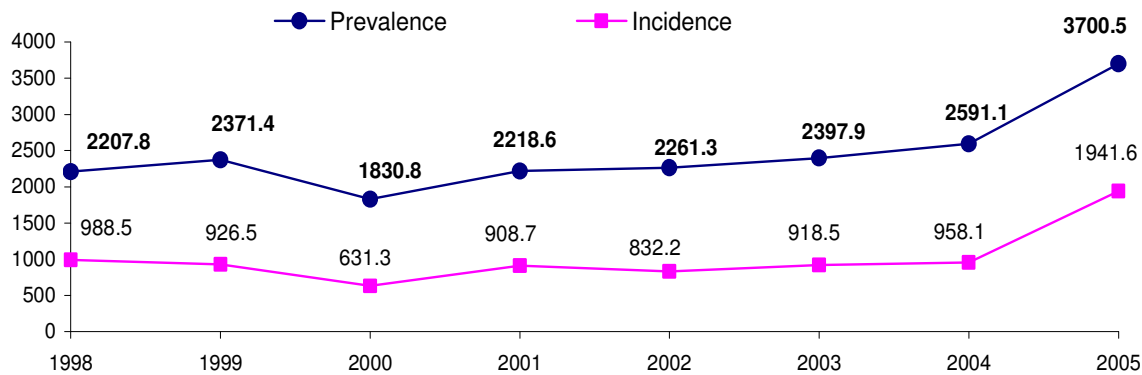
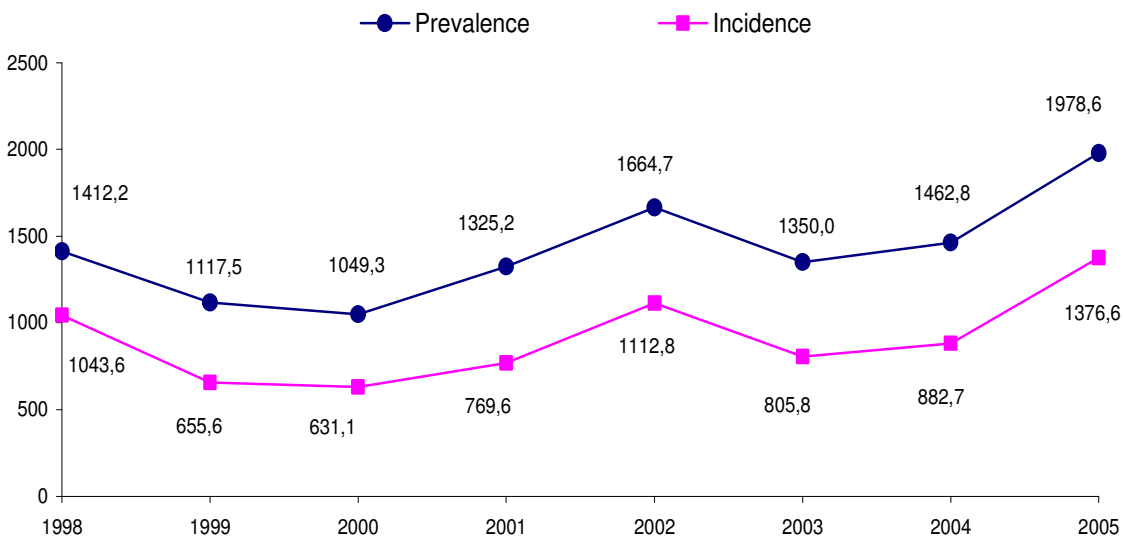


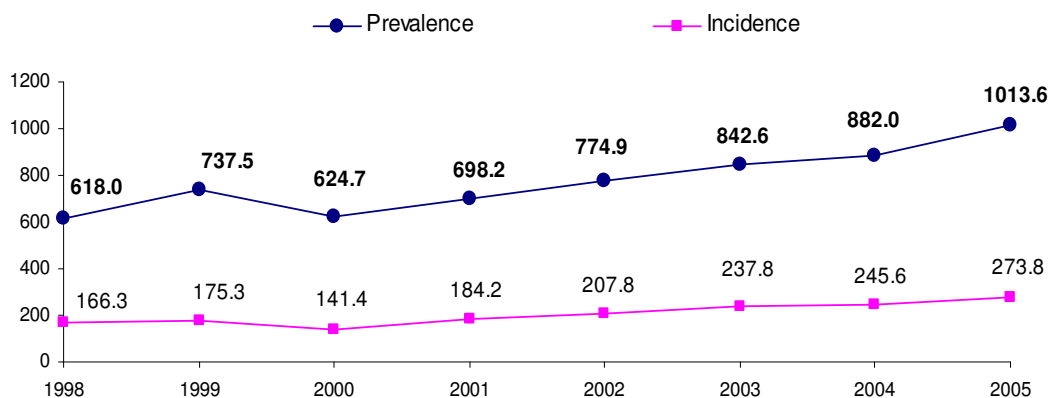
### Diseases of the Digestive System



**Figure 1.** Diseases of the digestive system, incidence and prevalence rates per 100,000 population, Georgia, 1998 - 2005



**Figure 2.** Diseases of the digestive system in children, incidence and prevalence rates per 100,000 children, Georgia, 1998 - 2005



**Figure 3.** Cholelithiasis, cholecystitis, cholangiitis incidence and prevalence rates per 100,000 population, Georgia, 1998 - 2005

Table 1.

## Incidence and prevalence of the diseases of the digestive system, Georgia, 1998 - 2005

	1998	1999	2000	2001	2002	2003	2004	2005
Registered cases, all ages	99,457	105,998	81,198	97,651	98,854	103,803	113,272	161,769
Prevalence rate per 100,000 population	2,207.8	2,371.4	1,830.8	2,218.6	2,261.3	2,397.9	2,591.1	3,700.5
Registered cases in children	13,936	10,786	9,900	12,250	15,249	11,414	13,398	18,123
Prevalence rate per 100,000 children	1,412.2	1,117.5	1,049.3	1,325.2	1,664.7	1,350.0	1,462.8	1,978.6
New cases, all ages	44,533	41,412	27,999	39,997	36,380	39,759	41,885	84,876
Incidence rate per 100,000 population	988.5	926.5	631.3	908.7	832.2	918.5	958.1	1,941.6
New cases in children	10,298	6,328	5,954	7,114	10,193	6,813	8,085	12,609
Incidence rate per 100,000 children	1,043.6	655.6	631.1	769.6	1,112.8	805.8	882.7	1,376.6

Table 2.

## Prevalence of diseases of the digestive system, distribution according some groups of diseases, Georgia, 2005

	Total number of registered cases, all ages	Prevalence rate per 100,000 population	Total number of registered cases in children	Prevalence rate per 100,000 children
Diseases of the digestive system	161,769	3,700.5	18,123	1,978.6
	Including:			
Gastric and duodenal ulcer	18,670	427.1	156	17.0
Gastritis, duodenitis	34,735	794.4	3,488	380.8
Cholelithiasis, cholecystitis, cholangiitis	44,308	1,013.6	3,599	392.9
Disorder of pancreas	1,546	35.4	27	2.9

Table 3.

## Incidence of the diseases of the digestive system according to the regions, Georgia, 2004 - 2005

	2004				2005			
	All ages		In children		All ages		In children	
	Total number of new cases	Incidence rate per 100,000 population	Total number of new cases	Incidence rate per 100,000 children	Total number of new cases	Incidence rate per 100,000 population	Total number of new cases	Incidence rate per 100,000 children
Abkhazia	-	-	-	-	4,352	-	614	-
Tbilisi	15,534	1,436.1	3,240	1,538.9	56,856	5,255.7	7,453	3,540.0
Ajara	1,931	513.5	372	411.7	2,075	551	377	417.3
Guria	1,960	1,367.2	650	2,300.6	1,577	1,100.1	609	2,155.4
Racha-Lechkhumi and Kvemo Svaneti	295	578.8	74	885.4	341	669.0	65	777.7
Samegrelo	3,832	822.1	516	554.0	4,245	910.7	558	599.1
Imereti	5,567	795.7	836	615.0	5,784	826.7	1,203	885.0
Kakheti	2,824	693.5	682	804.0	2,876	706.3	643	758.1
Mtskheta-Mtianeti	789	629.0	122	470.2	920	733.4	148	570.4
Samtskhe-Javakheti	1,305	628.6	31	63.1	1,667	803.0	76	154.6
Kvemo Kartli	1,584	318.4	208	172.5	1,856	373.0	296	245.5
Shida Kartli	1,853	590.1	543	793.0	2,164	689.1	567	828.0
<b>Georgia</b>	<b>41,885</b>	<b>958.1</b>	<b>8,085</b>	<b>882.7</b>	<b>84,876</b>	<b>1,941.6</b>	<b>12,609</b>	<b>1,376.6</b>

Table 4.

## Diseases of the digestive system, hospitalization and case fatality rates in regions, Georgia, 2004 – 2005

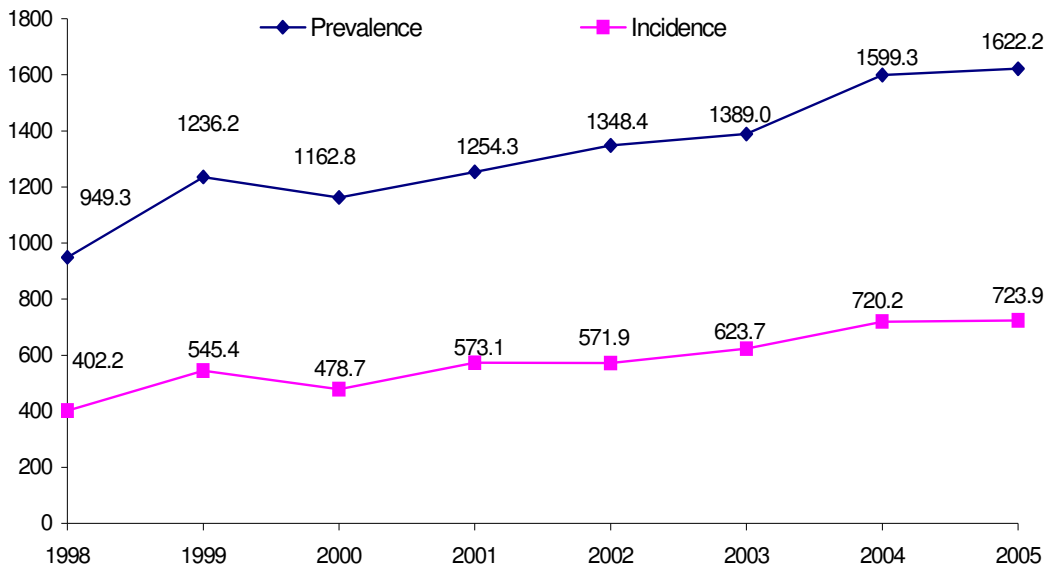
	2004						2005					
	All ages			In children			All ages			In children		
	Total number of hospital discharges	Hospitalization rate per 100,000 population	Case fatality rate (%)	Total number of hospital discharges	Hospitalization rate per 100,000 population	Case fatality rate (%)	Total number of hospital discharges	Hospitalization rate per 100,000 population	Case fatality rate (%)	Total number of hospital discharges	Hospitalization rate per 100,000 population	Case fatality rate (%)
Tbilisi	9,945	919.4	2.3	1,687	801.3	0.4	11,179	1033.5	2.4	1946	924.3	0.8
Ajara	2,035	541.2	2.0	433	479.3	0.2	2,506	666.5	2.1	779	862.2	0.3
Guria	573	399.7	0.9	102	361.0	0.0	618	431.1	1.5	89	315.0	0.0
Racha-Lechkhumi and Kvemo Svaneti	448	879.0	0.7	59	705.9	0.0	302	592.5	0.7	74	885.4	0.0
Samegrelo	1,656	355.3	0.7	219	235.1	0.5	1,397	299.7	1.2	203	218.0	0.0
Imereti	3,717	531.3	0.9	445	327.4	0.2	4,599	657.3	1.2	357	262.2	0.0
Kakheti	1,735	426.1	1.4	175	206.3	0.0	1,988	488.2	1.0	186	219.3	0.0
Mtskheta-Mtianeti	403	321.3	0.5	31	119.5	0.0	1,088	867.3	0.2	32	123.3	0.0
Samtskhe-Javakheti	885	426.3	0.7	180	366.2	0.0	612	294.8	0.7	111	225.8	0.0
Kvemo Kartli	1,821	366.0	1.8	285	236.4	0.0	1,852	372.2	0.8	246	204.0	0.0
Shida Kartli	1,519	483.7	0.9	260	379.7	0.0	1,739	553.7	1.0	276	403.0	0.0
Abkhazia							43	-	0.0	-	-	-
Departments other that the MOLHSA							357	-	0.6	-	-	-
<b>Georgia</b>	<b>26,269</b>	<b>600.9</b>	<b>1.6</b>	<b>3,909</b>	<b>426.8</b>	<b>0.3</b>	<b>28,280</b>	<b>646.9</b>	<b>1.7</b>	<b>4299</b>	<b>469.3</b>	<b>0.4</b>

Table 5.

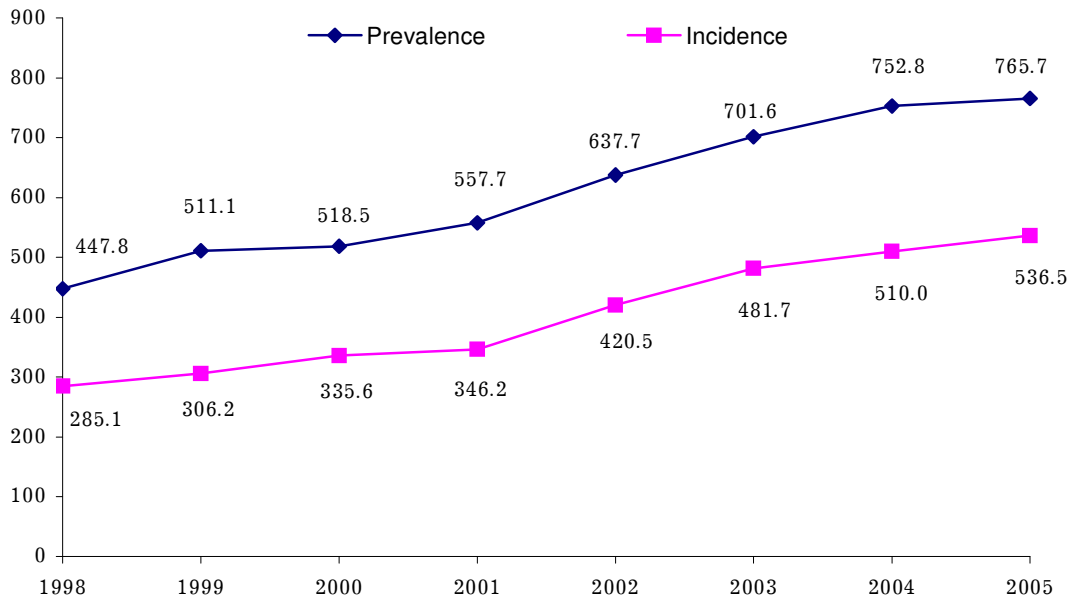
## Diseases of the digestive system, hospitalization according to some groups of diseases, Georgia, 2005

	All ages		In children	
	Total number of hospital discharges	Case fatality rate (%)	Total number of hospital discharges	Case fatality rate (%)
<b>Diseases of the digestive system</b>	<b>28,280</b>	<b>1.7</b>	<b>4,299</b>	<b>0.4</b>
<b>Including:</b>				
Gastric and duodenal ulcer	2,311	1.6	15	0
Gastritis, duodenitis	1,103	1.3	221	0
Cholelithiasis, cholecystitis, cholangiitis	3,536	0.8	40	0

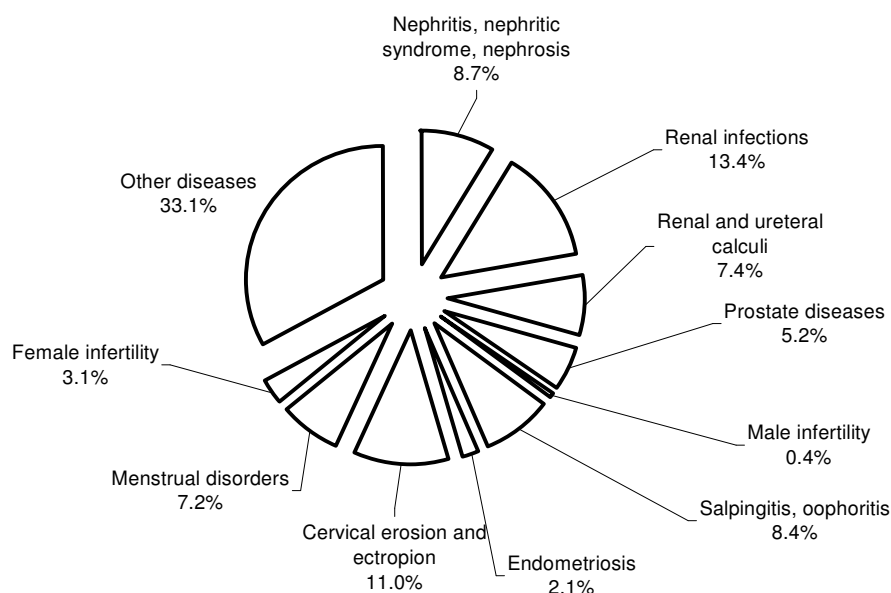
**Diseases of the Genitourinary System**



**Figure 1.** Diseases of the genitourinary system, incidence and prevalence rates per 100,000 population, Georgia, 1998 - 2005



**Figure 2.** Diseases of the genitourinary system in children, incidence and prevalence rates per 100,000 children, Georgia, 1998 - 2005



**Figure 3.** Diseases of the genitourinary system, distribution of registered cases according to some groups of diseases, Georgia, 2005

**Table 1.**  
**Incidence and prevalence of diseases of the genitourinary system, Georgia, 1998 - 2005**

	1998	1999	2000	2001	2002	2003	2004	2005
<b>Total number of registered cases, all ages</b>	42,764	55,255	51,574	55,205	58,945	60,127	69,913	70,913
<i>Prevalence rate per 100,000 population</i>	949.3	1,236.2	1,162.8	1,254.3	1,348.4	1,389.0	1,599.3	1,622.2
<b>Total number of registered cases in children</b>	4,419	4,933	4,892	5,155	5,841	5,932	6,895	7,013
<i>Prevalence rate per 100,000 children</i>	447.8	511.1	518.5	557.7	637.7	701.6	752.8	765.7
<b>Total number of new cases, all ages</b>	18,119	24,380	21,233	25,223	25,000	27,001	31,485	31,644
<i>Incidence rate per 100,000 population</i>	402.2	545.4	478.7	573.1	571.9	623.7	720.2	723.9
<b>Total number of new cases in children</b>	2,813	2,955	3,166	3,200	3,852	4,073	4,671	4,914
<i>Incidence rate per 100,000 children</i>	285.1	306.2	335.6	346.2	420.5	481.7	510.0	536.5

Table 2.

Diseases of the genitourinary system in regions, incidence and prevalence rates per 100,000 population, Georgia, 2004 - 2005

	2004				2005			
	Prevalence rate		Incidence rate		Prevalence rate		Incidence rate	
	All ages	In children	All ages	In children	All ages	In children	All ages	In children
Ajara	1,571.2	521.3	831.1	352.0	1,802.3	519.1	866.7	287.8
Tbilisi	1,342.9	884.4	519.3	648.8	1,495.3	1,022.6	657.0	792.7
Kakheti	1,127.5	423.2	466.9	275.9	1,246.6	449.2	523.6	280.6
Imereti	1,273.2	753.3	581.4	514.2	1,425.3	901.2	644.5	625.3
Samegrelo	1,669.8	646.4	728.8	379.0	1,662.7	495.0	691.7	268.4
Shida Kartli	1,109.1	874.7	690.0	759.4	1,280.4	981.3	808.5	838.2
Kvemo Kartli	1,162.3	194.1	503.7	81.3	1,140.0	198.2	345.9	82.1
Guria	1,545.8	1,348.5	873.3	1,107.8	1,390.9	1,238.8	712.9	1,033.5
Samtskhe-Javakheti	1,459.6	309.3	633.4	126.1	1,623.8	476.1	691.7	321.5
Mtskheta-Mtianeti	868.9	208.1	519.8	185.0	875.3	215.8	438.4	146.5
Racha-Lechkhumi and Kvemo Svaneti	2,646.7	765.7	496.4	275.2	2,101.3	490.5	519.9	167.5
<b>Georgia</b>	<b>1,599.3</b>	<b>752.8</b>	<b>720.2</b>	<b>510.0</b>	<b>1,622.2</b>	<b>765.7</b>	<b>723.9</b>	<b>536.5</b>

Table 3.

Incidence of diseases of the genitourinary system according to some groups of diseases, Georgia, 2001- 2005

	2001	2002	2003	2004	2005
<b>Total number of new cases</b>	<b>25,223</b>	<b>25,000</b>	<b>27,001</b>	<b>31,485</b>	<b>31,644</b>
<i>Incidence rate per 100,000 population</i>	573.1	571.9	623.7	720.2	723.9
<b>Including:</b>					
Nephritis, nephritic syndrome, nephrosis	2,597	2,497	2,176	3,033	2,748
<i>Incidence rate per 100,000 population</i>	59.0	57.1	50.3	69.4	62.9
Renal infections	2,833	3,042	3,053	4,226	4,254
<i>Incidence rate per 100,000 population</i>	64.4	69.6	70.5	96.7	97.3
Renal and urethral calculi	2,312	2,017	2,025	2,784	2,357
<i>Incidence rate per 100,000 population</i>	52.5	46.1	46.8	63.7	53.9
Prostate disorders	1,461	1,359	1,461	1,841	1,655
<i>Incidence rate per 100,000 males</i>	70.4	66.2	71.4	89.3	80.3
Male infertility	308	180	102	227	126
<i>Incidence rate per 100,000 males of fertile age</i>	27.7	16.6	12.9	19.6	10.9
Salpingitis, oophoritis	2,393	2,076	2,078	2,505	2,646
<i>Incidence rate per 100,000 females</i>	102.9	90.6	91.0	108.4	114.6
Endometriosis	472	482	509	557	668
<i>Incidence rate per 100,000 females</i>	20.3	21.0	22.3	24.1	28.9
Cervical erosion and ectropion	2,893	2,385	2,389	2,708	3,477
<i>Incidence rate per 100,000 females</i>	124.4	104.1	104.6	117.2	150.5
Menstrual disorders	1,575	1,977	2,142	2,488	2,276
<i>Incidence rate per 100,000 females of fertile age</i>	134.8	170.4	183.6	214.4	196.1
Female infertility	973	832	945	1,075	970
<i>Incidence rate per 100,000 females of fertile age</i>	82.3	71.7	81.0	92.6	83.6

Table 4.

Incidence of diseases of the genitourinary system in children, according to some groups of diseases, Georgia, 2002 - 2005

	2002	2003	2004	2005
<b>Total number of new cases</b>	<b>3,852</b>	<b>4,073</b>	<b>4,671</b>	<b>4,914</b>
<i>Incidence rate per 100,000 children</i>	420.5	481.7	510.0	536.5
<b>Including:</b>				
Nephritis, nephritic syndrome, nephrosis	302	299	337	268
<i>Incidence rate per 100,000 children</i>	33.0	35.4	36.8	29.3
Renal infections	652	733	1137	1047
<i>Incidence rate per 100,000 children</i>	71.2	86.7	124.1	114.3
Renal and urethral calculi	65	21	93	54
<i>Incidence rate per 100,000 children</i>	7.1	2.5	10.2	5.9

Table 5.

**Diseases of the genitourinary system, hospitalization and case fatality rates according to the regions, Georgia, 2005**

	Total number of hospital discharges		Total number of hospital deaths	
	All ages	In children	All ages	In children
Abkhazia	74	0	1	1.4
Ajara	1,350	239	6	0.4
Tbilisi	4,518	691	56	1.2
Kakheti	709	57	3	0.4
Imereti	1,413	113	10	0.7
Samegrelo	654	36	0	0
Shida Kartli	1,116	97	1	0.1
Kvemo Kartli	743	34	2	0.3
Guria	48	9	0	0
Samtskhe-Javakheti	189	42	0	0
Mtskheta-Mtianeti	96	0	0	0
Racha-Lechkhumi and Kvemo Svaneti	153	29	0	0
Departments other than the MOLHSA	81	0	0	0
<b>Georgia</b>	<b>11,144</b>	<b>1,346</b>	<b>79</b>	<b>0.7</b>

Table 6.

**Diseases of the genitourinary system, hospitalization and case fatality rates according to some groups of diseases, Georgia, 2005**

	Total number of hospital discharges	All ages		In children	
		Total number of hospital deaths	Case fatality rate (%)	Total number of hospital discharges	Under 1 year of age
<b>Diseases of the genitourinary system</b>	<b>11,144</b>	<b>79</b>	<b>0.7</b>	<b>1,347</b>	<b>96</b>
	<b>Including:</b>				
Nephritis, nephrosis	817	4	0.5	192	3
Renal infections	558	1	0.2	162	8
Renal and urethral calculi	529	3	0.6	9	0
Prostate disorders	1,300	10	0.8	23	0

Table 7.

**Diseases of the genitourinary system, surgical activities, Georgia, 2005**

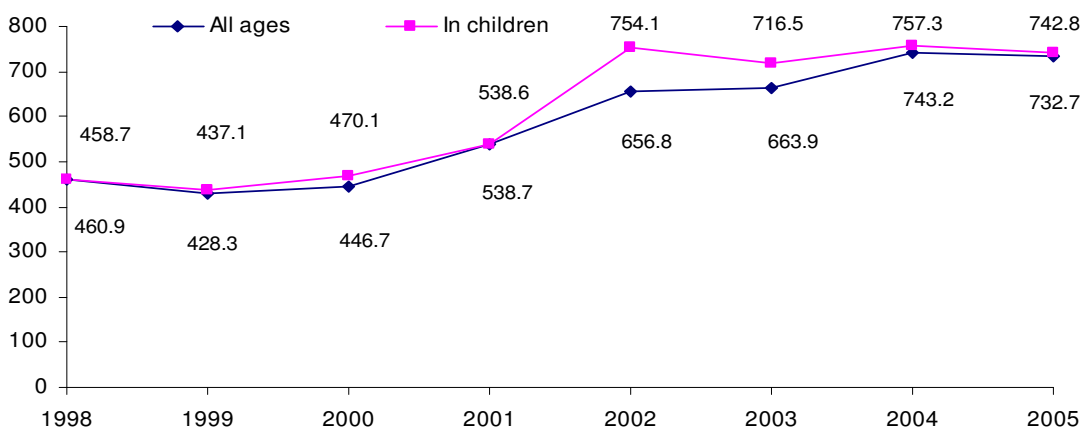
	Total number of surgical operations		Total number of the post operation deaths	Case fatality rate (%)
	All ages	In children		
<b>Operations on the genitourinary system</b>	<b>40,124</b>	<b>532</b>	<b>35</b>	<b>0.1</b>
	<b>Including:</b>			
On kidneys and ureters	1,920	119	19	1.0
On female genital organs	8,593	6	6	0.1
On prostate	1,023	28	3	0.3
Orchectomy	288	31	0	0.0
Obstetrical - gynecological surgery	24,093	0	3	0.01
Other operations on the genitourinary system	3,583	92	2	0.1

Table 8.

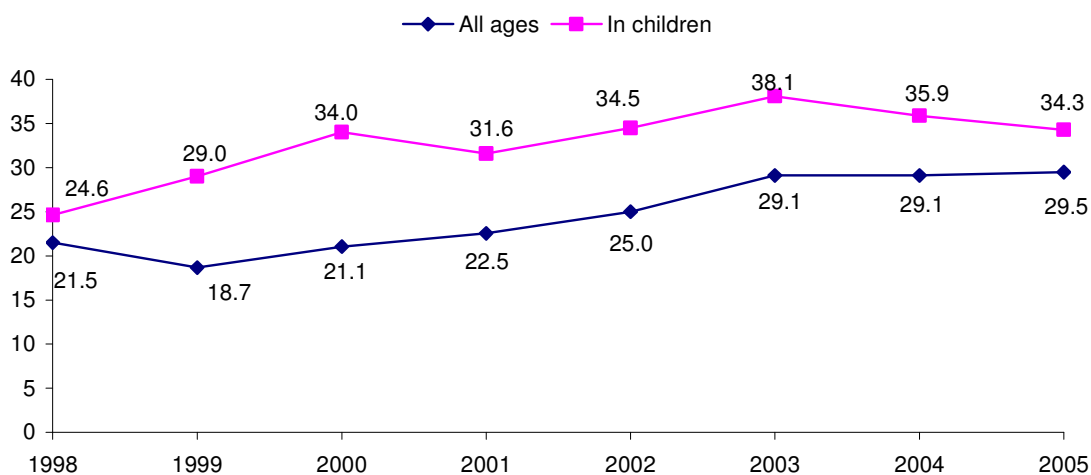
**Surgery on kidneys and ureters, Georgia, 2004 - 2005**

	2004		2005	
	Total number	Case fatality rate (%)	Total number	Case fatality rate (%)
<b>Operations on kidneys and ureter</b>	<b>1,964</b>	<b>1.0</b>	<b>1,920</b>	<b>1.0</b>
	<b>Including</b>			
Kidney transplantation	8	0.0	11	0.0
Resection of kidney	67	0.0	33	0.0
Nephrectomy	306	0.6	330	2.4
On ureters	118	0.8	97	2.1
On bladder	832	0.8	743	0.7
On urethra	192	0.0	192	1.0

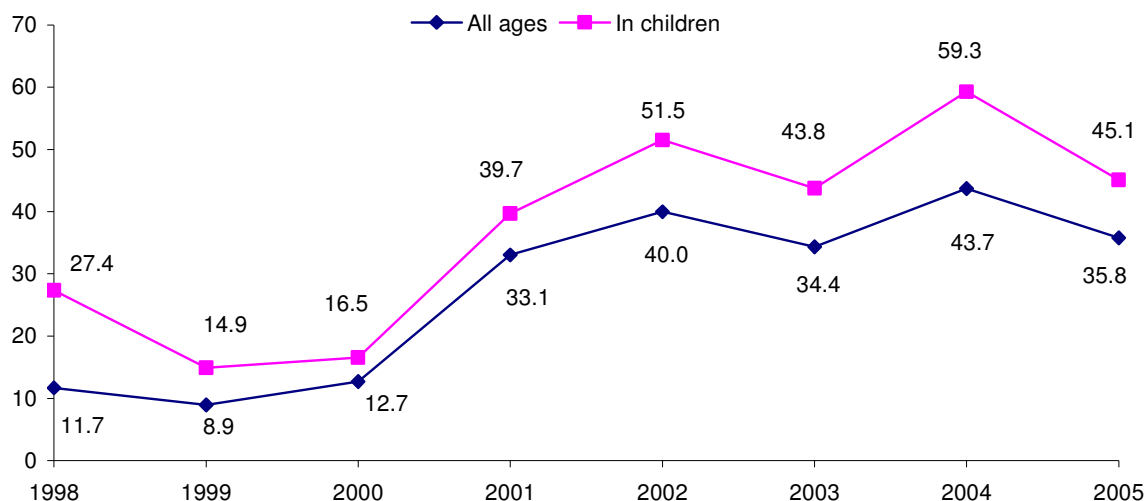
**Injuries, Poisonings and Burns**



**Figure 1. Injuries, poisonings and burns in the whole population and in children, incidence rates per 100,000 population, Georgia, 1998 – 2005**



**Figure 2. Burns in the whole population and in children, incidence rates per 100,000 population, Georgia, 1998 – 2005**



**Figure 3. Poisonings in the whole population and in children, incidence rates per 100,000 population, Georgia, 1998 - 2005**

**Table 1.**  
**Incidence of injuries, poisonings and burns according to some groups of consequences of external causes, Georgia, 2005**

	All ages			In children		
	Total number of new cases	Incidence rate per 100,000 population	Percent from the total number	Total number of new cases	Incidence rate per 100,000 population	Percent from the total number
<b>Injuries, poisonings and burns</b>	<b>32,032</b>	<b>732.7</b>	<b>100</b>	<b>6,804</b>	<b>742.8</b>	<b>100</b>
<b>Including</b>						
Vertebral, cranial fractures, fractures of other bones	445	10.2	1.4	46	5.0	0.7
Bone fractures of upper limbs	2,012	46.0	6.3	348	38.0	5.1
Bone fractures of lower limbs	1,837	42.0	5.7	222	24.2	3.3
Dislocation (without bone fraction), deformation of joints and underlying muscles	3,373	77.2	10.5	682	74.5	10.0
Intracranial traumas without cranial fractures	1,273	29.1	4.0	296	32.3	4.3
Trauma of thoracic, abdominal and pelvic organs	657	15.0	2.0	113	12.3	1.7
Wounds, disturbances of blood vessels, superficial trauma	17,511	400.6	54.7	3,652	398.7	53.7
Traumas of nerves and spinal cord	155	3.5	0.5	38	4.1	0.5
Other traumas	1,916	43.8	6.0	680	74.2	10.0
Burns	1,289	29.5	4.0	314	34.3	4.6
Intoxications with drugs and biologic compounds, toxic action of non-medical compounds and other unclear causes of poisonings with medications, biologic substances, toxic influence of non medical substances and other unknown substances	1,564	35.8	4.9	413	45.1	6.1

**Table 2.**  
**Incidence and prevalence of injuries, poisonings and burns according to the regions, Georgia, 2005**

	Registered cases				New cases			
	All ages		In children		All ages		In children	
	Total number of cases	Prevalence rate per 100,000 population	Total number of cases	Incidence rate per 100,000 population	Total number of cases	Prevalence rate per 100,000 population	Total number of cases	Incidence rate per 100,000 population
Ajara	2,335	621.0	635	706.2	2,090	555.8	561	620.9
Tbilisi	5,213	481.9	1414	671.6	4,112	380.1	1,324	628.9
Kakheti	3,631	891.7	850	1002.1	3,182	781.5	803	946.7
Imereti	4,988	712.9	1170	860.7	4,727	675.6	1,102	810.7
Samegrelo	2,856	612.7	601	645.3	2,602	558.2	482	517.5
Shida Kartli	5,053	1,609.0	713	1041.2	4,811	1,532.0	701	1,023.7
Kvemo Kartli	1,614	324.4	348	288.6	1,519	305.3	337	279.5
Guria	2,451	1,709.7	833	2948.3	2,367	1,651.1	807	2,856.2
Samtskhe-Javakheti	1,922	925.8	279	567.7	1,599	770.2	231	470.0
Mtskheta-Mtianeti	1,104	880.1	102	393.1	981	782.0	89	343.0
Racha-Lechkhumi and Kvemo Svaneti	559	1,096.7	82	981.1	554	1,086.9	80	957.2
Abkhazia	3,304	0	401	0	2,921	0	287	0
Departments other than the MOLHSA	584	0	0	0	567	0	0	0
<b>Georgia</b>	<b>35,614</b>	<b>814.7</b>	<b>7431</b>	<b>811.3</b>	<b>32,032</b>	<b>732.7</b>	<b>6,804</b>	<b>742.8</b>

Table 3.

## Injuries, poisonings and burns, number of hospital discharges and case fatality rate, Georgia, 2003-2005

	2003				2004				2005			
	All ages		In children		All ages		In children		All ages		In children	
	Total number of hospital discharges	Case fatality rate (%)	Total number of hospital discharges	Case fatality rate (%)	Total number of hospital discharges	Case fatality rate (%)	Total number of hospital discharges	Case fatality rate (%)	Total number of hospital discharges	Case fatality rate (%)	Total number of hospital discharges	Case fatality rate (%)
<b>Injuries, poisonings and burns</b>	<b>16,936</b>	<b>3.5</b>	<b>2,494</b>	<b>1.3</b>	<b>18,835</b>	<b>3.2</b>	<b>3,130</b>	<b>0.9</b>	<b>21,247</b>	<b>2.9</b>	<b>4,081</b>	<b>0.5</b>
	<b>Including:</b>											
Fractures	5,072	3.4	580	0.2	5,737	2.4	602	0	5,444	2.3	684	0.4
Burns	649	8.5	234	3.8	625	10.2	249	5.2	596	7.0	218	0.4
Intoxications with drugs, medications and biologic compounds	2,566	1.2	590	0.5	3,060	1.2	647	0.8	3,902	1.2	711	0.3

Table 4.

## Injuries, poisonings and burns, number of hospital discharges and case fatality rate according to the regions, Georgia, 2005

	Total number of hospital discharges	All ages		Total number of hospital discharges	In children	
		Number of hospital deaths	Case fatality rate (%)		Number of hospital deaths	Case fatality rate (%)
					All children	Infants
Ajara	1552	46	3.0	432	4	0.9
Tbilisi	11375	324	2.8	2611	13	0.5
Kakheti	1075	30	2.8	155	0	0.0
Imereti	2622	62	2.4	414	2	0.5
Samegrelo	1591	64	4.0	131	0	0.0
Shida Kartli	948	36	3.8	74	0	0.0
Kvemo Kartli	812	30	3.7	86	1	1.2
Guria	391	9	2.3	73	0	0.0
Samtskhe-Javakheti	388	4	1.0	73	0	0.0
Mtskheta-Mtianeti	179	10	5.6	9	0	0.0
Racha-Lechkhumi and Kvemo Svaneti	145	2	1.4	23	0	0.0
Departments other than the MOLHSA	169	1	0.6	0	0	0.0
<b>Georgia</b>	<b>21247</b>	<b>618</b>	<b>2.9</b>	<b>4081</b>	<b>20</b>	<b>0.5</b>

## SOME HEALTH AND HEALTH CARE INDICATORS ACCORDING TO THE DISTRICTS OF GEORGIA

Table 1.

### Hospital beds: performance indicators, Georgia, 2005

	Total number of hospital beds at the end of the year	Number of hospital beds per 100,000 population	Bed rotation rate	Average length of stay	Bed occupancy rate (days)
<b>Abkhazia</b>	<b>50</b>	<b>--</b>	<b>11.6</b>	<b>5.7</b>	<b>66.2</b>
<b>Ajara</b>	<b>1,508</b>	<b>401.1</b>	<b>18.4</b>	<b>7.1</b>	<b>130.6</b>
Batumi	955	784.0	22.4	7.3	162.7
Keda	100	499.4	8.3	6.3	52.3
Kobuleti	199	226.0	11.8	5.3	62.3
Shuakhevi	90	411.9	9.4	8.7	81.2
Khelvachauri	64	70.5	4.1	7.9	32.1
Khulo	100	299.1	21.9	7.1	155.4
<b>Tbilisi</b>	<b>7,428</b>	<b>686.7</b>	<b>16.2</b>	<b>7.6</b>	<b>124.1</b>
<b>Kakheti</b>	<b>773</b>	<b>189.8</b>	<b>18.3</b>	<b>5.4</b>	<b>99.6</b>
Akhmeta	85	204.1	23.8	6.6	156.8
Gurjaani	185	254.8	13.9	4.7	65.4
Dedoplistskaro	35	113.6	33.3	4.9	163.3
Telavi	168	238.0	21.6	5.1	110.1
Lagodekhi	70	137.1	19.9	6.8	136.3
Sagarejo	100	168.9	15.1	6.1	93.0
Sighnaghi	60	137.7	10.6	5.4	56.8
Kvareli	70	185.9	15.5	3.8	58.2
<b>Imereti</b>	<b>2,389</b>	<b>341.5</b>	<b>15.7</b>	<b>9.6</b>	<b>150.2</b>
Kutaisi	873	469.4	21.0	6.7	140.2
Tkibuli	60	192.7	11.6	5.8	67.9
Tskhaltubo	60	81.2	9.9	4.0	38.9
Chiatura	240	426.0	12.6	7.7	96.5
Bagdadi	60	205.2	8.5	6.3	53.4
Vani	60	174.1	6.5	5.0	32.5
Zestafoni	200	262.4	17.4	6.5	112.7
Terjola	100	219.8	13.2	6.3	82.9
Samtredia	191	315.9	10.4	6.2	64.5
Sachkhere	150	320.2	43.3	7.4	318.7
Kharagauli	55	197.2	4.7	5.7	26.7
Khoni	340	1070.9	3.1	96.1	298.6
<b>Samegrelo</b>	<b>1,234</b>	<b>264.8</b>	<b>12.4</b>	<b>7.2</b>	<b>89.0</b>
Zugdidi	355	211.6	17.6	6.2	108.1
Abasha	75	261.3	13.3	7.9	105.5
Martvili	63	141.2	11.9	6.5	76.5
Senaki	193	370.4	11.0	6.3	69.9
Chkhorotskhu	100	332.0	9.5	7.2	67.9
Tsalenjikha	103	256.7	10.4	6.3	65.0
Khobi	80	194.0	8.4	6.8	57.6
Poti	240	509.0	8.5	11.7	100.6
Mestia	25	175.5	15.9	7.6	119.5

	Total number of hospital beds at the end of the year	Number of hospital beds per 100,000 population	Bed rotation rate	Average length of stay	Bed occupancy rate (days)
<b>Shida Kartli</b>	<b>973</b>	<b>309.8</b>	<b>11.6</b>	<b>7.9</b>	<b>91.9</b>
Gori	401	269.7	16.8	6.5	109.8
Kaspi	62	118.7	12.6	4.7	60.0
Kareli	125	247.9	6.5	6.3	41.2
Khashuri	335	534.2	7.9	13.4	105.8
Tskhinvali	50	--	5.4	4.2	22.3
<b>Kvemo Kartli</b>	<b>1,064</b>	<b>213.9</b>	<b>12.4</b>	<b>6.1</b>	<b>75.7</b>
Rustavi	449	385.8	14.7	5.5	81.1
Bolnisi	60	80.8	29.8	5.8	171.7
Gardabani	105	91.8	10.6	5.0	53.3
Dmanisi	45	160.5	8.7	5.5	48.0
Tetritskaro	50	197.2	11.3	7.3	82.9
Marneuli	220	186.1	11.7	4.6	54.1
Tsalka	135	646.3	1.5	48.4	74.4
<b>Guria</b>	<b>345</b>	<b>240.7</b>	<b>15.1</b>	<b>7.5</b>	<b>113.1</b>
Lanchkhuti	40	98.8	30.0	6.5	196.9
Ozurgeti	250	317.4	12.7	7.9	100.1
Chokhatauri	55	228.3	14.7	7.6	111.3
<b>Samtskhe - Javakheti</b>	<b>655</b>	<b>315.5</b>	<b>12.5</b>	<b>10.8</b>	<b>134.6</b>
Adigeni	210	1012.0	4.6	52.9	240.7
Aspindza	40	307.5	12.7	7.5	94.6
Akhalkalaki	101	165.6	12.2	4.8	57.8
Akhaltzikhe	96	208.1	31.4	3.7	116.2
Borjomi	103	317.7	16.3	6.4	103.4
Ninotsminda	105	306.1	7.7	7.6	58.7
<b>Mtskheta - Mtianeti</b>	<b>176</b>	<b>140.3</b>	<b>16.7</b>	<b>4.5</b>	<b>74.5</b>
Akhalgori	23	298.6	6.5	6.7	43.8
Dusheti	55	163.5	10.1	4.5	45.3
Tianeti	40	285.4	12.7	5.9	73.7
Mtskheta	40	61.7	39.1	3.8	146.9
Kazbegi	18	342.1	8.9	4.8	43.6
<b>Racha – Lechkhumi and Kvemo Svaneti</b>	<b>255</b>	<b>500.3</b>	<b>11.0</b>	<b>7.7</b>	<b>84.1</b>
Ambrolauri	65	404.3	9.5	6.0	56.8
Lentekhi	60	667.3	13.5	10.2	138.1
Oni	75	808.5	8.4	6.9	57.5
Tsageri	55	330.9	13.5	7.0	93.6
<b>Georgia</b>	<b>17,095</b>	<b>391.1</b>	<b>15.2</b>	<b>7.7</b>	<b>118.0</b>

Table 2.

## Health network: performance indicators, Georgia, 2005

	Total number of hospital discharges	Hospitalization level per 100,000 population	Total number of hospital beds per 1 hospital physician	Total number of encounters with the primary health care	Number of encounters per person per year	Total number of encounters per 1 primary health care physician
<b>Abkhazia</b>	<b>579</b>	<b>-</b>	<b>1.0</b>	<b>371,437</b>	<b>-</b>	<b>4.5</b>
<b>Ajara</b>	<b>27,154</b>	<b>7,221.5</b>	<b>2.3</b>	<b>792,691</b>	<b>2.1</b>	<b>3.9</b>
Batumi	20,675	16,973.7	2.0	404,715	3.3	3.2
Keda	834	4,165.0	7.1	35,593	1.8	5.3
Kobuleti	2,355	2,674.2	2.7	145,240	1.6	5.9
Shuakhevi	843	3,858.1	4.1	26,938	1.2	2.7
Khelvachauri	260	286.2	9.1	130,924	1.4	5.1
Khulo	2,187	6,542.0	2.4	49,281	1.5	5.7
<b>Tbilisi</b>	<b>121,642</b>	<b>11,245.7</b>	<b>1.3</b>	<b>3043,255</b>	<b>2.8</b>	<b>2.6</b>
<b>Kakheti</b>	<b>13,604</b>	<b>3,341.0</b>	<b>1.6</b>	<b>689,481</b>	<b>1.7</b>	<b>3.0</b>
Akhmeta	2,026	4,865.4	1.4	79,869	1.9	5.0
Gurjaani	2,155	2,967.6	2.8	109,433	1.5	3.1
Dedoplistskaro	1,167	3,787.6	1.2	77,065	2.5	5.4
Telavi	3,632	5,145.3	1.4	164,801	2.3	2.9
Lagodekhi	1,390	2,722.0	1.8	89,425	1.8	2.4
Sagarejo	1,514	2,556.9	1.4	58,338	1.0	2.6
Sighnaghi	634	1,454.6	1.3	65,354	1.5	3.1
Kvareli	1,086	2,883.9	1.4	45,196	1.2	1.6
<b>Imereti</b>	<b>38,264</b>	<b>5,468.9</b>	<b>2.2</b>	<b>1439,185</b>	<b>2.1</b>	<b>3.7</b>
Kutaisi	18,290	9,835.2	1.6	439,304	2.4	2.4
Tkibuli	695	2,232.4	2.5	49,270	1.6	3.8
Tskhaltubo	592	801.2	1.4	140,325	1.9	6.5
Chiatura	3,027	5,372.6	2.3	95,063	1.7	4.3
Bagdadi	511	1,747.9	1.7	56,342	1.9	4.6
Vani	388	1,125.8	2.7	37,545	1.1	3.7
Zestafoni	3,478	4,563.8	2.2	160,155	2.1	3.9
Terjola	1,317	2,894.8	2.2	79,423	1.7	5.1
Samtredia	1,978	3,271.8	3.0	132,078	2.2	3.4
Sachkhere	6,501	13,877.4	2.4	170,277	3.6	11.5
Kharagauli	258	925.2	3.7	27,040	1.0	3.1
Khoni	1,229	3,871.0	7.7	52,363	1.6	4.3
<b>Samegrelo</b>	<b>15,238</b>	<b>3,269.3</b>	<b>2.0</b>	<b>721,684</b>	<b>1.5</b>	<b>3.4</b>
Zugdidi	6,237	3,717.8	1.3	183,104	1.1	2.4
Abasha	994	3,462.6	1.9	91,359	3.2	5.0
Martvili	748	1,676.1	1.8	82,705	1.9	5.6
Senaki	2,127	4,081.6	3.5	85,705	1.6	3.7
Chkhorotskhu	946	3,140.4	3.3	40,332	1.3	3.1
Tsalenjikha	1,067	2,658.7	3.0	67,506	1.7	4.0
Khobi	674	1,634.3	1.4	57,952	1.4	3.6
Poti	2,048	4,343.7	2.9	78,166	1.7	2.6
Mestia	397	2,786.4	1.9	34,855	2.4	5.0
<b>Shida Kartli</b>	<b>11,240</b>	<b>3,579.2</b>	<b>2.7</b>	<b>561,875</b>	<b>1.8</b>	<b>3.8</b>
Gori	6,734	4,529.0	2.2	245,399	1.7	3.5
Kaspi	781	1,495.7	1.9	34,047	0.7	1.6
Kareli	815	1,616.4	4.2	80,702	1.6	5.4
Khashuri	2,641	4,211.2	3.6	140,650	2.2	4.0
Tskhinvali	269	--	3.3	61,077	-	8.4

	Total number of hospital discharges	Hospitalization level per 100,000 population	Total number of hospital beds per 1 hospital physician	Total number of encounters with the primary health care	Number of encounters per person per year	Total number of encounters per 1 primary health care physician
<b>Kvemo Kartli</b>	<b>13,210</b>	<b>2,655.1</b>	<b>2.4</b>	<b>573,462</b>	<b>1.2</b>	<b>2.8</b>
Rustavi	6,580	5,653.7	2.1	257,888	2.2	3.9
Bolnisi	1,788	2,406.4	1.9	66,138	0.9	2.9
Gardabani	1,110	970.7	2.1	164,763	1.4	3.2
Dmanisi	393	1,401.9	3.0	11,995	0.4	1.5
Tetritskaro	563	2,220.6	1.8	17,368	0.7	1.7
Marneuli	2,569	2,173.1	2.5	47,506	0.4	1.1
Tsalka	207	991.0	7.5	7,804	0.4	1.2
<b>Guria</b>	<b>5,191</b>	<b>3,621.0</b>	<b>2.6</b>	<b>271,547</b>	<b>1.9</b>	<b>4.5</b>
Lanchkhuti	1,200	2,962.5	1.3	66,465	1.6	3.0
Ozurgeti	3,185	4,043.9	3.1	153,684	2.0	5.6
Chokhatauri	806	3,345.8	3.1	51,398	2.1	4.7
<b>Samtskhe - Javakheti</b>	<b>8,195</b>	<b>3,947.5</b>	<b>3.2</b>	<b>402,021</b>	<b>1.9</b>	<b>5.4</b>
Adigeni	956	4,606.8	5.5	42,513	2.0	4.8
Aspindza	509	3,912.4	8.0	25,862	2.0	4.6
Akhalkalaki	1,232	2,020.5	3.5	110,695	1.8	9.4
Akhalsikhe	3,017	6,539.7	1.7	112,901	2.4	4.4
Borjomi	1,674	5,163.2	1.8	78,445	2.4	5.3
Ninotsminda	807	2,352.4	5.8	31,605	0.9	3.7
<b>Mtskheta - Mtianeti</b>	<b>2,937</b>	<b>2,341.3</b>	<b>1.6</b>	<b>140,787</b>	<b>1.1</b>	<b>2.3</b>
Akhalgori	150	1,947.3	2.1	20,114	2.6	3.8
Dusheti	556	1,653.0	1.6	17,255	0.5	1.1
Tianeti	506	3,610.7	2.7	19,178	1.4	1.9
Mtskheta	1,564	2,412.5	0.9	74,401	1.1	2.8
Kazbegi	161	3,060.3	3.0	9,839	1.9	1.9
<b>Racha - Lechkumi and Kvemo Svaneti</b>	<b>2,798</b>	<b>5,489.6</b>	<b>3.5</b>	<b>70,071</b>	<b>1.4</b>	<b>2.1</b>
Ambrolauri	618	3,843.5	3.1	20,523	1.3	2.2
Lentekhi	811	9,020.1	4.3	9,980	1.1	1.7
Oni	628	6,769.4	5.4	13,581	1.5	1.6
Tsageri	741	4,458.0	2.4	25,987	1.6	2.7
<b>Georgia</b>	<b>261,214</b>	<b>5,975.3</b>	<b>1.7</b>	<b>9172,044</b>	<b>2.1</b>	<b>3.2</b>

**Table 3.**

**Medical personnel: performance indicators, Georgia, 2005**

	Total number of physicians (physical persons)	Total number of physicians per 100,000 population	Total number of the medium-level medical staff	Total number of the medium-level medical staff per 100,000 population	Nurses to physicians ratio
<b>Abkhazia</b>	<b>382</b>	<b>-</b>	<b>358</b>	<b>-</b>	<b>0.9</b>
<b>Ajara</b>	<b>1,123</b>	<b>298.7</b>	<b>2,085</b>	<b>554.5</b>	<b>1.9</b>
Batumi	780	640.4	1203	987.6	1.5
Keda	33	164.8	108	539.4	3.3
Kobuleti	138	156.7	326	370.2	2.4
Shuakhevi	19	87.0	107	489.7	5.6
Khelvachauri	91	100.2	194	213.6	2.1
Khulo	62	185.5	147	439.7	2.4
<b>Tbilisi</b>	<b>9,149</b>	<b>845.8</b>	<b>7,656</b>	<b>707.8</b>	<b>0.8</b>
<b>Kakheti</b>	<b>1,267</b>	<b>311.2</b>	<b>1,174</b>	<b>288.3</b>	<b>0.9</b>
Akhmeta	113	271.4	115	276.2	1.0
Gurjaani	190	261.6	172	236.9	0.9
Dedoplistskaro	76	246.7	69	223.9	0.9
Telavi	315	446.2	241	341.4	0.8
Lagodekhi	173	338.8	196	383.8	1.1
Sagarejo	141	238.1	134	226.3	1.0
Sighnaghi	113	259.3	107	245.5	0.9
Kvareli	146	387.7	140	371.8	1.0
<b>Imereti</b>	<b>2,294</b>	<b>327.9</b>	<b>2,832</b>	<b>404.8</b>	<b>1.2</b>
Kutaisi	1,090	586.1	1,092	587.2	1.0
Tkibuli	61	195.9	82	263.4	1.3
Tskhaltubo	104	140.8	128	173.2	1.2
Chiatura	159	282.2	252	447.3	1.6
Bagdadi	69	236.0	104	355.7	1.5
Vani	57	165.4	66	191.5	1.2
Zestafoni	215	282.1	242	317.6	1.1
Terjola	90	197.8	119	261.6	1.3
Samtredia	202	334.1	276	456.5	1.4
Sachkhere	117	249.8	234	499.5	2.0
Kharagauli	43	154.2	61	218.8	1.4
Khoni	87	274.0	176	554.3	2.0
<b>Samegrelo</b>	<b>1,297</b>	<b>278.3</b>	<b>1,693</b>	<b>363.2</b>	<b>1.3</b>
Zugdidi	508	302.8	622	370.8	1.2
Abasha	109	379.7	118	411.0	1.1
Martvili	82	183.7	124	277.9	1.5
Senaki	135	259.1	170	326.2	1.3
Chkhorotskhu	76	252.3	107	355.2	1.4
Tsalenjikha	93	231.7	149	371.3	1.6
Khobi	96	232.8	138	334.6	1.4
Poti	168	356.3	194	411.5	1.2
Mestia	30	210.6	71	498.3	2.4
<b>Shida Kartli</b>	<b>842</b>	<b>268.1</b>	<b>1,123</b>	<b>357.6</b>	<b>1.3</b>
Gori	419	281.8	517	347.7	1.2
Kaspi	102	195.3	125	239.4	1.2
Kareli	79	156.7	102	202.3	1.3
Khashuri	200	318.9	285	454.4	1.4
Tskhinvali	42	-0	94	-	2.2

	Total number of physicians (physical persons)	Total number of physicians per 100,000 population	Total number of the medium-level medical staff	Total number of the medium-level medical staff per 100,000 population	Nurses to physicians ratio
<b>Kvemo Kartli</b>	<b>1,112</b>	<b>223.5</b>	<b>1,373</b>	<b>276.0</b>	<b>1.2</b>
Rustavi	443	380.6	508	436.5	1.1
Bolnisi	99	133.2	158	212.6	1.6
Gardabani	239	209.0	176	153.9	0.7
Dmanisi	30	107.0	33	117.7	1.1
Tetritskaro	51	201.2	64	252.4	1.3
Marneuli	208	175.9	371	313.8	1.8
Tsalka	42	201.1	63	301.6	1.5
<b>Guria</b>	<b>324</b>	<b>226.0</b>	<b>482</b>	<b>336.2</b>	<b>1.5</b>
Lanchkhuti	94	232.1	118	291.3	1.3
Ozurgeti	177	224.7	253	321.2	1.4
Chokhatauri	53	220.0	111	460.8	2.1
<b>Samtskhe - Javakheti</b>	<b>385</b>	<b>185.5</b>	<b>722</b>	<b>347.8</b>	<b>1.9</b>
Adigeni	39	187.9	86	414.4	2.2
Aspindza	25	192.2	43	330.5	1.7
Akhalkalaki	64	105.0	96	157.4	1.5
Akhaltzikhe	129	279.6	192	416.2	1.5
Borjomi	102	314.6	179	552.1	1.8
Ninotsminda	26	75.8	126	367.3	4.8
<b>Mtskheta - Mtianeti</b>	<b>309</b>	<b>246.3</b>	<b>356</b>	<b>283.8</b>	<b>1.2</b>
Akhalgori	26	337.5	47	610.2	1.8
Dusheti	85	252.7	91	270.5	1.1
Tianeti	43	306.8	61	435.3	1.4
Mtskheta	134	206.7	141	217.5	1.1
Kazbegi	21	399.2	16	304.1	0.8
<b>Racha - Lechkhumi and Kvemo Svaneti</b>	<b>164</b>	<b>321.8</b>	<b>285</b>	<b>559.2</b>	<b>1.7</b>
Ambrolauri	54	335.8	77	478.9	1.4
Lentekhi	25	278.1	76	845.3	3.0
Oni	33	355.7	56	603.6	1.7
Tsageri	52	312.8	76	457.2	1.5
<b>Georgia</b>	<b>18,832</b>	<b>430.8</b>	<b>20,323</b>	<b>464.9</b>	<b>1.1</b>

Table 4.

**General incidence according to the primary health care reports, Georgia, 2005**

	Total number of new cases, all ages	Incidence rate per 100,000 population	Change compared with 2004 (%)	Total number of new cases in children	Incidence rate per 100,000 children	Change compared with 2004 (%)
<b>Abkhazia</b>	<b>65,264</b>	--	<b>21.6</b>	<b>19,316</b>	--	<b>4.9</b>
<b>Ajara</b>	<b>42,183</b>	<b>11,218.4</b>	<b>21.3</b>	<b>16,289</b>	<b>18,029.0</b>	<b>89.9</b>
Batumi	24,757	20,324.9	68.2	11,241	43,585.0	290.4
Keda	745	3,720.5	25.6	123	2,412.2	29.5
Kobuleti	2,215	2,515.2	-42.3	835	4,134.1	-39.4
Shuakhevi	1,879	8,599.5	-46.2	710	11,284.2	-44.9
Khelvachauri	8,764	9,647.4	20.0	2,341	10,266.2	9.6
Khulo	3,823	11,435.8	-21.1	1,039	10,220.3	29.4
<b>Tbilisi</b>	<b>280,631</b>	<b>25,944.0</b>	<b>24.0</b>	<b>124,157</b>	<b>58,971.0</b>	<b>7.9</b>
<b>Kakheti</b>	<b>45,695</b>	<b>11,222.3</b>	<b>7.8</b>	<b>16,648</b>	<b>19,627.2</b>	<b>16.7</b>
Akhmeta	816	1,959.6	119.4	27	278.5	-48.1
Gurjaani	6,166	8,491.0	1.8	2,160	16,392.2	0.2
Dedoplistskaro	3,863	12,537.7	6.4	924	14,457.8	-9.0
Telavi	14,986	21,229.9	21.6	7,206	50,003.5	57.6
Lagodekhi	3,207	6,280.1	-4.4	1,202	9,938.8	-3.8
Sagarejo	3,785	6,392.3	29.0	701	5,257.6	35.6
Sighnaghi	7,215	16,553.1	3.6	3,383	43,455.4	9.8
Kvareli	5,657	15,022.0	-16.2	1,045	13,167.8	-35.5
<b>Imereti</b>	<b>70,214</b>	<b>10,035.4</b>	<b>0.7</b>	<b>19,210</b>	<b>14,132.0</b>	<b>7.4</b>
Kutaisi	18,305	9,843.3	0.0	2,093	5,839.7	-1.1
Tkibuli	1,619	5,200.4	136.7	106	1,919.2	12.8
Tskhaltubo	3,076	4,163.0	-6.0	910	6,428.8	17.1
Chiatura	16,236	28,817.4	10.1	5,997	51,260.8	10.5
Bagdadi	4,778	16,343.4	-1.2	1,044	18,560.0	3.9
Vani	773	2,242.9	-41.5	101	1,577.1	-37.7
Zestafoni	7,167	9,404.5	2.6	4,217	27,747.1	-1.5
Terjola	5,642	12,401.1	-15.2	1,486	16,798.6	-8.9
Samtredia	3,227	5,337.8	5.0	531	4,663.6	-5.7
Sachkhere	2,304	4,918.2	-32.7	530	5,492.8	-8.6
Kharagauli	4,094	14,681.7	47.1	1,783	32,530.6	203.2
Khoni	2,993	9,427.1	-18.5	412	6,725.4	-38.4
<b>Samegrelo</b>	<b>42,370</b>	<b>9,090.3</b>	<b>-2.4</b>	<b>9,312</b>	<b>9,998.3</b>	<b>-13.2</b>
Zugdidi	13,617	8,117.0	-4.0	3,626	10,730.4	-2.2
Abasha	530	1,846.2	-22.9	75	1,371.1	-69.3
Martvili	4,014	8,994.6	-17.3	587	6,812.9	-43.4
Senaki	7,685	14,747.1	3.6	1,470	14,596.4	-0.3
Chkhorotskhu	1,023	3,396.0	12.5	138	2,305.8	94.4
Tsalenjikha	4,281	10,667.0	2.2	468	5,798.5	-7.9
Khobi	3,877	9,401.1	33.3	446	5,475.1	-7.1
Poti	5,615	11,909.1	24.6	1,974	20,971.0	-7.6
Mestia	1,728	12,128.0	-53.8	528	14,781.6	-50.6
<b>Shida Kartli</b>	<b>53,631</b>	<b>17,077.8</b>	<b>12.9</b>	<b>23,839</b>	<b>34,812.6</b>	<b>-0.4</b>
Gori	32,011	21,529.3	1.5	15,617	47,941.7	-7.9
Kaspi	4,743	9,083.2	41.5	1,136	10,628.7	-15.5
Kareli	913	1,810.7	42.2	213	1,842.1	4.9
Khashuri	11,596	18,490.3	56.8	6,240	45,707.6	36.4
Tskhinvali	4,368	--	-5.0	633	--	-24.7

	Total number of new cases, all ages	Incidence rate per 100,000 population	Change compared with 2004 (%)	Total number of new cases in children	Incidence rate per 100,000 children	Change compared with 2004 (%)
<b>Kvemo Kartli</b>	<b>27,540</b>	<b>5,535.3</b>	<b>-4.6</b>	<b>10,467</b>	<b>8,681.6</b>	<b>9.3</b>
Rustavi	8,787	7,550.0	7.7	5,976	22,576.5	17.7
Bolnisi	1,991	2,679.6	-38.3	623	3,552.9	1.0
Gardabani	10,306	9,012.8	-4.4	2,594	9,320.2	5.9
Dmanisi	1,478	5,272.2	10.7	242	3,378.0	-49.7
Tetritskaro	2,105	8,302.4	11.7	170	3,369.0	-1.7
Marneuli	1,857	1,570.8	-14.1	636	1,978.7	5.0
Tsalka	1,016	4,864.0	-23.7	226	5,163.4	28.4
<b>Guria</b>	<b>24,412</b>	<b>17,028.8</b>	<b>2.4</b>	<b>10,195</b>	<b>36,083.4</b>	<b>7.8</b>
Lanchkhuti	6,282	15,508.4	5.1	1,537	19,243.8	31.7
Ozurgeti	16,433	20,864.7	0.8	8,052	51,928.3	2.7
Chokhatauri	1,697	7,044.4	8.4	606	12,728.4	33.5
<b>Samtskhe - Javakheti</b>	<b>18,907</b>	<b>9,107.5</b>	<b>19.1</b>	<b>3,544</b>	<b>7,210.6</b>	<b>20.0</b>
Adigeni	1,471	7,088.5	-15.6	281	5,352.4	-0.4
Aspindza	1,005	7,724.8	10.6	221	6,608.9	44.4
Akhalkalaki	9,112	14,943.8	32.3	2,275	14,978.9	30.1
Akhaltzikhe	5,872	12,728.1	22.3	465	4,585.8	-12.4
Borjomi	1,315	4,055.9	-4.6	302	4,412.6	26.9
Ninotsminda	132	384.8	-12.6	0	0	0.0
<b>Mtskheta - Mtianeti</b>	<b>14,804</b>	<b>11,801.4</b>	<b>0.2</b>	<b>4,264</b>	<b>16,434.8</b>	<b>17.4</b>
Akhalgori	1,363	17,694.4	5.4	384	23,806.6	-15.4
Dusheti	4,947	14,707.5	-9.3	1,378	20,125.6	-2.1
Tianeti	2,414	17,225.6	20.8	738	28,319.3	29.9
Mtskheta	5,484	8,459.2	0.1	1,672	12,086.2	53.0
Kazbegi	596	11,328.6	8.4	92	8,803.8	-16.4
<b>Racha - Lechkhumi and Kvemo Svaneti</b>	<b>6,213</b>	<b>12,189.8</b>	<b>6.2</b>	<b>1,068</b>	<b>12,778.2</b>	<b>-7.9</b>
Ambrolauri	2,665	16,574.4	14.6	179	7,669.2	-44.1
Lentekhi	1,893	21,054.4	28.8	570	29,579.7	29.5
Oni	795	8,569.6	-18.8	139	10,138.6	-30.5
Tsageri	860	5,173.9	-20.1	180	6,603.1	-9.5
<b>Georgia</b>	<b>695,187</b>	<b>15,902.6</b>	<b>11.9</b>	<b>258,309</b>	<b>28,201.4</b>	<b>8.8</b>

Table 5.

**Incidence of enlargements of the thyroid gland and unspecified goitre according to the primary health care reports, Georgia, 2004-2005**

	2004				2005			
	Total number of new cases		Incidence rate		Total number of new cases		Incidence rate	
	All ages	In children	per 100,000 population	per 100,000 children	All ages	In children	per 100,000 population	per 100,000 children
<b>Abkhazia</b>	<b>1,517</b>	<b>161</b>	-	-	<b>385</b>	<b>127</b>	-	-
<b>Ajara</b>	<b>1,417</b>	<b>128</b>	<b>376.8</b>	<b>141.7</b>	<b>955</b>	<b>118</b>	<b>254.0</b>	<b>130.6</b>
Batumi	840	16	689.6	62.0	583	6	478.6	23.3
Keda	22	7	109.9	137.3	69	22	344.6	431.5
Kobuleti	94	36	106.7	178.2	82	25	93.1	123.8
Shuakhevi	14	10	64.1	158.9	44	14	201.4	222.5
Khelvachauri	134	35	147.5	153.5	113	31	124.4	135.9
Khulo	313	24	936.3	236.1	64	20	191.4	196.7
<b>Tbilisi</b>	<b>63</b>	<b>19</b>	<b>5.8</b>	<b>9.0</b>	<b>1,670</b>	<b>109</b>	<b>154.4</b>	<b>51.8</b>
<b>Kakheti</b>	<b>2,515</b>	<b>1,147</b>	<b>617.7</b>	<b>1,352.3</b>	<b>2,793</b>	<b>2,061</b>	<b>685.9</b>	<b>2,429.8</b>
Akhmeta	41	9	98.5	92.8	464	5	1,114.3	51.6
Gurjaani	40	19	55.1	144.2	8	3	11.0	22.8
Dedoplistskaro	60	14	194.7	219.1	22	1	71.4	15.6
Telavi	1,312	708	1,858.6	4,912.9	1,965	1,894	2,783.7	1,3142.7
Lagodekhi	25	12	49.0	99.2	40	21	78.3	173.6
Sagarejo	207	78	349.6	585.0	256	121	432.3	907.5
Sighnaghi	48	33	110.1	423.9	25	3	57.4	38.5
Kvareli	782	274	2,076.6	3,452.6	13	13	34.5	163.8
<b>Imereti</b>	<b>2,276</b>	<b>362</b>	<b>325.3</b>	<b>266.3</b>	<b>3,947</b>	<b>1,602</b>	<b>564.1</b>	<b>1,178.5</b>
Kutaisi	504	36	271.0	100.4	841	66	452.2	184.1
Tkibuli	14	2	45.0	36.2	61	11	195.9	199.2
Tskhaltubo	4	0	5.4	0.0	1	0	1.4	0.0
Chiatura	558	151	990.4	1,290.7	265	118	470.4	1,008.6
Bagdadi	171	0	584.9	0.0	649	16	2,219.9	284.4
Vani	54	9	156.7	140.5	39	7	113.2	109.3
Zestafoni	138	24	181.1	157.9	224	33	293.9	217.1
Terjola	176	65	386.8	734.8	128	56	281.3	633.1
Samtredia	100	13	165.4	114.2	191	47	315.9	412.8
Sachkhere	429	35	915.8	362.7	185	19	394.9	196.9
Kharagauli	61	14	218.8	255.4	1,327	1,218	4,758.8	22,222.2
Khoni	67	13	211.0	212.2	36	11	113.4	179.6
<b>Samegrelo</b>	<b>1,454</b>	<b>567</b>	<b>312.0</b>	<b>608.8</b>	<b>974</b>	<b>410</b>	<b>209.0</b>	<b>440.2</b>
Zugdidi	161	11	96.0	32.6	150	67	89.4	198.3
Abasha	121	121	421.5	2,212.1	62	0	216.0	0.0
Martvili	162	7	363.0	81.2	210	7	470.6	81.2
Senaki	17	0	32.6	0.0	2	0	3.8	0.0
Chkhorotskhu	18	8	59.8	133.7	23	7	76.4	117.0
Tsalenjikha	203	23	505.8	285.0	13	4	32.4	49.6
Khobi	79	9	191.6	110.5	104	9	252.2	110.5
Poti	404	309	856.9	3,282.7	370	297	784.7	3,155.2
Mestia	289	79	2,028.4	2,211.6	40	19	280.7	531.9

	2004				2005			
	Total number of new cases		Incidence rate		Total number of new cases		Incidence rate	
	All ages	In children	per 100,000 population	per 100,000 children	All ages	In children	per 100,000 population	per 100,000 children
<b>Shida Kartli</b>	<b>1,345</b>	<b>1,082</b>	<b>428.3</b>	<b>1,580.1</b>	<b>1,064</b>	<b>689</b>	<b>338.8</b>	<b>1,006.2</b>
Gori	1,160	1,017	780.2	3,122.0	806	630	542.1	1,934.0
Kaspi	10	2	19.2	18.7	43	21	82.3	196.5
Kareli	103	56	204.3	484.3	76	10	150.7	86.5
Khashuri	15	5	23.9	36.6	52	10	82.9	73.2
Tskhinvali	57	2	0	0	87	18	-	-
<b>Kvemo Kartli</b>	<b>747</b>	<b>44</b>	<b>150.1</b>	<b>36.5</b>	<b>354</b>	<b>31</b>	<b>71.2</b>	<b>25.7</b>
Rustavi	100	15	85.9	56.7	25	12	21.5	45.3
Bolnisi	178	0	239.6	0.0	207	0	278.6	0.0
Gardabani	301	9	263.2	32.3	97	10	84.8	35.9
Dmanisi	87	10	310.3	139.6	18	8	64.2	111.7
Tetritskaro	53	10	209.0	198.2	0	0	0.0	0.0
Marneuli	27	0	22.8	0.0	3	0	2.5	0.0
Tsalka	1	0	4.8	0.0	4	1	19.1	22.8
<b>Guria</b>	<b>165</b>	<b>36</b>	<b>115.1</b>	<b>127.4</b>	<b>171</b>	<b>43</b>	<b>119.3</b>	<b>152.2</b>
Lanchkhuti	17	0	42.0	0.0	33	4	81.5	50.1
Ozurgeti	77	12	97.8	77.4	86	24	109.2	154.8
Chokhatauri	71	24	294.7	504.1	52	15	215.9	315.1
<b>Samtskhe - Javakheti</b>	<b>707</b>	<b>331</b>	<b>340.6</b>	<b>673.4</b>	<b>497</b>	<b>190</b>	<b>239.4</b>	<b>386.6</b>
Adigeni	64	22	308.4	419.0	69	16	332.5	304.8
Aspindza	64	27	491.9	807.4	52	44	399.7	1,315.8
Akhalkalaki	199	20	326.4	131.7	248	117	406.7	770.3
Akhaltzikhe	313	237	678.5	2,337.3	117	12	253.6	118.3
Borjomi	67	25	206.6	365.3	11	1	33.9	14.6
Ninotsminda	0	0	0.0	0.0	0	0	0.0	0.0
<b>Mtskheta - Mtianeti</b>	<b>558</b>	<b>151</b>	<b>444.8</b>	<b>582.0</b>	<b>496</b>	<b>139</b>	<b>395.4</b>	<b>535.7</b>
Akhalgori	53	36	688.0	2,231.9	31	18	402.4	1,115.9
Dusheti	59	36	175.4	525.8	201	74	597.6	1,080.8
Tianeti	70	43	499.5	1,650.0	38	13	271.2	498.8
Mtskheta	362	26	558.4	187.9	212	26	327.0	187.9
Kazbegi	14	10	266.1	956.9	14	8	266.1	765.6
<b>Racha - Lechkhumi and Kvemo Svaneti</b>	<b>581</b>	<b>134</b>	<b>1,139.9</b>	<b>1,603.3</b>	<b>281</b>	<b>85</b>	<b>551.3</b>	<b>1,017.0</b>
Ambrolauri	292	69	1,816.0	2,956.3	125	13	777.4	557.0
Lentekhi	31	4	344.8	207.6	12	0	133.5	0.0
Oni	82	0	883.9	0.0	0	0	0.0	0.0
Tsageri	176	61	1,058.8	2,237.7	144	72	866.3	2641.2
<b>Georgia</b>	<b>13,597</b>	<b>4,276</b>	<b>311.0</b>	<b>466.8</b>	<b>13,603</b>	<b>5604</b>	<b>311.2</b>	<b>611.8</b>

Table 6.

## Incidence of diabetes mellitus according to the primary health care reports, Georgia, 2004 - 2005

	2004				2005			
	Total number of new cases		Incidence rate		Total number of new cases		Incidence rate	
	All ages	In children	per 100,000 population	per 100,000 children	All ages	In children	per 100,000 population	per 100,000 children
<b>Abkhazia</b>	<b>264</b>	<b>2</b>	-	-	<b>240</b>	<b>2</b>	-	-
<b>Ajara</b>	<b>342</b>	<b>1</b>	<b>91.0</b>	<b>1.1</b>	<b>313</b>	<b>13</b>	<b>83.2</b>	<b>14.4</b>
Batumi	181	1	148.6	3.9	156	2	128.1	7.8
Keda	10	0	49.9	0.0	6	1	30.0	19.6
Kobuleti	73	0	82.9	0.0	54	1	61.3	5.0
Shuakhevi	14	0	64.1	0.0	14	5	64.1	79.5
Khelvachauri	46	0	50.6	0.0	66	3	72.7	13.2
Khulo	18	0	53.8	0.0	17	1	50.9	9.8
<b>Tbilisi</b>	<b>553</b>	<b>6</b>	<b>51.1</b>	<b>2.8</b>	<b>487</b>	<b>14</b>	<b>45.0</b>	<b>6.6</b>
<b>Kakheti</b>	<b>215</b>	<b>5</b>	<b>52.8</b>	<b>5.9</b>	<b>335</b>	<b>5</b>	<b>82.3</b>	<b>5.9</b>
Akhmeta	8	1	19.2	10.3	20	2	48.0	20.6
Gurjaani	25	0	34.4	0.0	22	1	30.3	7.6
Dedoplistskaro	15	1	48.7	15.6	16	0	51.9	0.0
Telavi	75	0	106.2	0.0	123	1	174.2	6.9
Lagodekhi	22	0	43.1	0.0	39	1	76.4	8.3
Sagarejo	20	1	33.8	7.5	58	0	98.0	0.0
Sighnaghi	25	1	57.4	12.8	38	0	87.2	0.0
Kvareli	25	1	66.4	12.6	19	0	50.5	0.0
<b>Imereti</b>	<b>319</b>	<b>8</b>	<b>45.6</b>	<b>5.9</b>	<b>391</b>	<b>18</b>	<b>55.9</b>	<b>13.2</b>
Kutaisi	34	2	18.3	5.6	105	6	56.5	16.7
Tkibuli	9	0	28.9	0.0	8	1	25.7	18.1
Tskhaltubo	12	0	16.2	0.0	10	3	13.5	21.2
Chiatura	23	1	40.8	8.5	39	2	69.2	0.0
Bagdadi	44	0	150.5	0.0	48	0	164.2	0.0
Vani	39	0	113.2	0.0	10	0	29.0	0.0
Zestafoni	40	0	52.5	0.0	31	2	40.7	13.2
Terjola	22	1	48.4	11.3	13	1	28.6	11.3
Samtredia	31	2	51.3	17.6	36	0	59.5	0.0
Sachkhere	30	0	64.0	0.0	55	2	117.4	20.7
Kharagauli	10	0	35.9	0.0	18	0	64.6	0.0
Khoni	25	2	78.7	32.6	18	1	56.7	16.3
<b>Samegrelo</b>	<b>100</b>	<b>4</b>	<b>21.5</b>	<b>4.3</b>	<b>171</b>	<b>4</b>	<b>36.7</b>	<b>4.3</b>
Zugdidi	18	0	10.7	0.0	40	0	23.8	0.0
Abasha	6	0	20.9	0.0	12	0	41.8	0.0
Martvili	15	1	33.6	11.6	21	0	47.1	0.0
Senaki	6	0	11.5	0.0	2	0	3.8	0.0
Chkhorotskhu	2	1	6.6	16.7	5	1	16.6	16.7
Tsalenjikha	16	1	39.9	12.4	36	1	89.7	12.4
Khobi	4	0	9.7	0.0	27	0	65.5	0.0
Poti	31	0	65.7	0.0	22	1	46.7	10.6
Mestia	2	1	14.0	28.0	6	1	42.1	28.0

	2004				2005			
	Total number of new cases		Incidence rate		Total number of new cases		Incidence rate	
	All ages	In children	per 100,000 population	per 100,000 children	All ages	In children	per 100,000 population	per 100,000 children
<b>Shida Kartli</b>	<b>148</b>	<b>5</b>	<b>47.1</b>	<b>7.3</b>	<b>163</b>	<b>1</b>	<b>51.9</b>	<b>1.5</b>
Gori	115	4	77.3	12.3	103	0	69.3	0.0
Kaspi	5	0	9.6	0.0	7	0	13.4	0.0
Kareli	13	0	25.8	0.0	16	1	31.7	8.6
Khashuri	12	1	19.1	7.3	35	0	55.8	0.0
Tskhinvali	3	0	-0	-0	2	0	-	-
<b>Kvemo Kartli</b>	<b>202</b>	<b>3</b>	<b>40.6</b>	<b>2.5</b>	<b>261</b>	<b>4</b>	<b>52.5</b>	<b>3.3</b>
Rustavi	59	0	50.7	0.0	45	0	38.7	0.0
Bolnisi	13	1	17.5	5.7	16	1	21.5	5.7
Gardabani	68	0	59.5	0.0	108	2	94.4	7.2
Dmanisi	3	0	10.7	0.0	3	0	10.7	0.0
Tetritskaro	18	0	71.0	0.0	13	0	51.3	0.0
Marneuli	38	2	32.1	6.2	70	1	59.2	3.1
Tsalka	3	0	14.4	0.0	6	0	28.7	0.0
<b>Guria</b>	<b>40</b>	<b>2</b>	<b>27.9</b>	<b>7.1</b>	<b>79</b>	<b>1</b>	<b>55.1</b>	<b>3.5</b>
Lanchkhuti	18	0	44.4	12.5	25	0	61.7	0.0
Ozurgeti	18	1	22.9	6.4	44	1	55.9	6.4
Chokhatauri	4	00	16.6	0.0	10	0	41.5	0.0
<b>Samtskhe - Javakheti</b>	<b>79</b>	<b>2</b>	<b>38.1</b>	<b>4.1</b>	<b>237</b>	<b>20</b>	<b>114.2</b>	<b>40.7</b>
Adigeni	21	0	101.2	0.0	6	0	28.9	0.0
Aspindza	0	0	0.0	0.0	7	2	53.8	59.8
Akhalkalaki	10	0	16.4	0.0	101	13	165.6	85.6
Akhaltzikhe	35	0	75.9	0.0	111	5	240.6	49.3
Borjomi	8	2	24.7	29.2	5	0	15.4	0.0
Ninotsminda	5	0	14.6	0.0	7	0	20.4	0.0
<b>Mtskheta - Mtianeti</b>	<b>72</b>	<b>0</b>	<b>57.4</b>	<b>0.0</b>	<b>67</b>	<b>0</b>	<b>53.4</b>	<b>0.0</b>
Akhalgori	0	0	0.0	0.0	3	0	38.9	0.0
Dusheti	23	0	68.4	0.0	11	0	32.7	0.0
Tianeti	4	0	28.5	0.0	6	0	42.8	0.0
Mtskheta	45	0	69.4	0.0	47	0	72.5	0.0
Kazbegi	0	0	0.0	0.0	0	0	0.0	0.0
<b>Racha - Lechkhumi and Kvemo Svaneti</b>	<b>25</b>	<b>1</b>	<b>49.0</b>	<b>12.0</b>	<b>69</b>	<b>0</b>	<b>135.4</b>	<b>0.0</b>
Ambrolauri	3	0	18.7	0.0	54	0	335.8	0.0
Lentekhi	0	0	0.0	0.0	1	0	11.1	0.0
Oni	7	0	75.5	0.0	6	0	64.7	0.0
Tsageri	15	1	90.2	36.7	8	0	48.1	0.0
<b>Georgia</b>	<b>2,418</b>	<b>39</b>	<b>55.3</b>	<b>4.3</b>	<b>2,830</b>	<b>82</b>	<b>64.7</b>	<b>9.0</b>

Table 7.

## Ambulance: performance indicators, Georgia, 2005

	2004				2005			
	Total number of calls to patients of all ages	to children	Number of calls per person	per child	Total number of calls to patients of all ages	to children	per person	per child
<b>Ajara</b>	<b>32,430</b>	<b>2,608</b>	<b>0.09</b>	<b>0.03</b>	<b>48,684</b>	<b>2,918</b>	<b>0.13</b>	<b>0.03</b>
Batumi	21,059	923	0.17	0.04	30,265	1,400	0.25	0.05
Keda	1,203	74	0.06	0.01	2,381	193	0.12	0.04
Kobuleti	3,619	333	0.04	0.02	6,136	532	0.07	0.03
Shuakhevi	520	0	0.02	0.00	1,490	166	0.07	0.03
Khelvachauri	5,386	1,052	0.06	0.05	6,072	374	0.07	0.02
Khulo	643	226	0.02	0.02	2,340	253	0.07	0.02
<b>Tbilisi</b>	<b>93,225</b>	<b>12,143</b>	<b>0.09</b>	<b>0.06</b>	<b>191,418</b>	<b>17,274</b>	<b>0.18</b>	<b>0.08</b>
<b>Kakheti</b>	<b>10,413</b>	<b>1,253</b>	<b>0.03</b>	<b>0.01</b>	<b>23,371</b>	<b>1,097</b>	<b>0.06</b>	<b>0.01</b>
Akhmeta	678	54	0.02	0.01	2,359	185	0.06	0.02
Gurjaani	1,450	87	0.02	0.01	3,746	0	0.05	0.00
Dedoplistskaro	2,252	609	0.07	0.10	3,502	466	0.11	0.07
Telavi	1,977	142	0.03	0.01	5,659	233	0.08	0.02
Lagodekhi	*	*			2,466	29	0.05	0.00
Sagarejo	2,746	259	0.05	0.02	3,197	94	0.05	0.01
Sighnaghi	644	81	0.01	0.01	2,150	88	0.05	0.01
Kvareli	666	21	0.02	0.00	292	2	0.01	0.00
<b>Imereti</b>	<b>29,184</b>	<b>2,952</b>	<b>0.04</b>	<b>0.02</b>	<b>60,835</b>	<b>4,706</b>	<b>0.09</b>	<b>0.03</b>
Kutaisi	11,014	1,174	0.06	0.03	23,911	1,522	0.13	0.04
Tkibuli	1,132	163	0.04	0.03	2,008	113	0.06	0.02
Tskhaltubo	1,446	145	0.02	0.01	4,137	144	0.06	0.01
Chiatura	693	266	0.01	0.02	3,042	243	0.05	0.02
Bagdadi	777	45	0.03	0.01	2,271	35	0.08	0.01
Vani	216	96	0.01	0.01	2,631	300	0.08	0.05
Zestafoni	1,895	226	0.02	0.01	4,721	140	0.06	0.01
Terjola	604	123	0.01	0.01	2,958	357	0.07	0.04
Samtredia	2,815	398	0.05	0.03	5,672	1,210	0.09	0.11
Sachkhere	5,170	219	0.11	0.02	5,205	250	0.11	0.03
Kharagauli	*	*			1,634	320	0.06	0.06
Khoni	3,422	97	0.11	0.02	2,645	72	0.08	0.01
<b>Samegrelo</b>	<b>13,163</b>	<b>1,316</b>	<b>0.03</b>	<b>0.01</b>	<b>35,929</b>	<b>2,731</b>	<b>0.08</b>	<b>0.03</b>
Zugdidi	3,963	244	0.02	0.01	10,230	805	0.06	0.02
Abasha	578	0	0.02	0.00	2,256	67	0.08	0.01
Martvili	526	25	0.01	0.00	2,051	32	0.05	0.00
Senaki	3,704	385	0.07	0.04	5,536	167	0.11	0.02
Chkhorotskhu	1,265	401	0.04	0.07	2,607	725	0.09	0.12
Tsalenjikha	2,460	166	0.06	0.02	2,783	463	0.07	0.06
Khobi	667	95	0.02	0.01	3,171	116	0.08	0.01
Poti	**	**			6,483	265	0.14	0.03
Mestia	**	**			812	91	0.06	0.03

\* not functioning

\*\* not reported

	2004				2005			
	Total number of calls to patients of all ages	to children	Number of calls per person	per child	Total number of calls to patients of all ages	to children	per person	per child
<b>Shida Kartli</b>	<b>4,283</b>	<b>330</b>	<b>0.01</b>	<b>0.00</b>	<b>18,772</b>	<b>1,020</b>	<b>0.06</b>	<b>0.01</b>
Gori	**	**			7,710	119	0.05	0.00
Kaspi	887	0	0.02	0.00	2,463	53	0.05	0.00
Kareli	1,299	149	0.03	0.01	2,139	111	0.04	0.01
Khashuri	2,097	181	0.03	0.01	4,765	385	0.08	0.03
Tskhinvali	1,359	322	-	-	1,695	352	-	-
<b>Kvemo Kartli</b>	<b>13,963</b>	<b>1,496</b>	<b>0.03</b>	<b>0.01</b>	<b>32,422</b>	<b>2,047</b>	<b>0.07</b>	<b>0.02</b>
Rustavi	9,448	1,237	0.08	0.05	11,335	1,067	0.10	0.04
Bolnisi	1,390	80	0.02	0.00	4,920	76	0.07	0.00
Gardabani	1,276	111	0.01	0.00	5,337	600	0.05	0.02
Dmanisi	*	*			1,713	0	0.06	0.00
Tetritskaro	94	35	0.00	0.01	2,150	272	0.08	0.05
Marneuli	1,755	33	0.01	0.00	6,967	32	0.06	0.00
Tsalka	*	*			**	**		
<b>Guria</b>	<b>3,126</b>	<b>276</b>	<b>0.02</b>	<b>0.01</b>	<b>14,441</b>	<b>1,711</b>	<b>0.07</b>	<b>0.03</b>
Lanchkhuti	919	97	0.02	0.01	2,876	290	0.07	0.04
Ozurgeti	1,689	165	0.02	0.01	5,971	105	0.08	0.01
Chokhatauri	518	14	0.02	0.00	2,846	108	0.12	0.02
<b>Samtskhe - Javakheti</b>	<b>7,492</b>	<b>1,350</b>	<b>0.04</b>	<b>0.03</b>	<b>11,693</b>	<b>503</b>	<b>0.08</b>	<b>0.02</b>
Adigeni	*	*			1,817	205	0.09	0.04
Aspindza	770	100	0.06	0.03	1,795	279	0.14	0.08
Akhalkalaki	1,054	305	0.02	0.02	1,701	580	0.03	0.04
Akhaltzikhe	1,910	372	0.04	0.04	3,750	277	0.08	0.03
Borjomi	3,758	573	0.12	0.08	5,378	370	0.17	0.05
Ninotsminda	*	*			*	*		
<b>Mtskheta - Mtianeti</b>	<b>3,152</b>	<b>458</b>	<b>0.03</b>	<b>0.02</b>	<b>8,077</b>	<b>474</b>	<b>0.06</b>	<b>0.02</b>
Akhalgori	334	85	0.04	0.05	2,011	245	0.26	0.15
Dusheti	488	37	0.01	0.01	1,845	51	0.05	0.01
Tianeti	258	40	0.02	0.02	81	5	0.01	0.00
Mtskheta	1,868	296	0.03	0.02	2,489	173	0.04	0.01
Kazbegi	204		0.04	0.00	1,651		0.31	0.00
<b>Racha - Lechkhumi and Kvemo Svaneti</b>	<b>5,130</b>	<b>1,274</b>	<b>0.10</b>	<b>0.15</b>	<b>7,780</b>	<b>685</b>	<b>0.15</b>	<b>0.08</b>
Ambrolauri	2,037	402	0.13	0.17	1,727	123	0.11	0.05
Lentekhi	795	274	0.09	0.14	1,036	96	0.12	0.05
Oni	1,196	217	0.13	0.16	2,678	184	0.29	0.13
Tsageri	1,102	381	0.07	0.14	2,339	282	0.14	0.10
<b>Georgia</b>	<b>218,188</b>	<b>25,798</b>	<b>0.05</b>	<b>0.03</b>	<b>453,422</b>	<b>35,166</b>	<b>0.10</b>	<b>0.04</b>

