

Mental and Behavioral Disorders

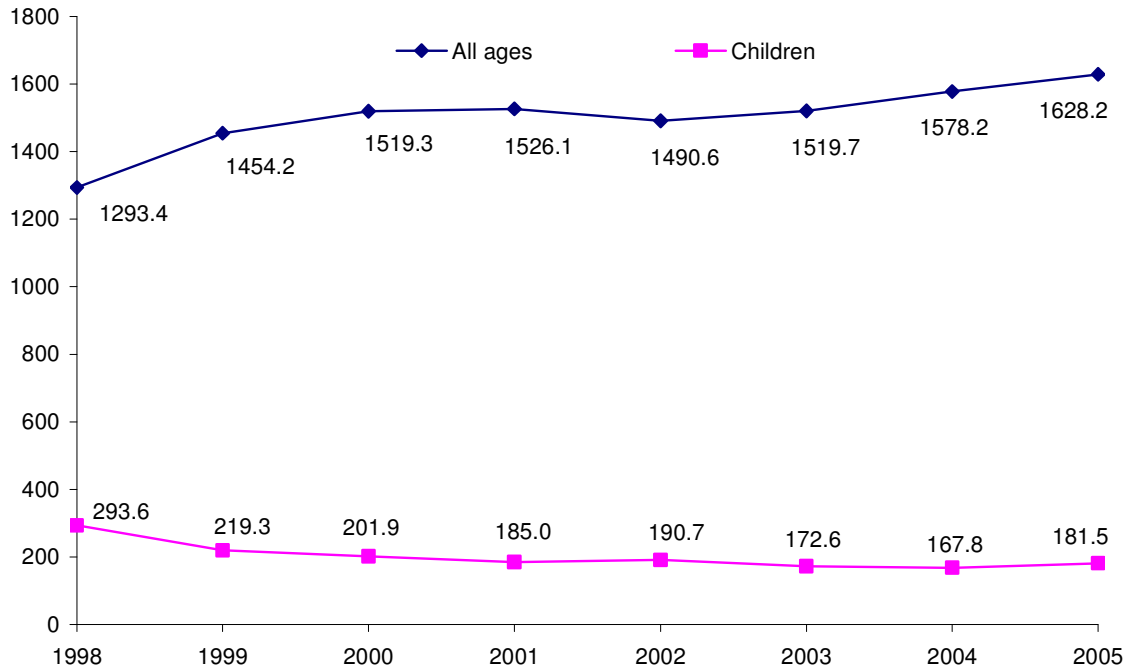


Figure 1. Mental and behavioral disorders, number of patients enrolled at health facilities by the end of the years, rates per 100,000 population, Georgia, 1998 – 2005

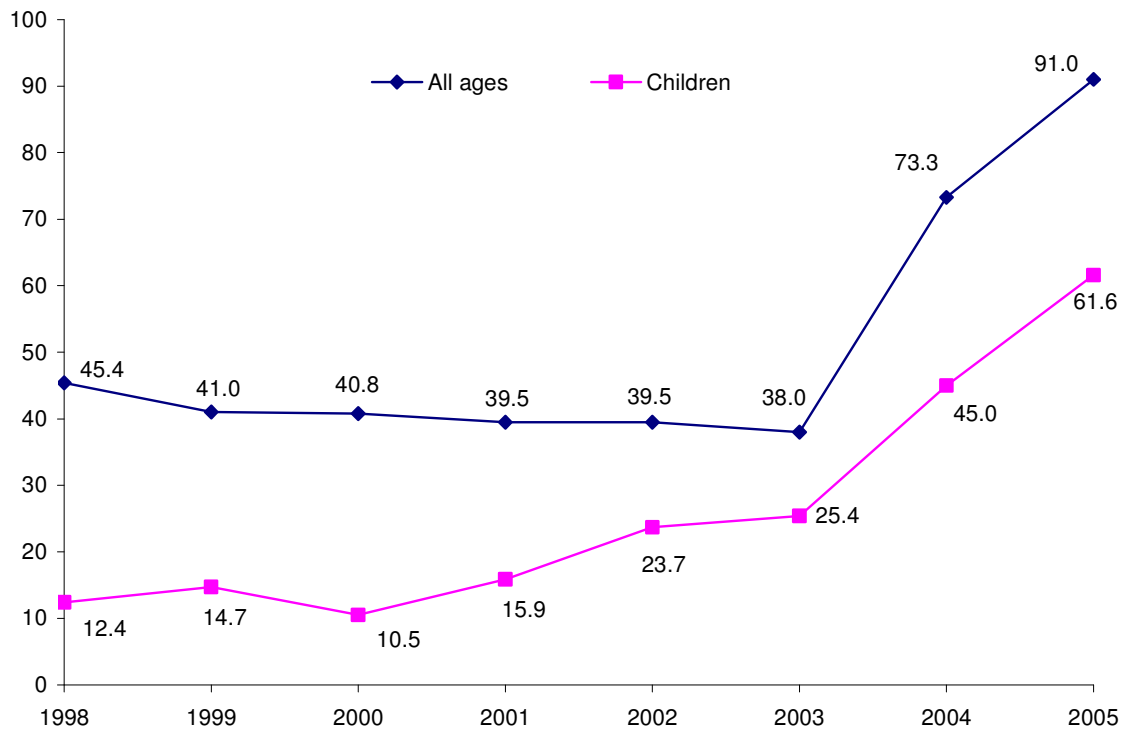


Figure 2. New cases of mental and behavioral disorders, rates per 100,000 population, Georgia, 1998 – 2005

Table 1.

Mental and behavioral disorders, total number of the enrolled patients and new cases *, Georgia, 2002-2005

	2002		2003		2004		2005	
	Total number	Rate per 100,000 population	Total number	Rate per 100,000 population	Total number	Rate per 100,000 population	Total number	Rate per 100,000 population
All mental and behavioural disorders	65,161	1,490.6	65,788	1,519.7	68,993	1,578.2	71,179	1,628.2
<i>New cases</i>	1,728	39.5	1,645	38.0	3,206	73.3	3,974	91.0
Psychosis	26,797	613.0	27,022	624.2	28,184	644.7	29,063	2.1
<i>New cases</i>	816	18.7	849	19.6	1,216	27.8	1,791	41.0
Neurotic non psychiatric disorders	19,218	439.6	19,277	445.3	20,273	463.8	21,130	483.4
<i>New cases</i>	441	10.1	345	8.0	951	21.8	1,116	25.5
Mental retardation (oligophrenia)	19,146	438.0	19,489	450.2	20,536	469.8	20,986	480.1
<i>New cases</i>	471	10.8	451	10.4	1,039	23.8	1,067	24.4
Including mild mental retardation	8,315	190.2	8,336	192.6	8,732	199.7	9,030	206.6
<i>New cases</i>	212	4.8	182	4.2	365	8.3	358	8.2

Table 2.

Mental and behavioral disorders, distribution of the enrolled patients by age and sex groups, Georgia, 2005

	All ages	Including				Females
	0-14	15-17	18-19	20-59		
All cases	71,179	1662	1633	2587	53798	29107
Psychoses	29,063	299	397	780	22,280	12,282
Including:						
Senile and presenile organic psychotic conditions	2,945	0	0	32	1,374	1,245
Reactive nonorganic psychoses	2,414	4	43	10	1,841	1,083
Schizophrenia	16,196	3	29	238	12,793	7,098
Epilepsy with psychoses and mental retardation	3,374	82	53	141	2,392	1,345
Neurotic disorders and other nonpsychotic mental disorders	21,130	294	289	969	16,176	8,848
Including: Neurotic disorders	8,125	35	23	248	6,606	4,297
Psychopathic disorders	2,881	3	6	94	2,357	943
Special symptoms or syndromes	530	52	35	27	143	231
Acute and adjustment reaction, physiological malfunction arising from mental factors	669	2	23	111	349	199
Depressive disorder	230	2	1	5	178	87
Epilepsy with specific nonpsychotic mental disorders	2,590	115	79	68	1,925	966
Specific nonpsychotic mental disorders following organic brain damage following organic brain damage	642	8	11	17	411	302
Other organic disorder	1,109	7	8	12	872	253
Mild, moderate, severe and profound mental retardation	20,986	1,069	947	838	15,342	7,977
Including mild mental retardation	9,030	428	346	165	5,611	2,542

* Patients enrolled by the end of the year – Total number of patients being enrolled at a medical facility by the end of the year

New cases – Total number of the new cases diagnosed during the reporting year

Table 3.

Mental and behavioral disorders, distribution of new cases by age and sex groups, Georgia, 2005

	All	Including			Females
	ages	0-14	15-17	18-19	
All cases	3,974	564	390	354	1,568
Psychoses	1,791	116	125	184	1058
Including:					
Senile and presenile organic psychotic conditions	241	0	0	10	119
Reactive nonorganic psychoses	186	0	1	27	103
Schizophrenia	509	0	13	40	230
Epilepsy with psychoses and mental retardation	164	13	13	22	77
Neurotic disorders and other nonpsychotic mental disorders	1,116	111	55	82	455
Including: Neurotic disorders	235	2	2	6	87
Psychopathic disorders	104	0	2	11	16
Special symptoms or syndromes	6	1	1	0	4
Acute and adjustment reaction, physiological malfunction arising from mental factors	13	0	0	0	8
Depressive disorder	7	0	0	0	5
Epilepsy with specific nonpsychotic mental disorders	299	87	18	3	125
Specific nonpsychotic mental disorders following organic brain damage following organic brain damage	88	3	5	4	44
Other organic disorder	43	3	1	4	17
Mild, moderate, severe and profound mental retardation	1,067	337	210	88	431
Including mild mental retardation	358	134	62	25	167

Table 4.

Patients with mental disorders being under the consultative care, Georgia, 2002 - 2005

	2002		2003		2004		2005	
	Total nuber	Rate per 100,000 population	Total nuber	Rate per 100,000 population	Total nuber	Rate per 100,000 population	Total nuber	Rate per 100,000 population
All cases	1586	36.3	795	18.4	959	21.9	1166	26.7
Including new cases	31	0.7	47	1.1	36	0.8	243	5.6

Table 5.

Incidence and prevalence of mental disorders according to the regions, rates per 100,000 population, Georgia, 2004 - 2005

	By the end of the year				New cases			
	2004		2005		2004		2005	
	All ages	Children	All ages	Children	All ages	Children	All ages	Children
Ajara	1,505.0	500.3	1,632.4	377.4	97.3	135.0	161.4	160.5
Tbilisi	962.4	218.0	963.9	240.3	38.1	41.8	39.9	41.3
Kakheti	1,427.1	56.6	1,425.7	94.3	64.1	46.0	72.0	50.7
Imereti	2,368.8	46.3	2,316.3	49.3	47.7	17.7	72.2	34.6
Samegrelo	2,297.1	283.5	2,501.0	389.8	215.0	55.8	222.5	142.8
Shida Kartli	2,068.2	99.3	2,132.5	135.8	55.7	27.7	94.3	77.4
Kvemo Kartli	1,288.1	83.8	1,348.3	100.4	73.2	23.2	80.6	27.4
Guria	1,874.3	106.2	1,934.3	138.0	97.0	106.2	101.8	31.9
Samtskhe-Javakheti	787.1	85.5	801.1	79.3	27.0	12.2	35.7	16.3
Mtskheta-Mtianeti	1,258.7	38.5	1,339.3	50.1	52.6	15.4	96.5	23.1
Racha-Lechkhumi and Kvemo Svaneti	0.0	0.0	714.2	0.0	0.0	0.0	39.2	0.0
Georgia	1,578.2	167.8	1,628.2	181.5	73.3	45.0	91.0	61.6

Table 6.

Hospitalizations in special mental clinics, Georgia, 2004 - 2005

	2004	2005
Total number of discharges	3,782	3,787
Including hospital deaths	84	111
Case fatality rate (%)	2.2	2.9
Number of patient treated in the day-time hospitals	919	522

Diseases of the Nervous System and Sense Organs

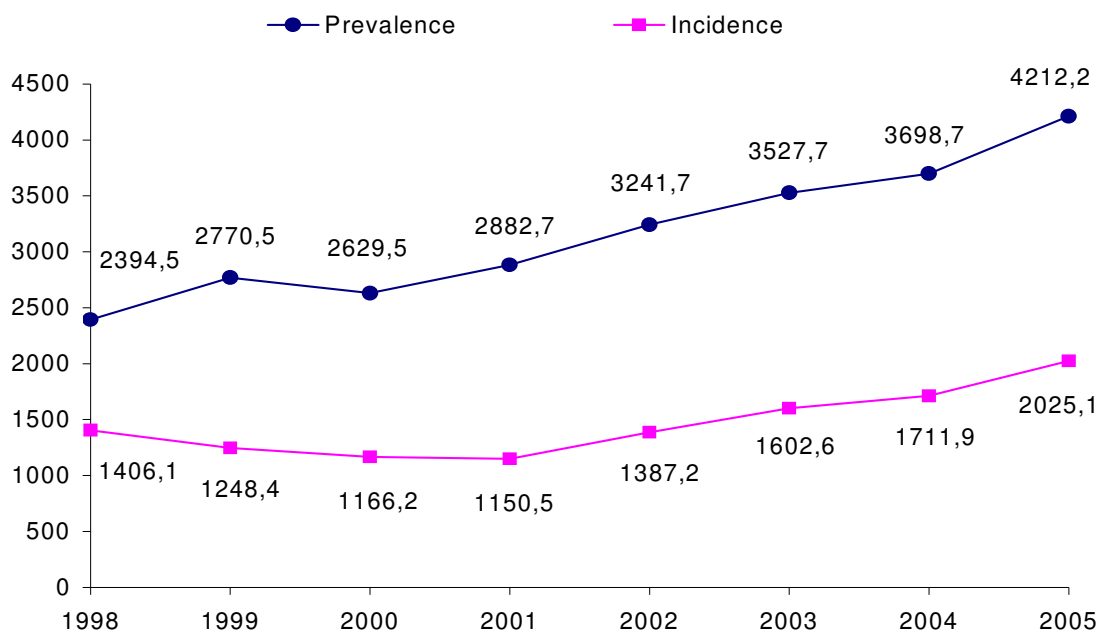


Figure 1. Diseases of the nervous system and sense organs, incidence and prevalence rates per 100,000 population, Georgia, 1998 - 2005

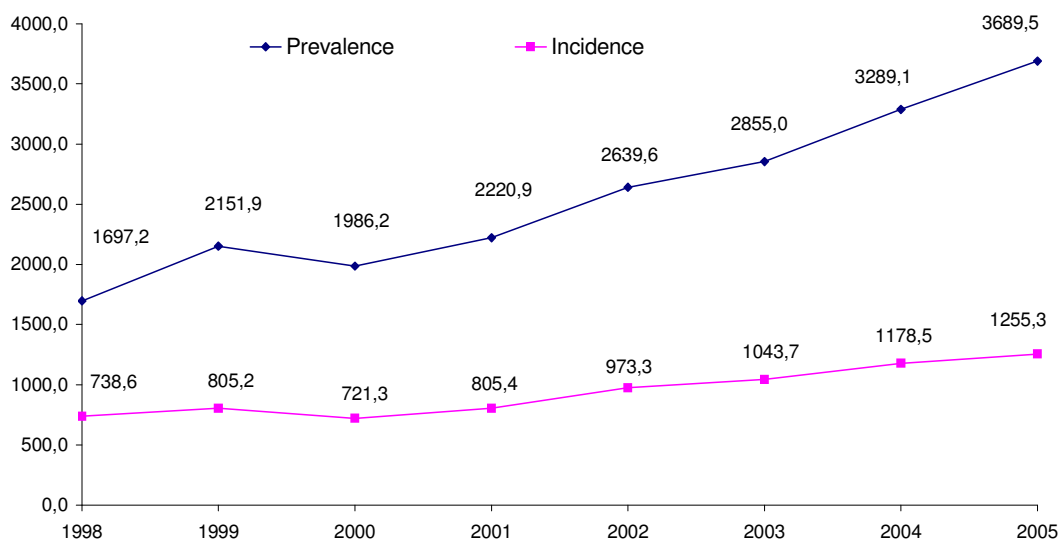


Figure 2. Diseases of the nervous system and sense organs in children, incidence and prevalence rates per 100,000 children, Georgia, 1998 - 2005

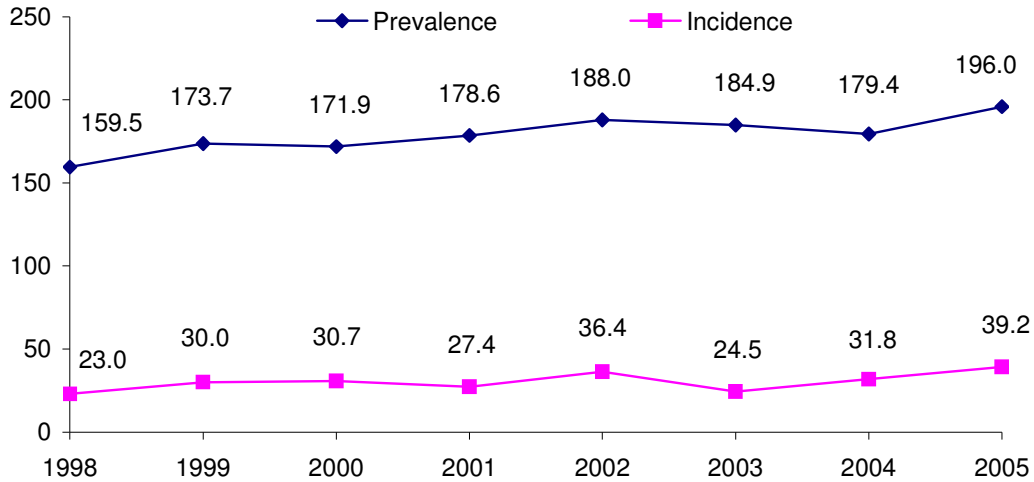


Figure 3. Infantile cerebral palsy in children, incidence and prevalence rates per 100,000 children, Georgia, 1998 – 2005

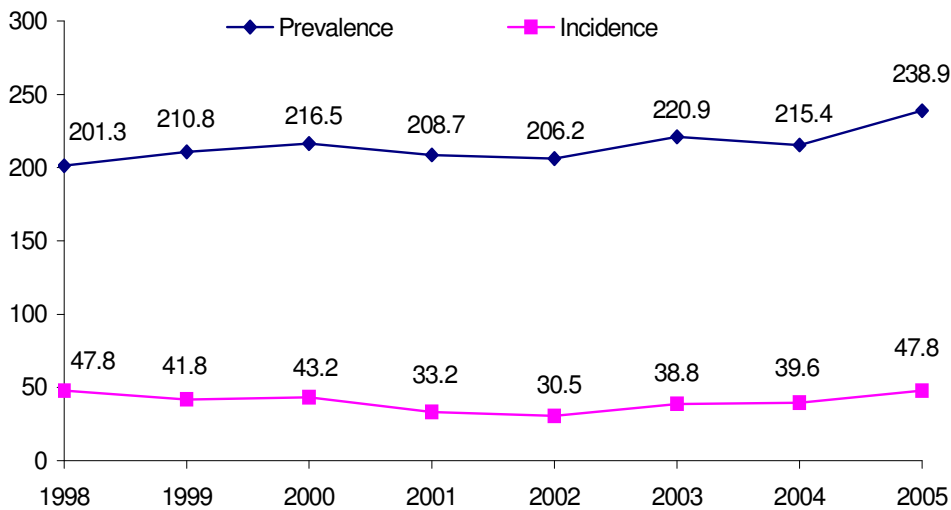


Figure 4. Epilepsy in children, incidence and prevalence rates per 100,000 children, Georgia, 1998 – 2005

Table 1.

Incidence and prevalence of the diseases of the nervous system and sense organs, Georgia, 2004-2005

	2004				2005			
	Total number of registered cases	Prevalence rate per 100,000 population	Total number of new cases	Incidence rate per 100,000 population	Total number of registered cases	Prevalence rate per 100,000 population	Total number of new cases	Incidence rate per 100,000 population
Diseases of the nervous system and sense organs	143,783	3,289.1	51,520	1,178.5	161,288	3,689.5	54,874	1,255.3
	Including:							
Infantile cerebral palsy	1,885	43.1	405	9.3	2,179	49.8	515	11.8
Epilepsy without psychosis and mental retardation	7,405	169.4	1,193	27.3	7,842	179.4	1,355	31.0
Disorders of the peripheral nervous system	29,931	684.7	12,966	296.6	34,571	790.8	12,986	297.1
Glaucoma	6,131	140.2	1,683	38.5	7,005	160.2	1,792	41.0
Cataract	16,435	376.0	5,007	114.5	19,593	448.2	5,317	121.6
Myopia	16,806	384.4	5,517	126.2	19,115	437.3	5,518	126.2
Chronic otitis	10,572	241.8	5,100	116.7	11,349	259.6	5,811	132.9

Table 2.

Incidence and prevalence of the diseases of the nervous system and sense organs in children, Georgia, 2004-2005

	2004				2005			
	Total number of registered cases	Prevalence rate per 100,000 children	Total number of new cases	Incidence rate per 100,000 children	Total number of registered cases	Prevalence rate per 100,000 children	Total number of new cases	Incidence rate per 100,000 children
Diseases of the nervous system and sense organs	33,878	3,698.7	15,680	1,711.9	38,581	4,212.2	18,549	2,025.1
	Including:							
Infantile cerebral palsy	1,643	179.4	291	31.8	1,795	196.0	359	39.2
Epilepsy without psychosis and mental retardation	1,973	215.4	363	39.6	2,188	238.9	438	47.8
Disorders of the peripheral nervous system	1,821	198.8	768	83.8	2,025	221.1	1,015	110.8
Glaucoma	58	6.3	20	2.2	82	9.0	33	3.6
Cataract	174	19.0	43	4.7	182	19.9	41	4.5
Myopia	4,792	523.2	1,715	187.2	5,482	598.5	1,671	182.4
Chronic otitis	3,935	429.6	2,615	285.5	4,422	482.8	3,018	329.5

Table 3.
Diseases of the nervous system and sense organs, incidence according to the regions, Georgia, 2004 - 2005

	2004				2005			
	All ages		Children		All ages		Children	
	Total number of new cases	Incidence rate per 100,000 population	Total number of new cases	Incidence rate per 100,000 population	Total number of new cases	Incidence rate per 100,000 population	Total number of new cases	Incidence rate per 100,000 population
Abkhazia	6,788	--	732	--	6,790	--	666	--
Ajara	2,243	596.5	438	484.8	3,056	812.7	1,081	1,196.5
Tbilisi	18,550	1,714.9	7,792	3,701.0	21,624	1,999.1	10,279	4,882.2
Kakheti	2,773	681.0	535	630.7	2,822	693.1	590	695.6
Imereti	5,431	776.2	1,337	983.6	4,964	709.5	838	616.5
Samegrelo	2,854	612.3	648	695.8	3,044	653.1	567	608.8
Shida Kartli	5,112	1,627.8	2,237	3,266.7	5,590	1,780.0	2,214	3,233.2
Kvemo Kartli	2,366	475.5	833	690.9	2,086	419.3	923	765.6
Guria	1,421	991.2	741	2,622.6	1,667	1,162.8	796	2,817.3
Samtskhe-Javakheti	932	448.9	83	168.9	1,297	624.8	220	447.6
Mtskheta-Mtianeti	1,051	837.8	157	605.1	1,268	1,010.8	246	948.2
Racha-Lechkhumi and Kvemo Svaneti	506	992.8	114	1,364.0	639	1,253.7	129	1,543.4
Departments other than the MOLHSA	1,493	--	33	--	27	--	0	--
Georgia	51,520	1,178.5	15,680	1,711.9	54,874	1,255.3	18,549	2,025.1

Table 4.
Functioning of neurological hospital beds, Georgia, 2004 - 2005

	2004				2005			
	Total number of beds	Average length of stay	Occupancy rate (days)	Bed rotation rate	Total number of beds	Average length of stay	Occupancy rate (days)	Bed rotation rate
Ajara	65	11.6	112.2	9.6	90	10.3	110.9	10.9
Tbilisi	261	9.3	132.5	14.5	318	9.4	110.0	12.2
Kakheti	0	0	0	0	0	0	0	0
Imereti	53	11.3	157.8	14.6	53	11.4	144.2	13.4
Samegrelo	25	10.0	87.0	8.7	25	7.2	58.2	8.1
Shida Kartli	10	9.6	33.2	3.4	0	0	0	0
Kvemo Kartli	45	7.4	63.6	8.8	45	6.5	54.7	8.6
Guria	10	9.3	136.5	14.9	10	3.6	34.2	9.6
Samtskhe-Javakheti	0	0	0	0	0	0	0	0
Mtskheta-Mtianeti	0	0	0	0	0	0	0	0
Racha-Lechkhumi and Kvemo Svaneti	8	10.9	41.5	3.8	8	12.5	47.7	3.9
Departments other than the MOLHSA	103	16.5	89.9	5.4	40	14.2	55.7	3.7
Georgia	580	10.3	115.0	11.4	589	9.6	101.2	10.9

Table 5.
Diseases of the nervous system and sense organs, hospital discharges by the regions, Georgia, 2005

	Hospital discharges, all ages		Including children		Case fatality rate	
	Number of cases	Hospitalization level per 100,000 population	Number of cases	Hospitalization level per 100,000 children	All ages	In children
Ajara	1,739	462.5	272	301.1	1.7	0
Tbilisi	6,053	559.6	1,834	871.1	2.1	1.2
Kakheti	451	110.8	65	76.6	0	0
Imereti	1,227	175.4	367	270.0	0.3	0
Samegrelo	531	113.9	71	76.2	1.3	1.4
Shida Kartli	341	108.6	131	191.3	1.5	0.8
Kvemo Kartli	194	39.0	84	69.7	1.6	0
Guria	123	85.8	70	247.8	0.8	0
Samtskhe-Javakheti	66	31.8	20	40.7	0	0
Mtskheta-Mtianeti	0	0.0	0	0.0	0	0
Racha-Lechkhumi	21	41.2	0	0.0	0	0
Departments other than the MOLHSA	64	0.0	0	0.0	0	0
Georgia	10,810	247.3	2,914	318.1	1.6	0.8

Table 6.

**Diseases of the nervous system and sense organs,
hospital discharges, Georgia, 2005**

	All ages		Number of discharges	In Children		
	Number of discharges	Case fatality rate %		Case fatality rate (%)	Including under 1 year of age	Case fatality rate (%)
Diseases of the nervous system and sense organs	10,810	1.6	2914	0.8	942	1.4
		Including:				
Infantile cerebral palsy	208	0.5	207	0.5	29	0
Disorders of the peripheral nervous system	789	1.9	374	0	224	0
Glaucoma	492	0	8	0	1	0
Cataract	2,553	0	39	0	0	0

Table 7.

**Diseases of the nervous system and sense organs,
surgical activities, Georgia, 2002 - 2005**

Site of the operation	2002		2003		2004		2005	
	Number of operations	Case fatality rate (%)	Number of operations	Case fatality rate (%)	Number of operations	Case fatality rate (%)	Number of operations	Case fatality rate (%)
The nervous system and sense organs	1,563	4.9	1,932	5.3	1,932	4.7	2,112	5.0
Brain	822	6.2	993	9.0	871	9.3	835	9.6
The peripheral nervous system	562	1.4	617	0.3	278	0	281	0.7

Table 8.

Eye surgery, Georgia, 2002 - 2005

	2002	2003	2004	2005
Total number	4,211	4,829	5,077	4,317
<i>In-patient surgical operations:</i>				
Glaucoma	544	735	728	404
Enucleating	173	121	126	95
Cataract	2,216	2,943	3,100	2,401
<i>Out-patient surgical operations:</i>				
Total number	489	854	963	1,916
Glaucoma	--	55	56	323
Cataract	120	333	362	946

Table 9.

**Diseases of the nervous system and sense organs,
surgical activities according to the regions, Georgia, 2005**

	Operations on the nervous system			Eye operations*			
	All cases	Including on		All cases	Including		
		Brain	The peripheral nervous system		Glaucoma	Enucleating	Cataract
Ajara	173	51	0	221	6	0	161
Tbilisi	1,634	710	241	3,025	270	54	1,454
Kakheti	0	0	0	238	26	11	196
Imereti	247	55	40	546	91	20	377
Samegrelo	18	2	0	152	8	8	116
Shida Kartli	28	13	0	115	1	2	85
Kvemo Kartli	4	4	0	19	2	0	12
Guria	1	0	0	0	0	0	0
Samtskhe-Javakheti	0	0	0	0	0	0	0
Mtskheta-Mtianeti	0	0	0	1	0	0	0
Racha-Lechkhumi	0	0	0	0	0	0	0
Departments other than the MOLHSA	7	0	0	0	0	0	0
Georgia	2,112	835	281	4,317	404	95	2,401

* In-patient operations

Diseases of the Circulatory System

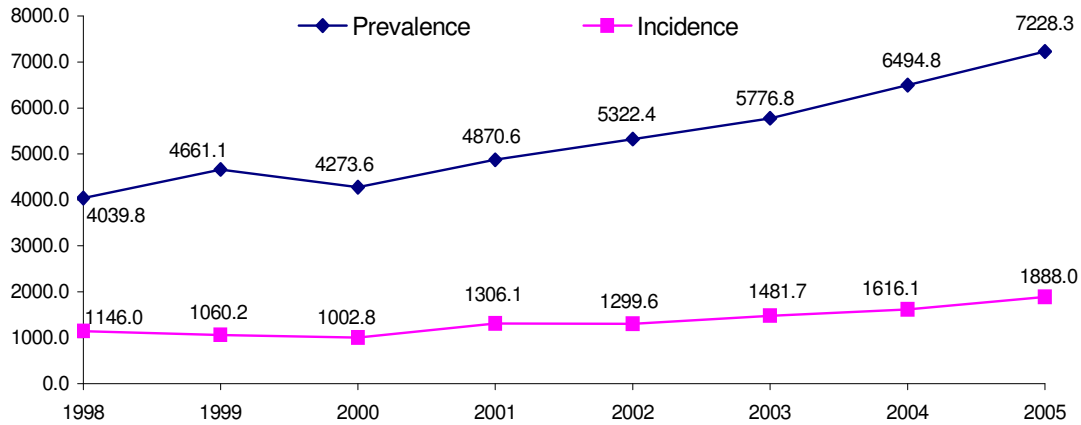


Figure 1. Diseases of the circulatory system, incidence and prevalence rates per 100,000 population, Georgia, 1998 – 2005

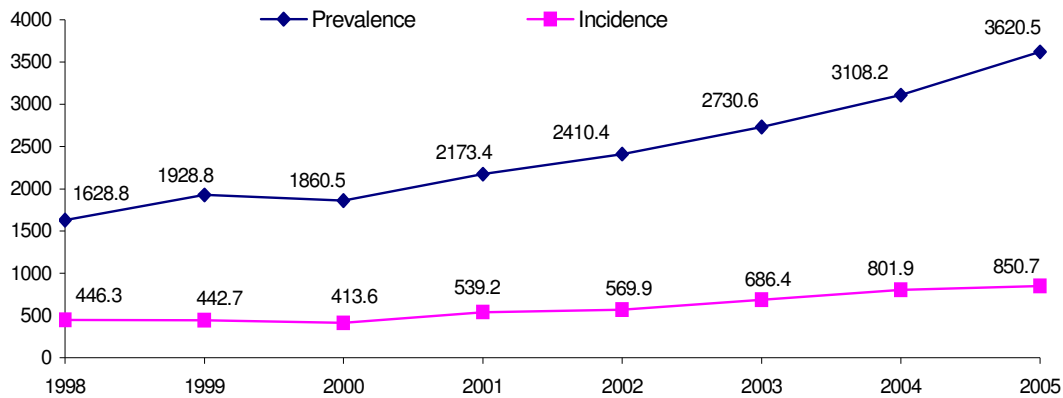


Figure 2. Hypertensive disease, incidence and prevalence rates per 100,000 population, Georgia, 1998 - 2005

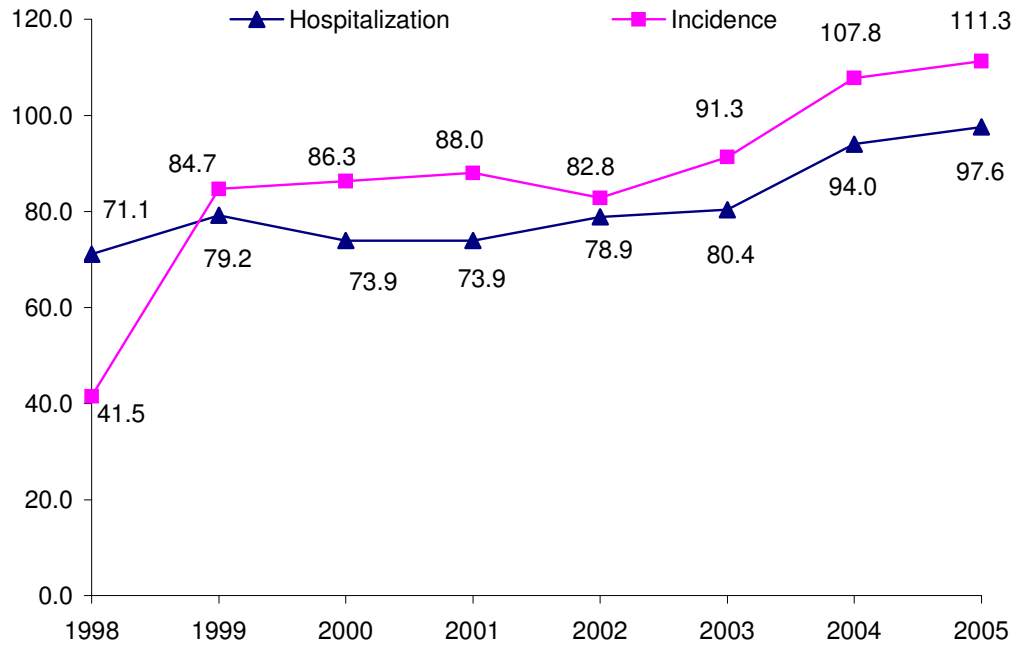


Figure 3. Cerebrovascular diseases, incidence and hospitalization rates per 100,000 population, Georgia, 1998 – 2005

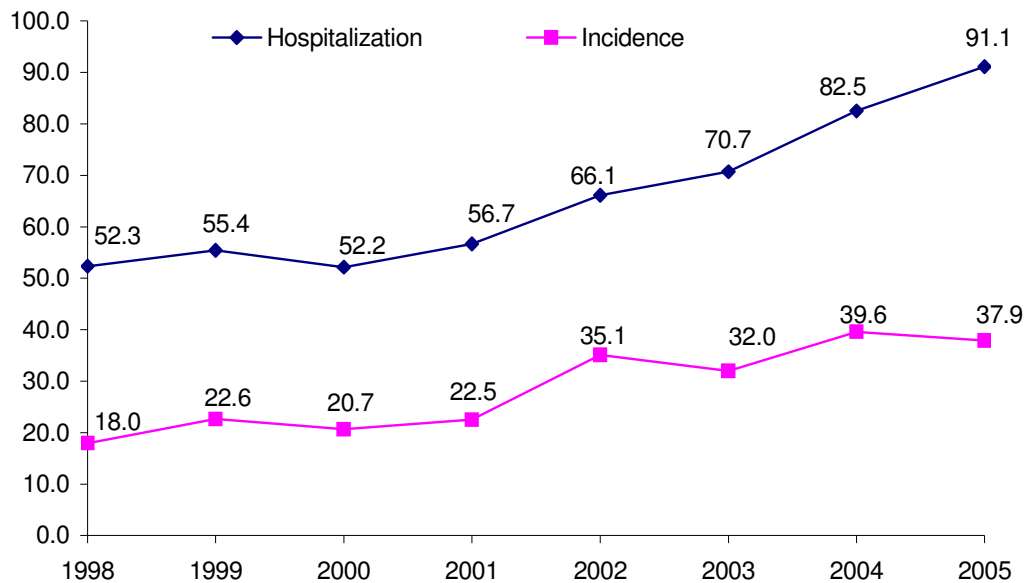


Figure 4. Acute myocardial infarction, incidence and hospitalization rates per 100,000 population, Georgia, 1998 - 2005

Table 1.

Diseases of the circulatory system, incidence and prevalence, rates per 100,000 population, Georgia, 1999 – 2005

	1999	2000	2001	2002	2003	2004	2005
All cases	4,661.1	4,273.6	4,870.6	5,322.4	5,776.8	6,494.8	7,228.3
Including new cases	1,060.2	1,002.8	1,306.1	1,299.6	1,481.7	1,616.1	1,888.0
	Including						
Rheumatic diseases	345.7	334.0	343.5	356.3	358.8	350.6	378.8
Including new cases	67.8	70.9	73.8	73.6	68.9	76.0	82.7
Hypertensive diseases	1,928.8	1,860.5	2,173.4	2,410.4	2,730.6	3,108.2	3,620.5
Including new cases	442.7	413.6	539.2	569.9	686.4	801.9	950.7
Ischemic heart diseases	1,582.9	1,397.5	1,613.3	1,760.8	1,875.7	1,955.1	2,213.2
Including new cases	309.9	290.4	435.9	400.1	441.0	449.8	545.7
	Including						
Acute myocardial infarction	92.0	55.0	56.2	70.9	69.8	75.8	65.1
Including new cases	22.6	20.7	22.5	35.1	32.0	39.6	37.9
Angina pectoris	487.7	416.8	491.3	519.6	560.0	575.9	715.6
Including new cases	111.3	95.6	116.0	117.8	125.5	140.0	188.4
Cerebrovascular diseases	222.4	195.5	217.6	235.6	244.2	289.9	344.7
Including new cases	84.7	86.3	88.0	82.8	91.3	107.8	111.3

Table 2.

Diseases of the circulatory system, incidence and prevalence in children, rates per 100,000 children, Georgia, 1999 – 2005

	1999	2000	2001	2002	2003	2004	2005
All cases	474.8	431.6	467.0	506.7	604.1	706.7	689.0
Including new cases	151.9	129.6	132.6	144.2	204.7	176.2	174.0
	Including						
Rheumatic diseases	210.1	199.6	212.9	229.5	262.2	236.8	263.9
Including new cases	60.1	52.9	56.9	57.9	69.7	57.7	82.1
Hypertensive diseases	7.3	5.7	6.1	4.3	4.6	5.5	6.1
Including new cases	3.2	3.7	2.8	1.1	2.2	2.6	3.4
Ischemic heart diseases	2.2	0.1	0.2	0.1	1.1	2.5	0
Including new cases	1.6	0.0	0.1	0.0	0.8	2.0	0.0
	Including						
Angina pectoris	0.0	0.0	0.0	0.0	0.0	0.0	0
Including new cases	0.0	0.0	0.0	0.0	0.0	0.0	0.0
Cerebrovascular diseases	9.2	9.4	5.2	0.0	0.1	0.7	2.4
Including new cases	4.4	4.8	0.1	0.0	0.1	0.5	0.3

Table 3.

Diseases of the circulatory system, distribution by certain groups of diseases Georgia, 2005

	Registered cases				New cases			
	All ages		In children		All ages		In children	
	Total number	%	Total number	%	Total number	%	Total number	%
Diseases of the circulatory system	315,988	100	6,311	100	82,533	100	1,594	100
	Including:							
Rheumatic diseases	16,561	5.2	2,417	38.3	3,615	4.4	752	47.2
Hypertensive diseases	158,271	50.1	56	0.9	41,559	50.3	31	1.9
Ischaemic heart disease	96,750	30.6	3	0.05	23,855	28.9	0	0
	Including:							
Acute myocardial infarction	2,847	0.9	0		1,659	2.0	0	0.0
Angina pectoris	31,281	9.9	0		8,238	10.0	0	0.0
Cerebrovascular diseases	15,067	4.8	22	0.3	4,866	5.9	3	0.2

Table 4.

Diseases of the circulatory system according to the regions, incidence and prevalence rates per 100,000 population, Georgia, 2004-2005

	2004		2005	
	Prevalence rate	Incidence rate	Prevalence rate	Incidence rate
Tbilisi	9,086.7	1,688.6	10,053.1	2,088.5
Ajara	2,496.4	1,077.9	2,802.3	1,145.2
Kakheti	6,001.0	1,305.1	6,513.1	1,506.5
Imereti	5,614.3	1,902.6	6,651.2	1,880.9
Samegrelo	5,337.5	1,199.3	5,787.8	1,233.4
Shida Kartli	3,790.3	1,297.0	4,559.3	1,762.5
Kvemo Kartli	2,920.6	809.0	3,070.0	702.3
Guria	5,101.9	1,477.4	5,647.4	1,566.0
Samtskhe-Javakheti	4,880.1	1,582.4	5,418.2	1,600.7
Mtskheta-Mtianeti	5,020.6	1,318.5	4,876.3	1,438.1
Racha-Lechkhumi	22,019.3	2,515.8	22,033.0	2,454.4
Georgia	6,494.8	1,616.1	7,228.3	1,888.0

Table 5.

Rheumatic diseases according to the regions, incidence and prevalence rates per 100,000 population, Georgia, 2004-2005

	2004				2005			
	Registered cases		New cases		Registered cases		New cases	
	Total number	Prevalence rate	Total number	Incidence rate	Total number	Prevalence rate	Total number	Incidence rate
Tbilisi	1,947	180.0	214	19.8	3,073	435.5	512	47.3
Ajara	1,422	378.2	618	164.3	1,565	416.2	552	146.8
Abkhazia	757	-	201	-	538	-	179	-
Imereti	2,920	417.3	666	95.2	3,027	432.6	718	102.6
Kakheti	1,435	352.4	242	59.4	1,417	348.0	230	56.5
Samegrelo	2,245	481.6	374	80.2	2,372	508.9	401	86.0
Shida Kartli	955	304.1	314	100.0	1,047	333.4	294	93.6
Kvemo Kartli	1,621	325.8	327	65.7	1,572	316.0	248	49.8
Guria	628	438.1	135	94.2	638	445.0	133	92.8
Samtskhe-Javakheti	664	319.8	180	86.7	813	391.6	312	150.3
Racha-Lechkhumi	330	647.4	20	39.2	284	557.2	12	23.5
Mtskheta-Mtianeti	246	196.1	11	8.8	215	171.4	24	19.1
Departments other than the MOLHSA	646	-	216	-				
Georgia	15,325	350.6	3,324	76.0	16,561	378.8	3,615	82.7

Table 6.

Rheumatic diseases, incidence and prevalence rates per 100,000 population, Georgia, 2002-2005

	2002		2003		2004		2005	
	Prevalence rate	Incidence rate	Prevalence rate	Incidence rate	Prevalence rate	Incidence rate	Prevalence rate	Incidence rate
All rheumatic diseases	356.3	73.6	358.8	68.9	350.6	76.0	378.8	82.7
			Including					
<i>Acute rheumatic fever</i>	<i>189.7</i>	<i>44.8</i>	<i>184.7</i>	<i>38.7</i>	<i>170.4</i>	<i>38.6</i>	<i>175.4</i>	<i>42.1</i>
			Including					
<i>Rheumatic fever without heart involvement</i>	<i>139.0</i>	<i>34.3</i>	<i>136.8</i>	<i>29.7</i>	<i>124.7</i>	<i>27.7</i>	<i>125.2</i>	<i>28.3</i>
<i>Rheumatic disease with heart involvement</i>	<i>34.6</i>	<i>6.1</i>	<i>32.2</i>	<i>6.5</i>	<i>30.5</i>	<i>7.5</i>	<i>32.2</i>	<i>7.8</i>
<i>Rheumatic chorea</i>	<i>16.1</i>	<i>4.3</i>	<i>16.7</i>	<i>3.6</i>	<i>15.2</i>	<i>3.4</i>	<i>18.1</i>	<i>6.0</i>
<i>Chronic rheumatic heart diseases</i>	<i>166.6</i>	<i>28.8</i>	<i>174.1</i>	<i>30.2</i>	<i>180.1</i>	<i>37.4</i>	<i>203.4</i>	<i>40.6</i>

Table 7.

**Surgical activity on the circulatory system,
Georgia, 2002-2005**

Cause and site of the operation	2002		2003		2004		2005	
	Total number of operations	Case fatality rate (%)	Total number of operations	Case fatality rate (%)	Total number of operations	Case fatality rate (%)	Total number of operations	Case fatality rate (%)
Cardiac surgery	577	2.4	540	3.0	739	3.1	1150	3.1
		Including						
on the open heart	315	4.1	256	5.9	142	7.0	232	4.3
due to a congenital malformation	-	-	-	-	213	0	280	7.5
Implantation of a cardio stimulator	129	0.8	130	0.8	131	0	159	0
Endovascular balloon dilation	128	0	129	0	184	0	366	0
Vascular surgery	1,166	2.0	1,444	1.7	1,359	3.2	1,518	2.2
		Including						
on arteries	383	1.3	369	4.6	356	2.8	419	6.7
on veins	440	0	600	0	579	1.2	709	0.14
on lymphatic vessels	9	0	143	0	23	0	22	0
endovascular surgery	38	0	280	0.4	313	2.2	182	0.5

Table 8.

Diseases of the circulatory system, hospitalization and case fatality, Georgia, 2005

	All ages	In children	Case fatality rate %
Diseases of the circulatory system	28,284	551	6.8
	Including		
Acute rheumatic fever	445	143	1.3
Chronic rheumatic heart diseases	258	46	2.7
Hypertensive diseases	3,112	1	2.2
acute myocardial infarction	3,984	0	13.3
other acute and sub acute types of ischemic heart disease	1,958	1	3.7
angina pectoris	5,319	1	0.5
other types of chronic ischemic heart disease	3,244	2	2.2
Cerebrovascular diseases	4,266	3	17.2
subarachnoid hemorrhage	595	1	16.1
other intracerebral and intracranial hemorrhages	1,030	2	19.3
occlusion of cerebral artery (brain infarction)	524	0	21.6
transitional ischemia of the brain	552	0	3.8
acute not specified cerebrovascular diseases	953	0	25.9
cerebral atherosclerosis	227	0	1.3

Table 9.

Diseases of the circulatory system, hospitalization and case fatality according to the regions, Georgia, 2005

	Number of hospital discharges	Hospitalization rate per 100,000 population	Number of hospital deaths	Case fatality rate %
Ajara	2,752	731.9	238	8.6
Tbilisi	14,793	1,367.6	1,025	6.9
Kakheti	1,314	322.7	84	6.4
Imereti	3,820	546.0	248	6.5
Samegrelo	1,285	275.7	54	4.2
Shida Kartli	951	302.8	63	6.6
Kvemo Kartli	1,495	300.5	76	5.1
Guria	404	281.8	40	9.9
Samtskhe - Javakheti	431	207.6	39	9.1
Mtskheta-Mtianeti	382	304.5	28	7.3
Racha-Lechkhumi and Kvemo Svaneti	266	522.5	10	3.8
Abkhazia	209	-	10	4.8
Departments other than the MOLHSA	182	-	4	2.2
Georgia	28,284	647.0	1,919	6.8

Diseases of the Respiratory System

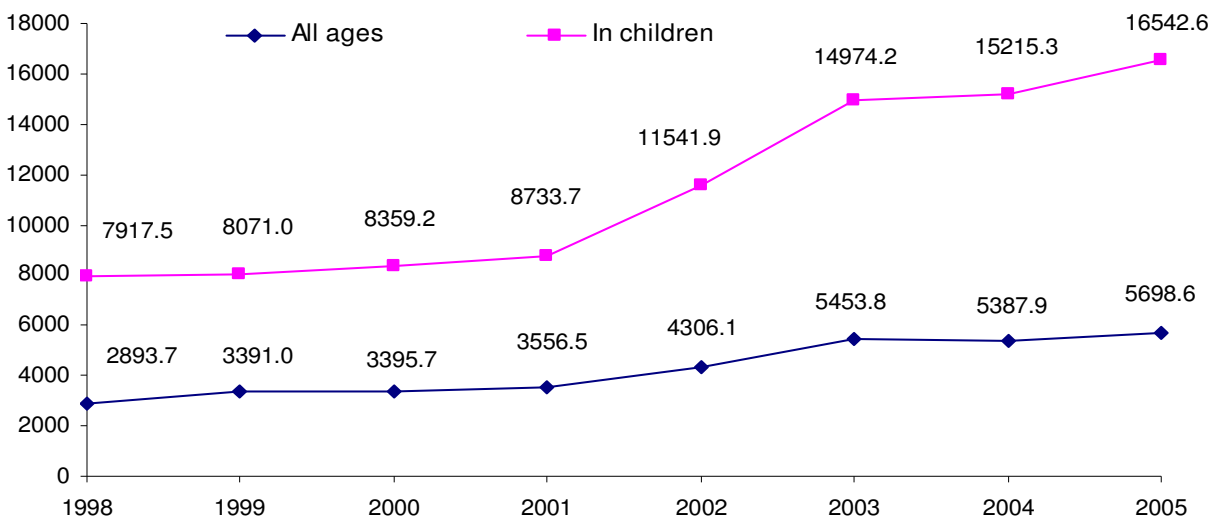


Figure 1. Diseases of the respiratory system, incidence in the whole population and in children, rates per 100,000 population, Georgia, 1998 - 2005

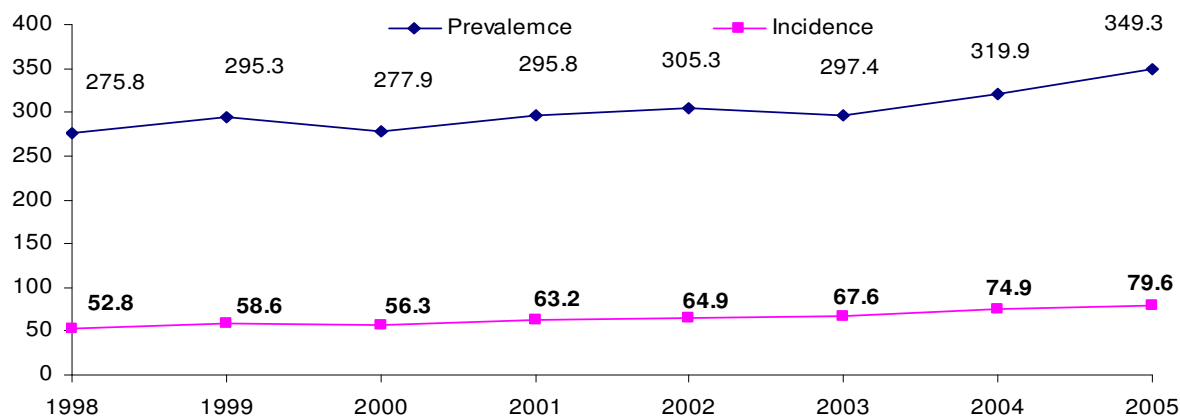


Figure 2. Bronchial asthma, incidence and prevalence rates per 100,000 population, Georgia, 1998 - 2005

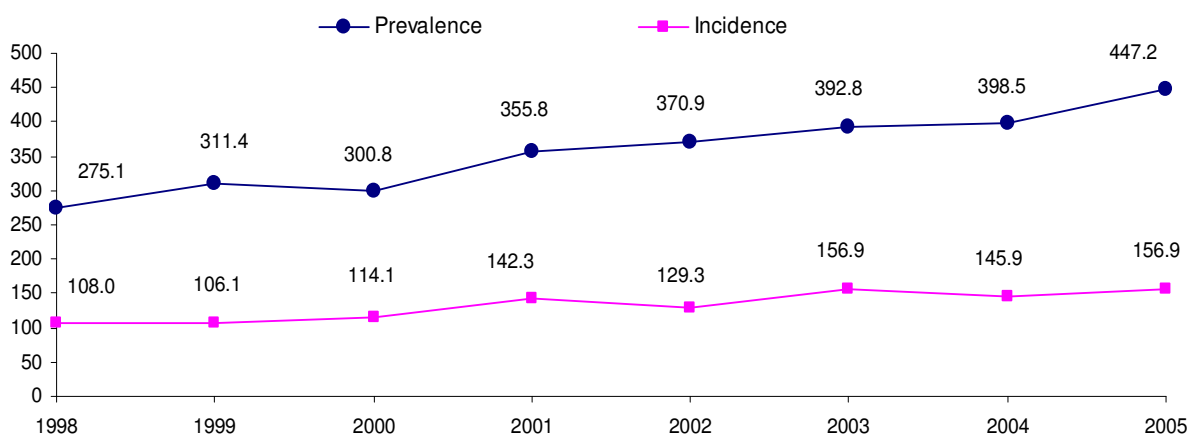


Figure 3. Chronic bronchitis and unspecified emphysema, incidence and prevalence rates per 100,000 population, Georgia, 1998 - 2005

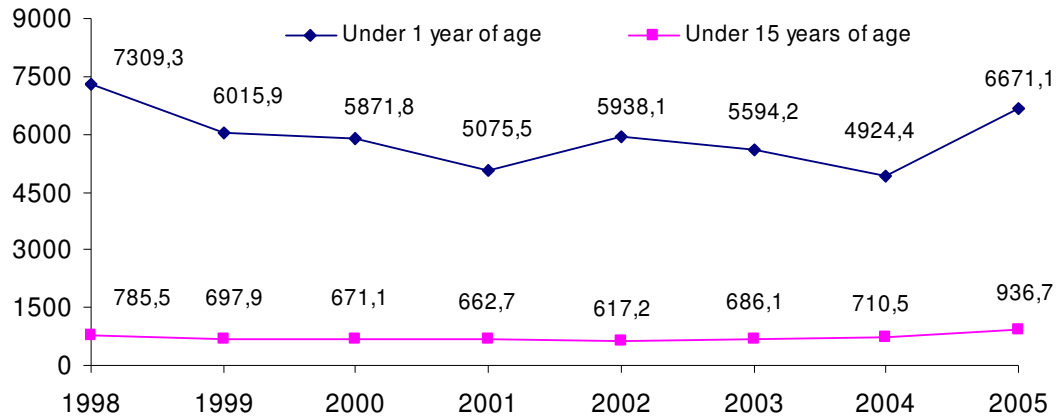


Figure 4 . Diseases of the respiratory system, hospitalization in infants and children, rates per 100,000 children, Georgia, 1998 - 2005

Table 1.

Diseases of the respiratory system, incidence and prevalence rates per 100,000 population, Georgia, 2004 - 2005

	2004				2005			
	Prevalence rate		Incidence rate		Prevalence rate		Incidence rate	
	All ages	In children	All ages	In children	All ages	In children	All ages	In children
Ajara	2,665.3	4,332.1	1,694.9	3,064.8	4,616.3	11,471.1	3,482.6	10,080.9
Tbilisi	11,833.9	40,153.6	11,086.4	38,696.9	12,738.4	43,616.6	11,294.1	40,624.8
Kakheti	5,244.1	10,373.6	3,734.4	8,674.7	5,670.2	12,160.9	4,220.5	10,509.2
Imereti	4,213.9	8,543.9	2,660.3	5,787.4	4,531.2	8,715.3	2,829.4	6,117.7
Samegrelo	4,216.0	7,665.1	2,143.1	4,397.9	4,103.8	6,824.4	2,128.5	3,871.8
Shida Kartli	7,353.9	22,671.5	6,337.7	20,852.0	8,061.1	23,788.7	6,963.8	21,918.0
Kvemo Kartli	2,622.2	5,058.6	1,460.0	3,616.3	2,760.2	5,579.5	1,533.6	4,243.3
Guria	8,640.7	20,025.5	7,108.8	17,838.2	8,921.1	21,363.3	7,297.2	19,204.4
Samtskhe - Javakheti	3,315.1	3,426.2	1,433.1	1,428.3	3,384.9	3,857.6	1,831.4	2,246.2
Mtskheta-Mtianeti	4,362.9	8,356.1	3,097.0	6,772.0	4,775.1	9,285.0	3,343.4	7,473.5
Racha-Lechkhumi and Kvemo Svaneti	6,058.6	8,554.7	2,738.9	5,037.1	5,501.4	7,968.4	2,256.3	4,403.0
Georgia	7,022.3	17,666.0	5,387.9	15,215.3	7,510.2	19,326.8	5,698.6	16,542.6

Table 2.

Diseases of the respiratory system in the regions, rates per 100,000 population, Georgia, 2005

	All ages				In children			
	Total number of registered cases	Prevalence rate	Total number of new cases	Incidence rate	Total number of registered cases	Prevalence rate	Total number of new cases	Incidence rate
Diseases of the respiratory system	328,310	7,510.2	249,115	5,698.6	177,023	19,326.8	151,521	16,542.6
	Including							
Chronic pharyngitis, nasopharyngitis, sinusitis	22,587	516.7	10,228	234.0	5,893	643.4	2,457	268.2
Chronic diseases of tonsils and adenoids	26,399	603.9	9,126	208.8	14,855	1,621.8	5,129	560.0
Allergic rhinitis	8,314	190.2	4,257	97.4	2,704	295.2	1,496	163.3
Pneumonia	17,625	403.2	16,009	366.2	5,985	653.4	5,437	593.6
Unspecified chronic bronchitis, emphysema	19,548	447.2	6,857	156.9	2,642	288.4	1,172	128.0
Bronchial asthma	15,269	349.3	3,482	79.6	2,285	249.5	643	70.2
Other obstructive pulmonary diseases	5,813	133.0	2,591	59.3	1,690	184.5	1,315	143.6
Other respiratory diseases	81,122	1,855.7	67,913	1,553.5	49,433	5,396.9	43,650	4,765.6

Table 3.

Diseases of the respiratory system, hospitalization and case fatality, Georgia, 2005

	All ages			In children					
	Total number of hospital discharges	Hospitalization rate per 100,000 population	Case fatality rate (%)	0 - 14 years of age			Under 1 year of the age		
				Total number of hospital discharges	Hospitalization rate per 100,000 population	Case fatality rate (%)	Total number of hospital discharges	Hospitalization rate per 100,000 population	Case fatality rate (%)
Diseases of the respiratory system	44,406	1,015.8	0.5	33,054	3,608.7	0.2	9,504	20,584.1	0.6
	Including								
Acute respiratory infections	14,021	320.5	0.5	12,706	1,386.2	0.1	3,892	8,610.6	0.1
Including: acute bronchitis	4,976	113.8	0.1	4,445	485.2	0.02	1,291	2,856.2	0.0
acute bronchiolitis	569	13.0	0.04	540	58.8	0.2	261	577.4	0.4
Pneumonia	11,730	267.0	0.2	8,580	936.7	0.2	3,042	6,730.1	0.4
Including: bronchopneumonia	3,376	76.8	0.5	2,541	277.1	0.1	1,073	2,373.9	0.2
Chronic and unspecified bronchitis, emphysema	366	8.3	0.6	143	15.6	0.0	4	8.8	0.0
Bronchial asthma	1,487	33.7	0.8	368	40.2	0.0	5	11.1	0.0
Other obstructive pulmonary diseases	510	11.5	0.8	117	12.7	0.8	7	15.5	0.0
Other diseases of the respiratory system	3,434	77.1	1.8	2,192	235.8	1.4	555	1,227.9	3.8