

HEALTH STATUS PROFILES

In 2005, the total number of encounters for medical care to the primary health care facilities equaled to 2.1 per person per year. This means that the total number of encounters in 2005 increased by 9.9% in the comparison with 2004. Despite this growth the occupancy rate of the primary health care facilities is still low and equals 38.0%.

A comparison with the previous years shows a growth since 1997 of the registered incidence rates in all classes of diseases.

In 2005, the total number of registered cases of infectious and parasitic diseases decreased by 2.8% in the comparison with 2004; 58% of all cases in this class of diseases are registered in children.

Despite the fact that the total number of registered cases of diphtheria in 2005 has reduced (incidence rate reached 0.2 per 100,000 population); the number of the cases in children increased twice.

Eighteen cases of amoebiasis were registered, including 4 cases in children. 761 cases of bacterial foodborne intoxications were registered, in 167 cases this kind of intoxications was revealed in children.

The number of registered cases of botulism has been decreased: 19 cases in 2005 against 41 cases in 2004.

In 2005, the number of registered cases of measles decreased in adults and in children as well. In the comparison with 2004 the general incidence rate per 100,000 population changed from 160.9 to 31.1 and in children from 456.3 to 65.3.

The registered number of rubella also sufficiently reduced: incidence rate per 100,000 population 42.1 in 2005 against 96.4 in 2004.

Since 2003 malaria incidence rate per 100,000 population was reducing: 7.3 in 2003, 5.9 in 2004, and 3.5 in 2005.

Visceral leishmaniasis had the opposite tendency for the same time period: 103 registered cases in 2003, 125 cases in 2004, and 161 cases in 2005.

In 2005, there were registered 10 cases of rabies. 42,132 patient encountered medical facilities for anti rabies care; this number is 5,654 more than in 2004. 96% of this persons received referral for the anti rabies vaccination; 52.4% received conditional course of the anti rabies vaccination and 31.7% non-conditional course.

In the comparison with 2004, the registered number of cases of influenza increased by 1.3 times; the number of cases of acute respiratory infections also increased (by 1.6 times).

The tendency for a reduction continued for the meningococcal infection: 65 registered cases in 2003, 46 cases in 2004, and 26 cases in 2005.

There were revealed 8 cases of the acute flaccid paralysis, this means that the polio surveillance indicator has been still at the level recommended by the World Health Organization.

In 2005, a tendency for a growth was revealed in the incidence and prevalence of tuberculosis. This tendency is registered for pulmonary and extra pulmonary types of tuberculosis.

Tuberculosis incidence rate is high in the following regions of Georgia: Ajara – 163.3, Samegrelo – 111.4, Guria – 110.9, and Tbilisi – 101.7. High incidence of the pulmonary tuberculosis is registered in Ajara – 116.8.

Cases of the extra pulmonary tuberculosis make up 27% from the total number of new cases of tuberculosis. Tuberculosis pleurisy (51.9%) and tuberculosis peripheral lymphadenopathy (30.9%) are leading in the distribution of the extra pulmonary tuberculosis cases.

From the total number of cases of tuberculosis meningitis (44), 16 cases were registered in children.

By the end of 2005, in total 671 cases of HIV infection were registered in Georgia, including 155 in female and 516 in male. The total number includes 472 cases of HIV and 199 cases of AIDS. In 2005, 242 new cases were revealed, including 162 HIV cases and 80 AIDS cases.

The total number of new cases of HIV infection is 32.6% more than in 2004. 191 patients died in 2005. 128 cases from the total number of new cases (242) or 52% are in the intra venous drug users, 93 cases (38.4%) are caused by sexual contacts with HIV patients. From the cases, transmitted by the sexual way, 91.4% are heterosexual contacts.

There are registered 7 cases of a vertical transmission of HIV infection from a mother to a baby.

There were 17,071 cases of hospitalizations caused by the infectious and parasitic diseases, including 9,963 cases in children. 69.5% from the children hospitalizations were due to intestinal infectious diseases. In the comparison with 2004, the hospital case fatality rate in the class of infectious and parasitic diseases decreased for adults and for children.

In 2005, increased numbers of registered cases with serious forms of cardiac vascular pathologies and arterial hypertension caused the tendency for a growth in the class of diseases of the circulatory system. In the out-patient system there were registered 28,884 cases of hospitalization due to this class of diseases, with the case fatality rate of 6.8%.

The total number of patients hospitalized with acute myocardial infarction constitutes 3,984; 1,791 patients (49.6%) were transferred to the hospital during the first 24 hours from the onset of the disease, which gives a good chance for the appropriate management of the case.

In 2005, 1,150 surgical operations on the heart were performed, the case fatality rate equals to 3.1%; 290 such operations were performed in children (the case fatality rate – 7.2%).

Enlargement of the thyroid gland and unspecified goiter are the main causes of the increased number of registered cases in the class of endocrine, nutritional and metabolic diseases. These pathologies make up to 39.7% of prevalent and 43.2% of incident cases. In 2005, according to the health institutions reports, 59,442 patient encountered health services for a medical care, including 14,146 children.

By the end of 2005, 55,080 patients with diabetes mellitus were registered, 15,203 cases (27.6%) of this number are insulin dependent and 39,877 cases (72.4%) – insulin independent.

By the end of 2005, 29,241 patients with neoplasms were enrolled at the health care system. 6,045 new cases of neoplasms were revealed during the year, including 54.1% in females and 45.8% in males.

A slight decrease of new cases with the forth stage of the disease were registered in 2005. Despite of this decrease the percentage of the cases with this stage is still high – 42%.

Cancers of breast (34.9%), genital organs (26.2%) and the digestive system (15.5%) are leading in the distribution of new cases of malignant neoplasms for females.

Cancers of respiratory and intrathoractic organs (32.5%), digestive organs (25.2%) and genital organs (9.7%) are leading in the distribution of new cases of malignant neoplasms for males.

In 2005, 4,559 patients with cancer died. 34.2% of patients died in the first year after the diagnosing of a malignant neoplasm. 47.3% of the enrolled patients with malignant neoplasms are surviving five or more years.

In 2005, the total number of hospitalizations due to neoplasms constituted 9,123 cases. 659 cases of such hospitalizations were in children. The case fatality rate for all hospitalization is 2.5% and in children – 1.1%.

From the total number of cases of neoplasms revealed by a preventive screening (249), 153 cases had the first and second stages of the disease.

Incidence and prevalence rates of diseases of the respiratory system are traditionally high in Georgia, especially in children. 60.8% of all registered in this class of diseases new cases are diagnosed in children.

There were registered 44,406 cases of hospitalization caused by the respiratory system diseases with the case fatality rate of 0.5%; the number of hospitalizations includes 33,054 cases in children (the case fatality rate – 0.2%).

Since 2002, the incidence rate of injuries, poisonings and other consequences of the external causes was stable. In 2005, the incidence of burns and poisonings by drugs, medicaments and biological substances reduced in the comparison with 2004.

In 2005, the total number of hospitalizations caused by injuries, poisonings and other consequences of the external causes has increased by 11.4%. The case fatality rate decreased in all patients (from 3.2% in 2004 to 2.9% in 2005) and in children (from 0.9% in 2004 to 0.5% in 2005).

Certain Infectious and Parasitic Diseases

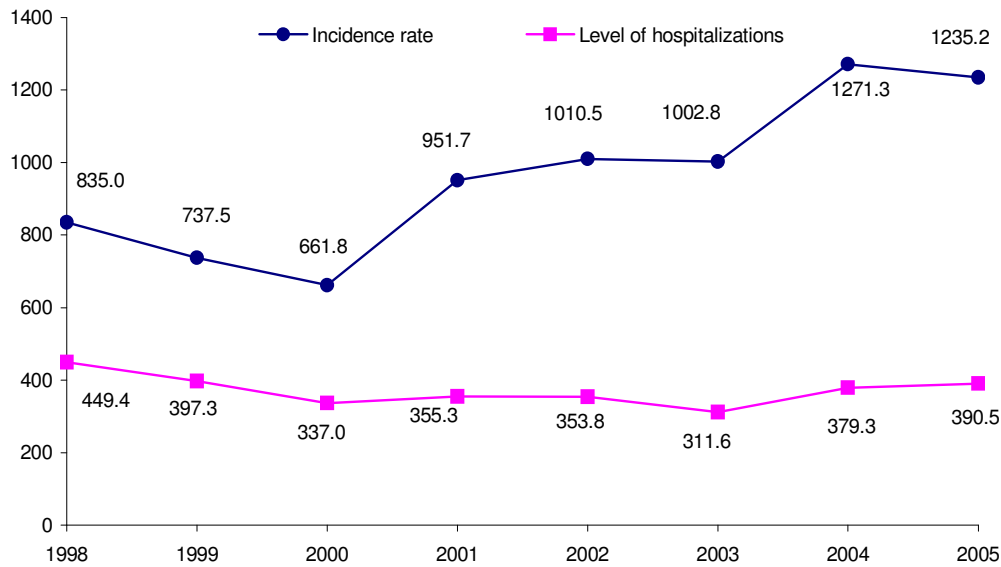


Figure 1. Certain infectious and parasitic diseases, incidence rate and level of hospitalizations per 100,000 population, Georgia, 1998 – 2005

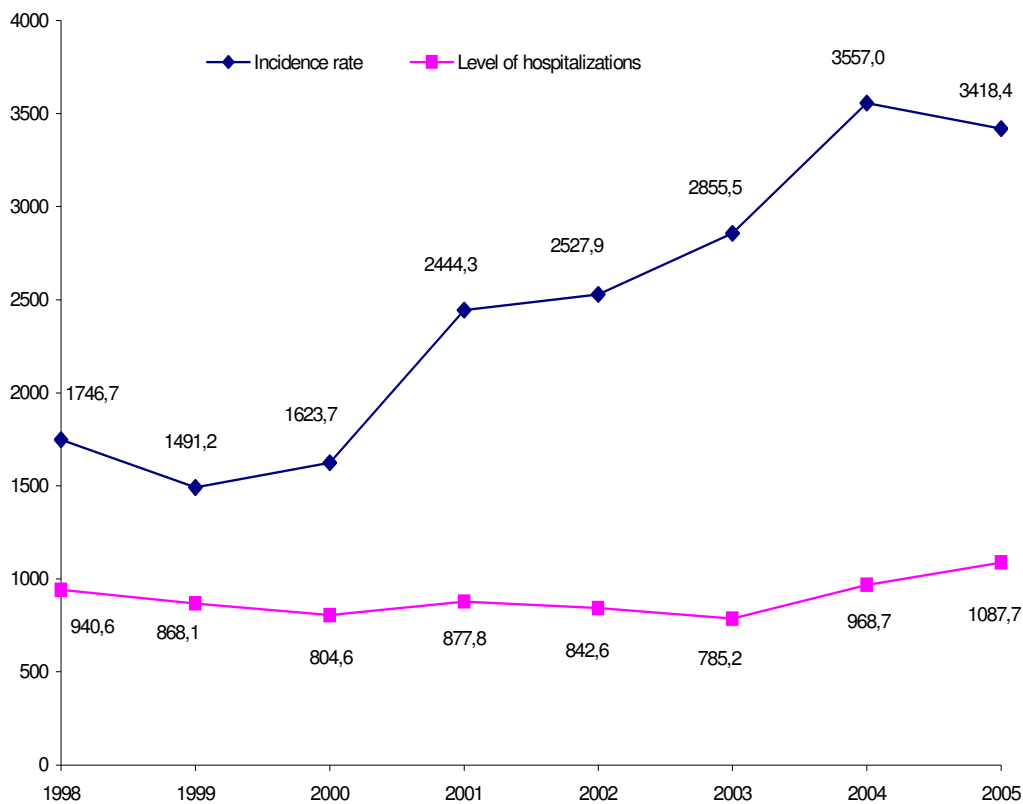


Figure 2. Certain infectious and parasitic diseases, incidence rate and level of hospitalizations in children, per 100,000 children, Georgia, 1998 – 2005

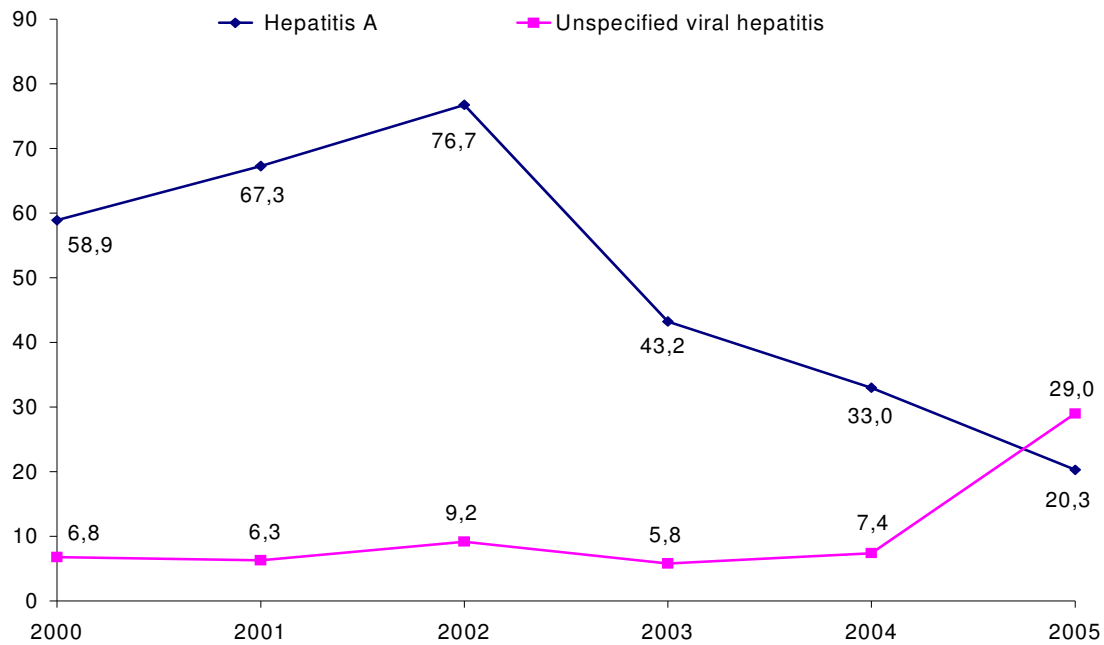


Figure 3 . Incidence of viral Hepatitis A and unspecified viral hepatitis, rates per 100,000 population, Georgia, 2000 - 2005

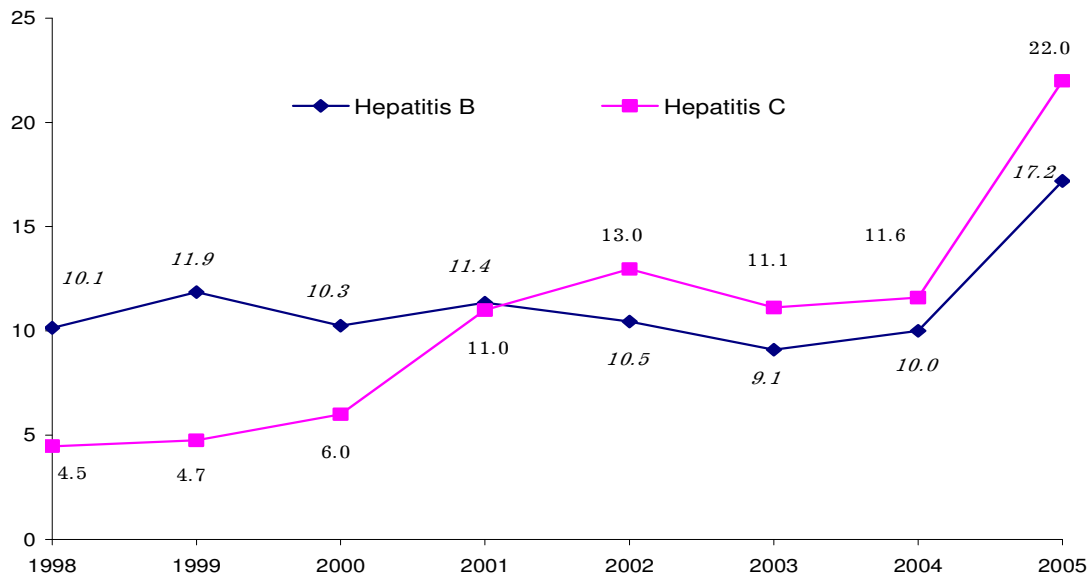


Figure 4 . Incidence of viral Hepatitis B and C, rates per 100,000 population, Georgia, 1998 - 2005

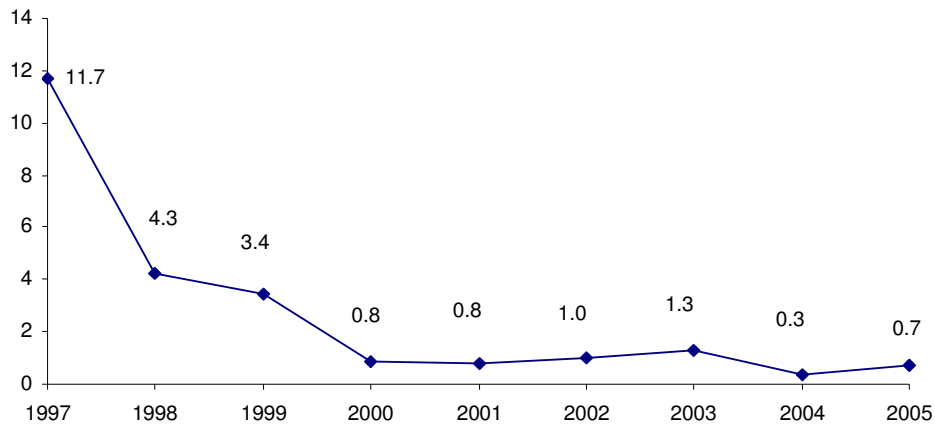


Figure 5. Incidence of diphtheria in children, rate per 100,000 children, Georgia, 1997 - 2005

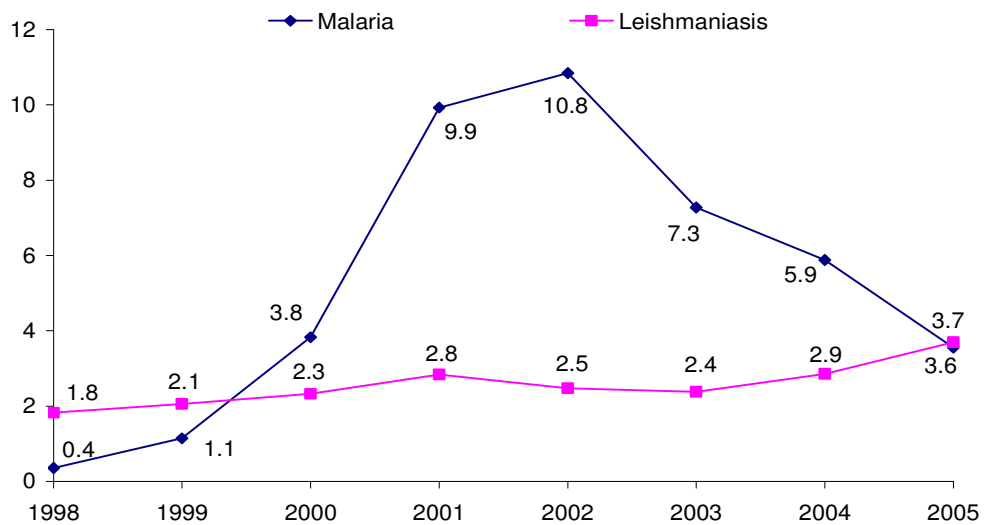


Figure 6. Incidence of malaria and visceral leishmaniasis, rates per 100,000 population, Georgia, 1998 - 2005

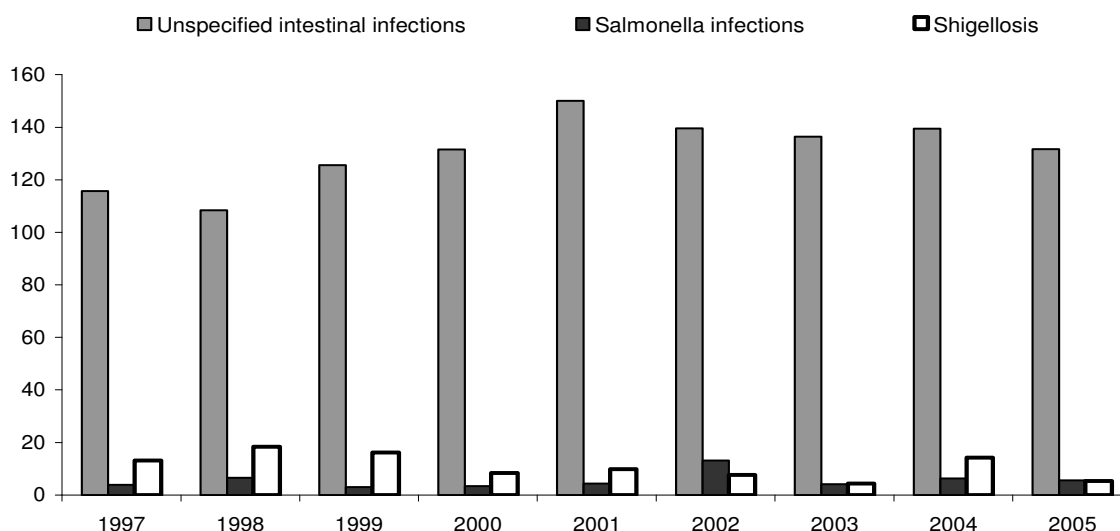


Figure 7 . Incidence of certain foodborne and waterborne infections, rates per 100,000 population, Georgia, 1997 – 2005

Table 1.
Certain infectious and parasitic diseases, incidence rate per 100,000 population, Georgia, 2004 -2005

	2004				2005			
	All ages		In children		All ages		In children	
	Number of cases	Incidence rate per 100,000 population	Number of cases	Incidence rate per 100,000 children	Number of cases	Incidence rate per 100,000 population	Number of cases	Incidence rate per 100,000 children
Abkhazia	7,213	--	5,636	--	10,831	--	8,614	--
Ajara	3,737	993.8	2,087	2,309.9	3,905	1,038.5	2,377	2,630.9
Tbilisi	15,867	1,466.9	10,192	4,840.9	12,894	1,192.0	6,937	3,294.9
Kakheti	2,628	645.4	1,703	2,007.8	2,479	608.8	1,643	1,937.0
Imereti	4,873	696.5	2,384	1,753.8	4,084	583.7	2,307	1,697.2
Samegrelo	5,842	1,253.4	2,624	2,817.4	4,971	1,066.5	1,931	2,073.3
Shida Kartli	3,778	1,203.0	2,658	3,881.5	3,481	1,108.5	2,105	3,074.0
Kvemo Kartli	4,442	892.8	2,162	1,793.2	4,362	876.7	2,105	1,745.9
Guria	1,524	1,063.1	927	3,281.0	1,963	1,369.3	986	3,489.8
Samtskhe – Javakheti	1,939	934.0	967	1,967.4	1,623	781.8	766	1,558.5
Mtskheta – Mtianeti	2,852	2,273.5	1,024	3,946.8	2,840	2,264.0	1,373	5,292.0
Racha – Lechkhumi and Kvemo Svaneti	234	459.1	87	1,040.9	390	765.2	167	1,998.1
Departments other than the MOLHSA	648	--	129	--	176	--	0	--
Georgia	55,577	1,271.3	32,580	3,557.0	53,999	1,235.2	31,311	3,418.4

Table 2.
Certain infectious and parasitic diseases, Georgia, 2004 - 2005

	2004				2005			
	All ages		In children		All ages		In children	
	Number of cases	Incidence rate per 100,000 population	Number of cases	Incidence rate per 100,000 population	Number of cases	Incidence rate per 100,000 population	Number of cases	Incidence rate per 100,000 population
Cholera	0	0.0	0	0.0	0	0.0	0	0.0
Typhoid and paratyphoid fevers A,B,C	1	0.02	1	0.1	0	0.0	0	0.0
Other salmonella infections	276	6.3	102	11.1	344	7.9	112	12.2
Shigellosis	617	14.1	273	29.8	310	7.1	165	18.0
Other specified bacterial intestinal infections	709	16.2	539	58.8	1072	24.5	734	80.1
Including: Escherichia coli infection	553	12.7	412	45.0	787	18.0	503	54.9
Yersinia enterocolitica infection	1	0.02	1	0.1	3	0.1	2	0.2
Other bacterial foodborne intoxications	408	9.3	96	10.5	761	17.4	167	18.2
Including: Botulism	41	0.9	5	0.5	19	0.4	5	0.5
Amoebiasis	51	1.2	29	3.2	18	0.4	4	0.4
Diarrhoea and gastroenteritis of presumed infectious origin	6,035	138.1	4299	469.4	7,431	170.0	5,195	567.2
Plague	0	0.0	0	0.0	0	0.0	0	0.0
Tularemia	3	0.1	0	0.0	0	0.0	0	0.0
Anthrax	45	1.0	0	0.0	19	0.4	0	0.0
Brucellosis (new cases)	152	3.5	14	1.5	129	3.0	14	1.5
Leptospirosis	10	0.2	1	0.1	6	0.1	0	0.0
Listeriosis	0	0.0	0	0.0	0	0.0	0	0.0
Tetanus neonatorum	0	0.0	0	0.0	0	0.0	0	0.0
Other tetanus	7	0.2	0	0.0	2	0.04	0	0.0
Diphtheria	12	0.3	3	0.3	10	0.2	6	0.7
Whooping cough	207	4.7	178	19.4	167	3.8	148	16.2
Scarlet fever	302	6.9	284	31.0	441	10.1	417	45.5
Meningococcal infection	46	1.1	34	3.7	26	0.6	19	2.1
Relapsing fever	0	0.0	0	0.0	0	0.0	0	0.0
Lyme disease	1	0.02	0	0.0	0	0.0	0	0.0
Typhus fever	0	0.0	0	0.0	0	0.0	0	0.0
Q fever	0	0.0	0	0.0	0	0.0	0	0.0
Acute flaccid paralysis	8	0.2	8	0.9	8	0.2	8	0.9
Rabies	12	0.3	3	0.3	10	0.2	3	0.3
Virus infections of central nervous system	41	0.9	27	2.9	90	2.1	44	4.8
Arthropod-borne viral fevers and viral haemorrhagic fevers	0	0.0	0	0.0	0	0.0	0	0.0
Influenza	11,399	260.8	4,542	495.9	1,4251	326.0	5,565	607.6
Pneumonia due to Haemophilus influenzae	0	0.0	0	0.0	1	0.02	1	0.1
Acute upper respiratory infections	120,659	2760.1	81,458	8,893.3	195,542	4,473.1	132,585	14,475.2
Varicella	3,432	78.5	3,015	329.2	3,608	82.5	3,250	354.8
Measles	7,033	160.9	4,179	456.3	1,358	31.1	598	65.3
Rubella	4,215	96.4	3,638	397.2	1,842	42.1	1,596	174.2
Congenital rubella syndrome	1	0.02	1	0.1	1	0.02	1	0.1
Viral hepatitis	2,724	62.3	845	92.3	3,869	88.5	1,123	122.6
Including: A	1,448	33.1	705	77.0	889	20.3	507	55.4
B	442	10.1	24	2.6	751	17.2	23	2.5
C	510	11.7	8	0.9	961	22.0	3	0.3
Other viral hepatitis (E, D and unspecified)	324	7.4	108	11.8	1268	29.0	590	64.4
Cytomegaloviral disease	6	0.1	0	0.0	105	2.4	0	0.0
Mumps	134	3.1	102	11.1	111	2.5	91	9.9
Infectious mononucleosis	49	1.1	38	4.1	55	1.3	36	3.9
Malaria (new cases)	257	5.9	56	6.1	155	3.5	28	3.1
Leishmaniasis	126	2.9	92	10.0	161	3.7	129	14.1
Echinococcosis	56	1.3	0	0.0	67	1.5	7	0.8
Trichinellosis	149	3.4	15	1.6	256	5.9	25	2.7
Ascariasis	5,966	136.5	5,094	556.1	7,731	176.8	6,272	684.8
Enterobiasis	14,414	329.7	12,964	1,415.4	15,964	365.2	13,801	1,506.8

Table 3.

Infectious and parasitic diseases, hospitalizations and case fatality, Georgia, 2004 - 2005

	2004					2005				
	All ages		In children under 15 years of age			All ages		In children under 15 years of age		
	Number of discharges	Case fatality rate %	Number of discharges	Case fatality rate %		Number of discharges	Case fatality rate %	Number of discharges	Case fatality rate %	
			In all children	In infants				In all children	In infants	
All cases of Infectious and parasitic diseases	16,580	1.4	8,873	0.9	2.0	17,071	1.1	9,963	0.5	1.2
	Including:									
Intestinal infections	7,561	0.3	5,796	0.3	0.7	8,655	0.2	6,934	0.2	0.5
Pulmonary tuberculosis	2,309	1.4	226	0.9	0	2,134	1.8	166	0	0
Sepsis	528	11.2	359	7.8	10.2	531	7.7	371	5.4	6.6
Viral hepatitis	1,887	2.2	363	0.8	7.7	1,960	1.7	416	0	0

Table 4.

Infectious and parasitic diseases, hospitalizations and case fatality rates by regions, Georgia, 2003 - 2005

	2003		2004		2005	
	Hospitalization level per 100,000 population	Case fatality rate %	Hospitalization level per 100,000 population	Case fatality rate %	Hospitalization level per 100,000 population	Case fatality rate %
Ajara	363.1	2.9	398.4	1.9	468.1	1.8
Tbilisi	531.6	3.1	688.3	2.2	767.5	1.3
Kakheti	131.2	0.8	107.3	0.7	86.7	0.6
Imereti	360.3	0.9	441.8	0.6	458.5	0.7
Samegrelo	141.4	0.8	153.6	1.0	138.2	1.2
Shida Kartli	84.9	3.0	72.3	1.3	105.7	0.3
Kvemo Kartli	136.8	0.7	180.7	0.1	211.8	0.3
Guria	163.3	0	240.0	0	249.0	0
Samtskhe-Javakheti	482.7	0.4	545.8	0.2	403.7	0.4
Mtskheta-Mtianeti	47.5	0	29.5	0	0	0
Racha-Lechkhumi and Kvemo Svaneti	478.3	0	725.9	0	408.1	0
Georgia	311.6	1.9	379.3	1.4	390.5	1.1

Pulmonary and Extra pulmonary Tuberculosis

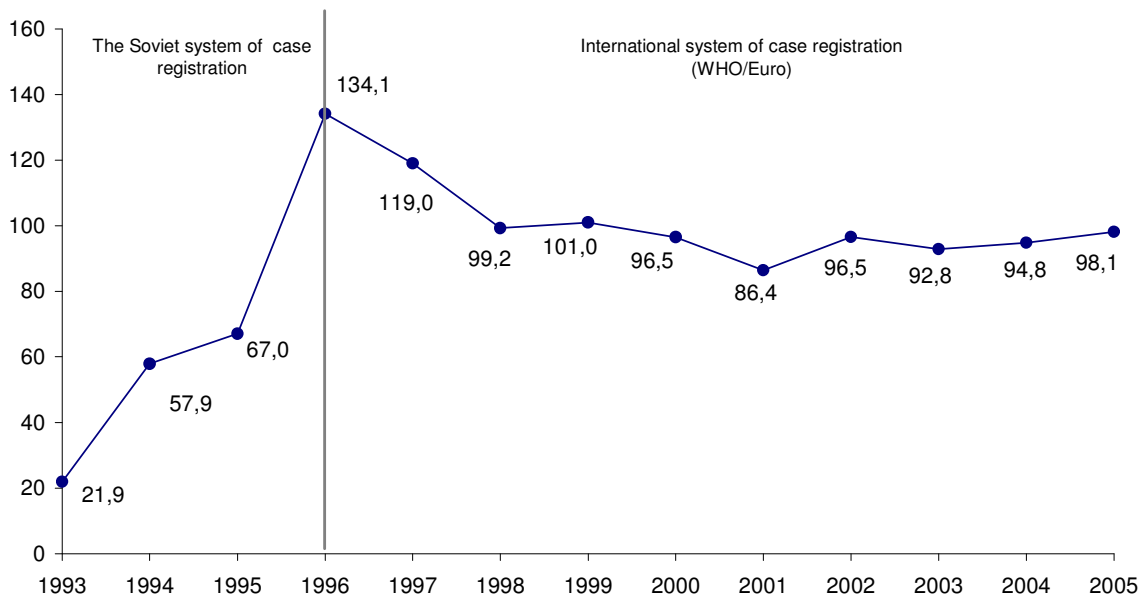


Figure 1. Registered incidence of tuberculosis (rate per 100,000 population), Georgia, 1993 – 2005

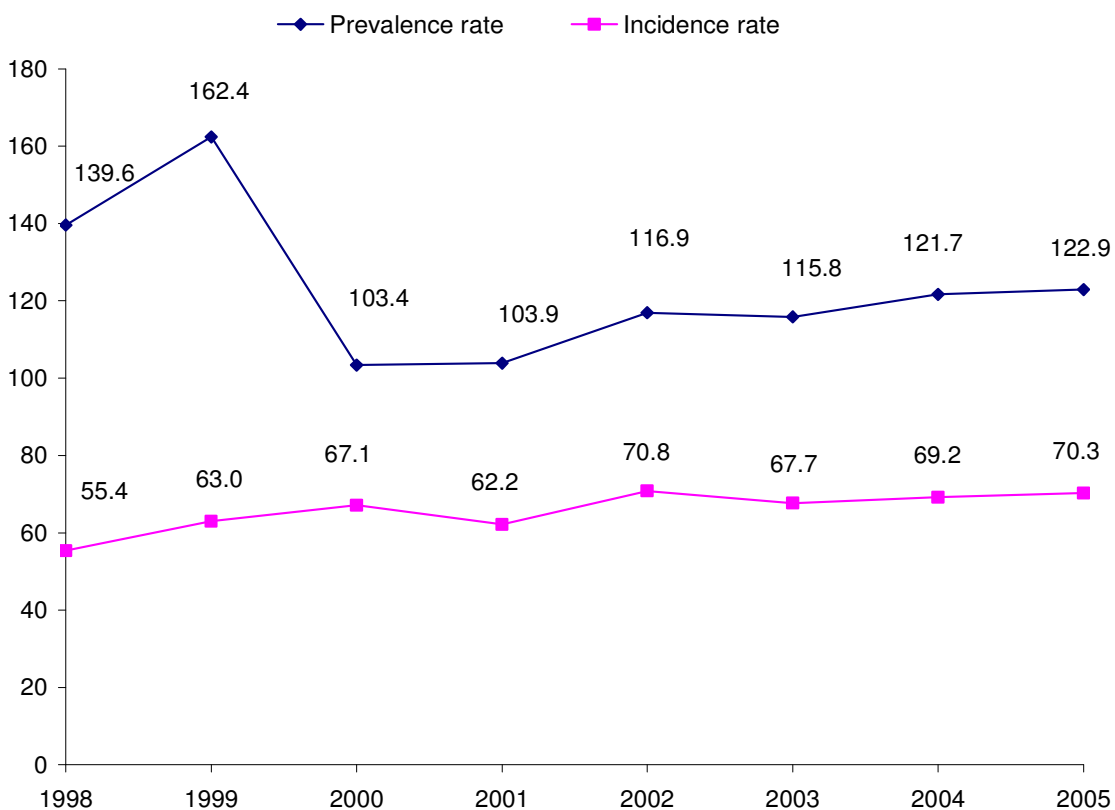


Figure 2. Pulmonary tuberculosis morbidity, rates per 100,000 population, Georgia, 1998 – 2005

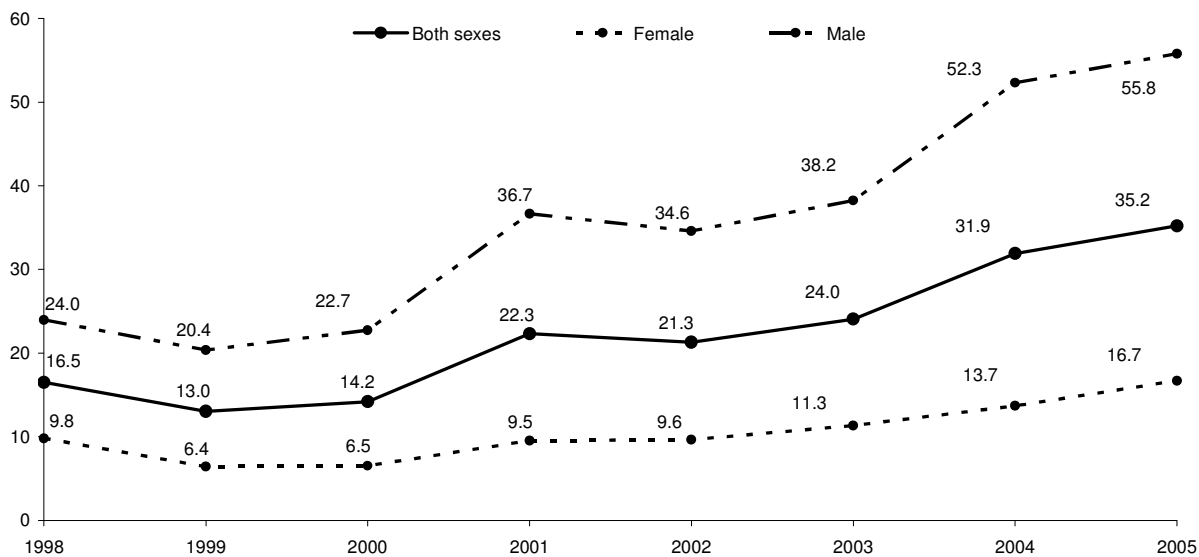


Figure 3. Distribution of new cases of bacteriologically positive pulmonary tuberculosis by sex, Georgia, 1998 - 2005

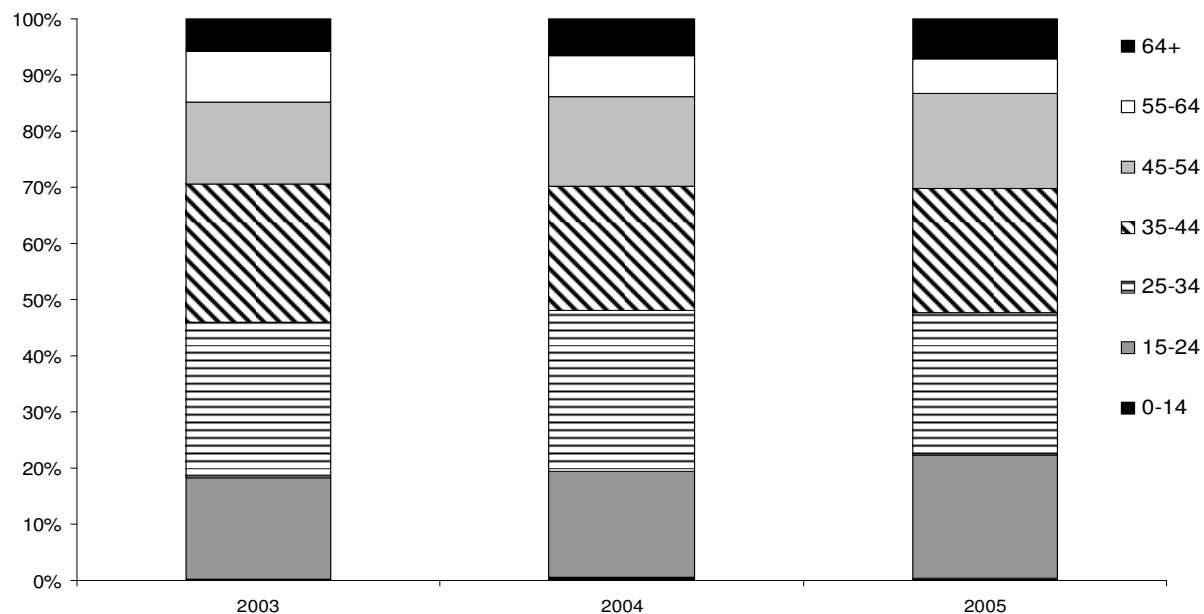


Figure 4. Distribution of new cases of pulmonary bacteriologically positive tuberculosis by age groups (in percent), Georgia, 2003 – 2005

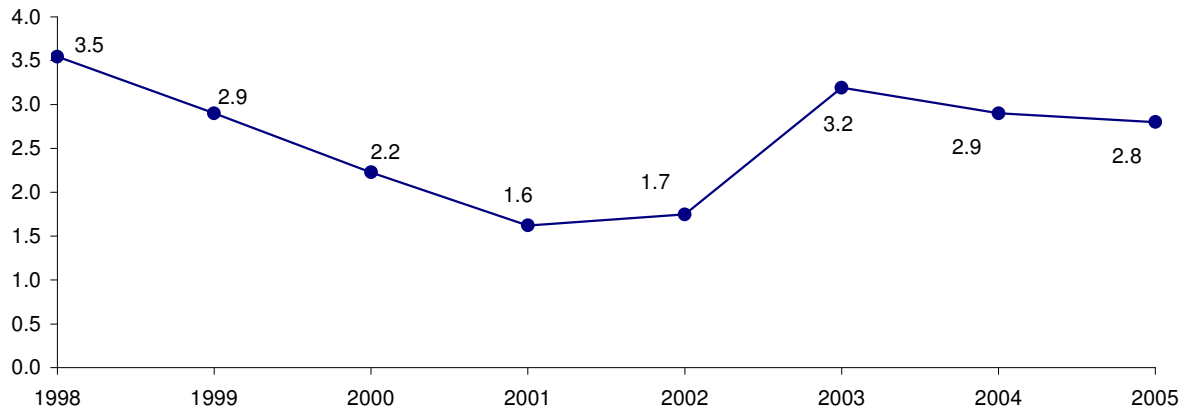


Figure 5. Incidence of the tuberculosis meningitis in children, rate per 100,000 children, Georgia, 1998 – 2005

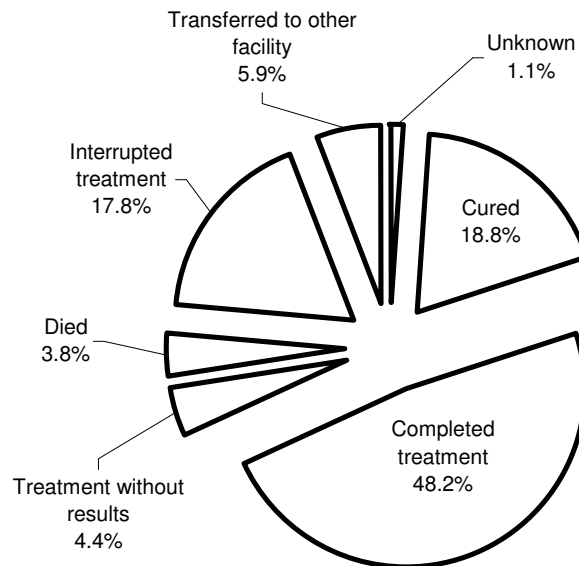


Figure 6. Results of treatment of new bacteriologically positive cases registered 12 months before the assessment (according to the WHO recommended indicator), Georgia, 2005

Table 1.

Tuberculosis morbidity, Georgia, 2004 – 2005

	2004				2005			
	Registered cases		Including new cases		Registered cases		Including new cases	
	Total number	Rate per 100,000 population	Total number	Rate per 100,000 population	Total number	Rate per 100,000 population	Total number	Rate per 100,000 population
Ajara	795	211.4	569	151.3	897	238.6	614	163.3
Tbilisi	1,871	173.0	1,193	110.3	1,739	160.8	1,100	101.7
Kakheti	425	104.4	288	70.7	423	103.9	277	68.0
Imereti	824	117.8	543	77.6	876	125.2	579	82.8
Samegrelo	796	170.8	493	105.8	865	185.6	519	111.4
Shida Kartli	394	125.5	264	84.1	324	103.2	214	68.1
Kvemo Kartli	592	119.0	311	62.5	615	123.6	370	74.4
Guria	185	129.0	140	97.7	220	153.5	159	110.9
Samtskhe – Javakheti	140	67.4	77	37.1	179	86.2	132	63.6
Mtskheta – Mtianeti	147	117.2	90	71.8	162	129.1	88	70.2
Racha – Lechkumi and Kvemo Svaneti	59	115.8	40	78.5	39	76.5	23	45.1
Departments other than the MOLHSA	317	-	139	-	357	--	215	--
Georgia	6,543	149.7	4,145	94.8	6,696	153.2	4,290	98.1

Table 2.

Pulmonary tuberculosis, Georgia, 2004 – 2005

	2004				2005			
	Registered cases		Including new cases		Registered cases		Including new cases	
	Total number	Rate per 100,000 population	Total number	Rate per 100,000 population	Total number	Rate per 100,000 population	Total number	Rate per 100,000 population
Ajara	620	164.9	403	107.2	718	190.9	439	116.8
Tbilisi	1,521	140.6	869	80.3	1,425	131.7	813	75.2
Kakheti	321	78.8	192	47.2	334	82.0	194	47.6
Imereti	650	92.9	392	56.0	684	97.8	403	57.6
Samegrelo	658	141.2	366	78.5	681	146.1	350	75.1
Shida Kartli	323	102.9	197	62.7	255	81.2	150	47.8
Kvemo Kartli	503	101.1	238	47.8	474	95.3	247	49.6
Guria	142	99.1	97	67.7	177	123.5	122	85.1
Samtskhe – Javakheti	107	51.5	48	23.1	130	62.6	87	41.9
Mtskheta – Mtianeti	126	100.4	70	55.8	140	111.6	68	54.2
Racha – Lechkumi and Kvemo Svaneti	50	98.1	31	60.8	30	58.9	15	29.4
Departments other than the MOLHSA	297	-	123	-	325	--	187	--
Georgia	5,318	121.7	3,026	69.2	5,373	122.9	3,075	70.3

Table 3.
New cases of pulmonary tuberculosis according to the results of the bacteriological confirmation, Georgia, 2004 - 2005

	2004			2005		
	Bacteriologically positive	Bacteriologically negative	Not confirmed bacteriologically	Bacteriologically positive	Bacteriologically negative	Not confirmed bacteriologically
Ajara	132	240	31	161	265	13
Tbilisi	360	478	31	358	441	14
Kakheti	88	103	1	86	107	1
Imereti	218	170	4	241	155	7
Samegrelo	184	173	9	177	164	9
Shida Kartli	103	88	6	89	55	6
Kvemo Kartli	111	108	19	157	81	9
Guria	42	55	0	46	76	0
Samtskhe – Javakheti	10	37	1	13	73	1
Mtskheta – Mtianeti	31	34	5	28	39	1
Racha – Lechkhumi and Kvemo Svaneti	12	18	1	8	5	2
Departments other than the MOLHSA	104	18	1	173	13	1
Georgia	1,395	1,522	109	1,537	1,474	64

Table 4.
New cases of extra pulmonary tuberculosis, Georgia, 2004 - 2005

	2004			2005		
	Total number of cases	Incidence rate per 100,000 population	Percent of new cases of extra pulmonary tuberculosis from the total number of new cases of tuberculosis	Total number of cases	Incidence rate per 100,000 population	Percent of new cases of extra pulmonary tuberculosis from the total number of new cases of tuberculosis
Ajara	166	44.1	29.2	175	46.5	28.5
Tbilisi	324	30.0	27.2	287	26.5	26.1
Kakheti	96	23.6	33.3	83	20.4	30.0
Imereti	151	21.6	27.8	176	25.2	30.4
Samegrelo	127	27.2	25.8	169	36.3	32.6
Shida Kartli	67	21.3	25.4	64	20.4	29.9
Kvemo Kartli	73	14.7	23.5	123	24.7	33.2
Guria	43	30.0	30.7	37	25.8	23.3
Samtskhe – Javakheti	29	14.0	37.7	45	21.7	34.1
Mtskheta – Mtianeti	20	15.9	22.2	20	15.9	22.7
Racha – Lechkhumi and Kvemo Svaneti	9	17.7	22.5	8	15.7	34.8
Departments other than the MOLHSA	16	--	11.5	28	--	13.0
Georgia	1,119	25.6	27.0	1,215	27.8	28.3

Table 5.
Distribution of new cases of extra pulmonary tuberculosis by the site of infection, Georgia, 2000 - 2005

	2000	2001	2002	2003	2004	2005
	1290	1045	1127	1089	1086	1215
Total number of new cases						
	Percent from the total number of new cases					
Tuberculosis meningitis	3.2	4.9	1.7	5.0	2.1	3.5
Tuberculosis of bones and joints	2.6	3.5	4.3	5.1	8.7	7.6
Tuberculosis of genitourinary system	2.5	1.7	2.7	4.0	4.9	4.0
Tuberculosis pleurisy	40.5	45.8	48.2	46.0	48.0	51.9
Tuberculosis lymphadenopathy	45.0	42.2	41.1	35.8	32.1	30.9
Tuberculosis of other organs	6.2	1.8	2.1	4.0	4.1	2.1

Sexually Transmitted Infections

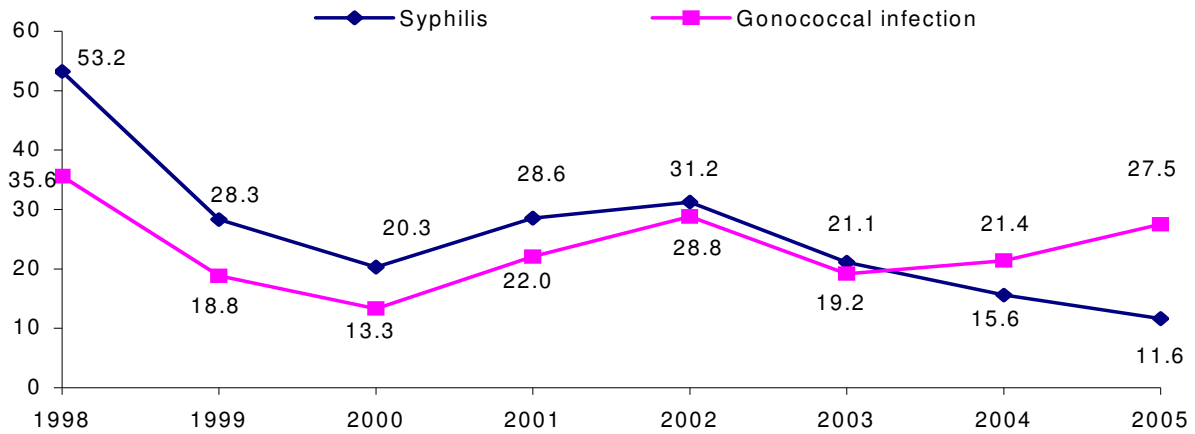


Figure 1. Incidence of syphilis and gonococcal infection, rates per 100,000 population, Georgia, 1998–2005

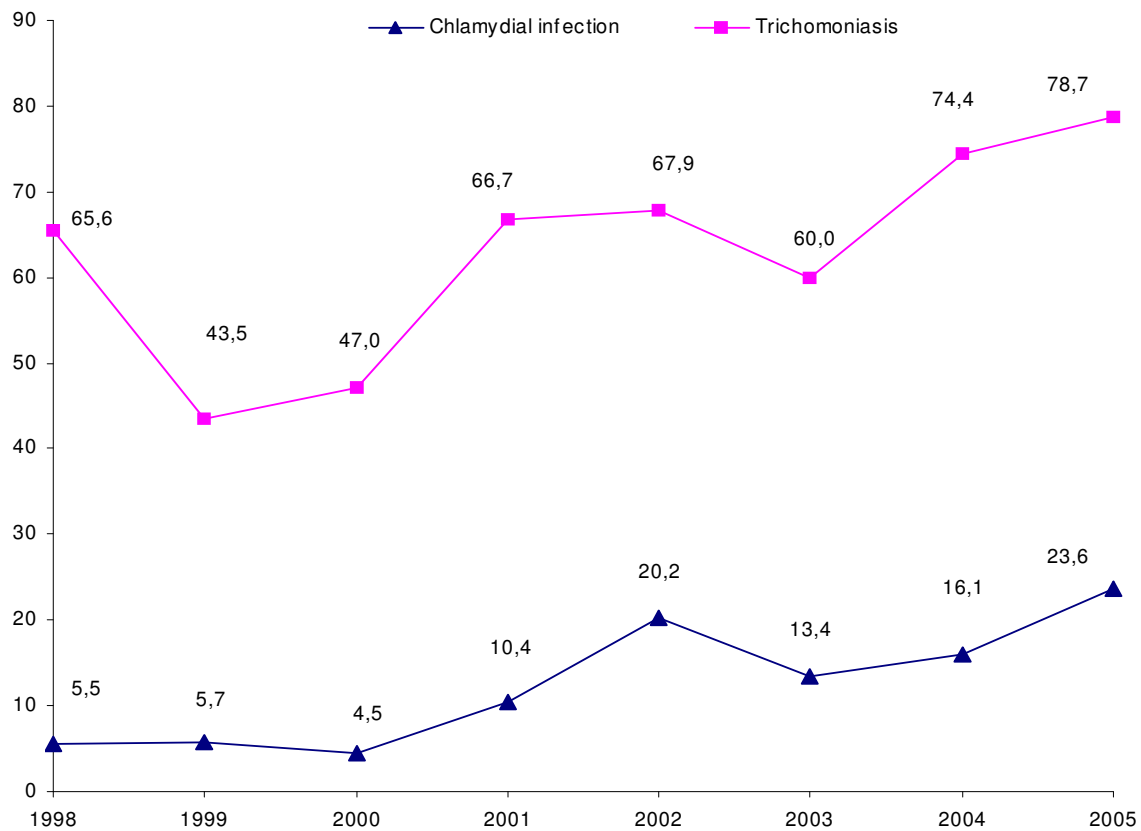


Figure 2. Incidence of chlamydial infection and trichomoniasis, rates per 100,000 population, Georgia, 1998 – 2005

Table 1.
New cases of sexually transmitted diseases by regions, Georgia, 2005

	Syphilis		Gonococcal infection		Correlation of syphilis toward gonococcal infection
	Number of cases	Incidence rate per 100,000 population	Number of cases	Incidence rate per 100,000 population	
Tbilisi	303	28.0	555	51.3	1:1.8
Ajara	27	7.2	59	15.7	1:2.2
Guria	5	3.5	6	4.2	1:1.2
Samegrelo	20	4.3	175	37.6	1:8.8
Imereti	53	7.6	102	14.6	1:1.9
Kakheti	21	5.2	99	24.3	1:4.7
Mtskheta – Mtianeti	9	7.2	35	27.9	1:3.9
Samtskhe – Javakheti	6	2.9	44	21.2	1:7.3
Kvemo Kartli	40	8.0	98	19.7	1:2.5
Shida Kartli	23	7.3	19	6.1	1:0.8
Racha-Lechkhumi and Kvemo Svaneti	1	2.0	0	0.0	1:0.0
Department other than the MOLHSA	1	-	10	-	1:0.0
Georgia	509	11.6	1,202	27.5	1:2.4

Table 2.
Distribution of registered cases of sexually transmitted diseases according to the age and sex groups, Georgia, 2005

	Sex	Age group											
		All ages		0 - 14		15 - 19		20 - 29		30 - 39		40 +	
		Number of cases	Incidence rate per 100,000 population	Number of cases	Incidence rate per 100,000 population	Number of cases	Incidence rate per 100,000 population	Number of cases	Incidence rate per 100,000 population	Number of cases	Incidence rate per 100,000 population	Number of cases	Incidence rate per 100,000 population
Syphilis all types	F	233	10.1	2	0.4	14	7.9	94	29.0	82	25.0	41	4.0
	M	276	13.4	4	0.8	30	16.7	103	32.8	83	28.0	56	7.0
Gonococcal infection	F	140	6.1	4	0.9	19	10.7	75	23.1	37	11.3	5	0.5
	M	1,062	51.5	6	1.3	187	104.0	589	187.4	230	77.5	50	6.3
Other venereal diseases	F	42	1.8	0	0.0	1	0.6	26	8.0	13	4.0	2	0.2
	M	44	2.1	0	0.0	18	10.0	16	5.1	7	2.4	3	0.4
Chlamydial infection	F	404	17.5	6	1.3	50	28.2	225	69.4	101	30.8	22	2.1
	M	626	30.4	1	0.2	120	66.7	324	103.1	140	47.2	41	5.1
Trichomoniasis	F	1,879	81.3	13	2.9	244	137.6	1,039	320.3	482	147.2	101	9.8
	M	1,561	75.7	1	0.2	208	115.7	880	280.0	357	120.3	115	14.4

Table 3.
Mycoses, Georgia, 2003 - 2005

	2003		2004		2005	
	Number of cases	Incidence rate per 100,000 population	Number of cases	Incidence rate per 100,000 population	Number of cases	Incidence rate per 100,000 population
All mycoses	5,126	118.8	5,489	125.6	7,010	160.4
	<i>Including:</i>					
Infection due to species of Trychophyton	387	9.0	517	11.8	591	13.5
Infection due to species of Microsporum	51	1.2	79	1.8	123	2.8
Candidiasis	3,212	74.2	3,310	75.7	3,423	78.3
Coccidioidomycosis	22	0.5	9	0.2	23	0.5
Histoplasmosis	11	0.3	23	0.5	4	0.1
Blastomycosis	7	0.2	40	0.9	97	2.2
Other mycosis	1,436	33.2	1,511	34.6	2,749	62.9

Table 4.

Akariasis (Itch), Georgia, 2003 - 2005

	Number of cases	Incidence rate per 100,000 population
2003	1,705	39.5
2004	2,139	48.9
2005	2,399	54.9

Table 5.

New cases of certain sexually transmitted diseases, Georgia, 2002 - 2005

	2002		2003		2004		2005	
	Number of cases	Incidence rate per 100,000 population	Number of cases	Incidence rate per 100,000 population	Number of cases	Incidence rate per 100,000 population	Number of cases	Incidence rate per 100,000 population
Syphilis all types	1,366	31.2	912	21.1	681	15.6	509	11.6
Gonococcal infection	1,259	28.8	832	19.2	935	21.4	1202	27.5
Chlamydial infection	891	20.4	584	13.5	704	16.1	1030	23.6
Trichomoniasis	2,969	67.9	2596	60.0	3,251	74.4	3440	78.7

Table 6.

Syphilis tests provided during antenatal care visits, Georgia, 2001 - 2005

	2001	2002	2003	2004	2005
Number of tested women	3527	36647	34844	32551	35264
Number of the revealed cases of syphilis	32	52	25	32	27
Percent of the revealed cases of syphilis from the total number of tested	0.91	0.14	0.07	0.10	0.08

HIV / AIDS

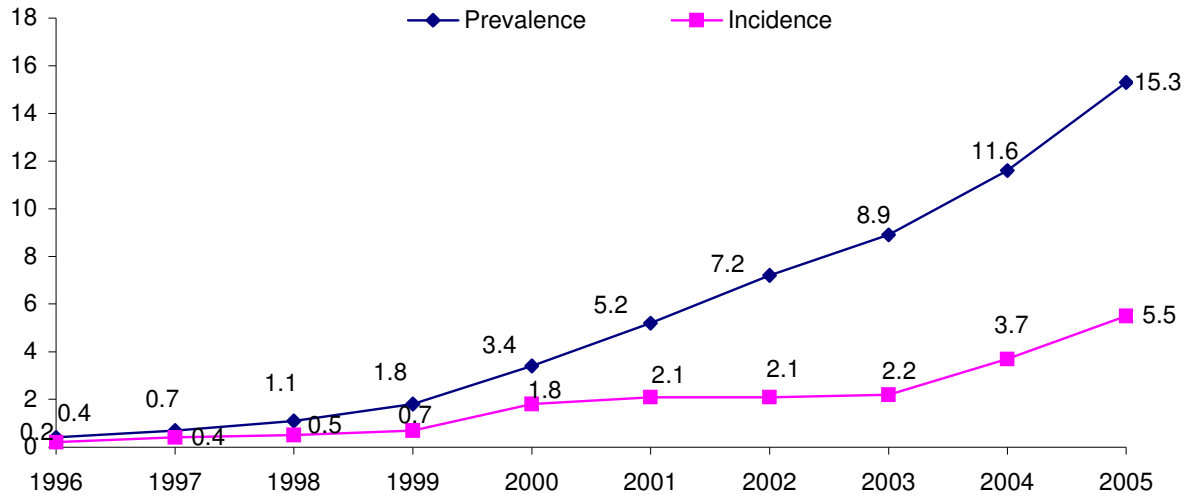


Figure 1. HIV / AIDS morbidity, rates, per 100,000 population, Georgia, 1996 - 2005

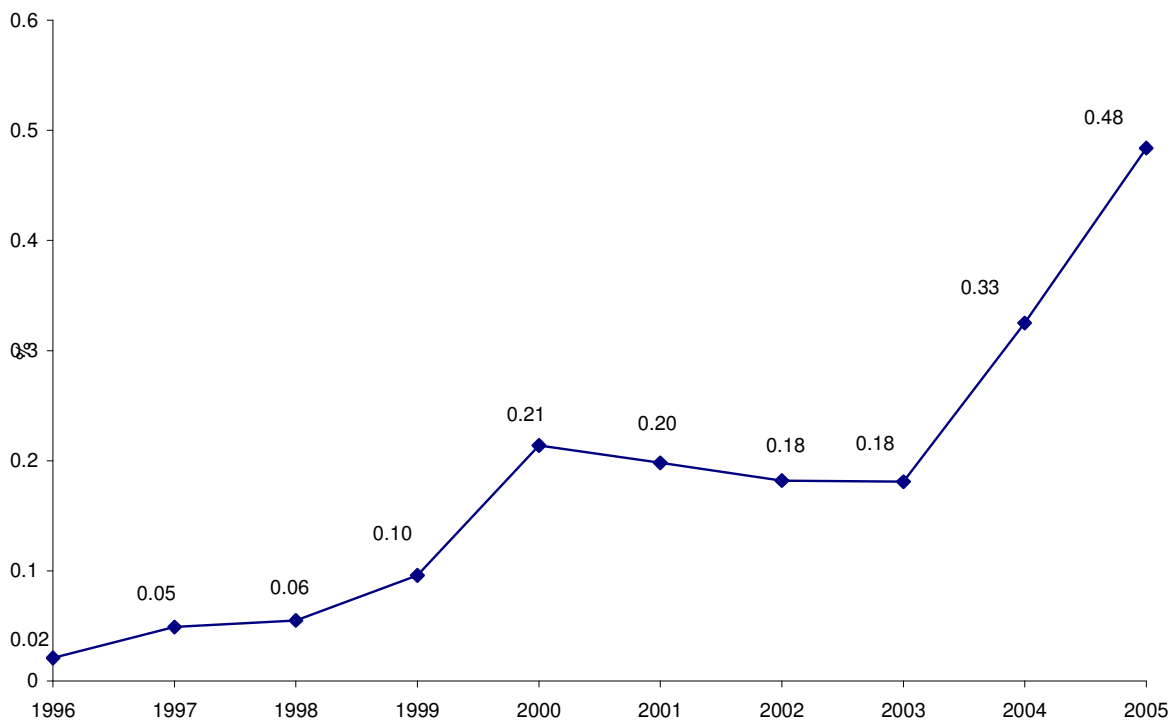


Figure 2. Percentage of the diagnosed HIV / AIDS cases from the total number of the screened population, Georgia, 1996 - 2005

Table 1.

HIV / AIDS morbidity, Georgia, 1998 – 2005

	1998	1999	2000	2001	2002	2003	2004	2005
Total number of registered cases by the end of the year	56	84	153	232	314	387	508	671
Prevalence rate per 100,000 population	1.2	1.9	3.4	5.3	7.2	8.9	11.6	15.3
Including new cases	25	34	79	93	93	94	163	242
Incidence rate per 100,000 population	0.6	0.8	1.8	2.1	2.1	2.2	3.7	5.5

Table 2.

Distribution of registered cases by sex and risk-groups, Georgia, 2005

Way of transmission	Sex	Total number of registered cases by the beginning of the year			Total number of new cases			Total number of the cases registered by the end of the year			Died in the current year
		All cases	Including		All cases	Including		All cases	Including		
			AIDS	HIV		AIDS	HIV		AIDS	HIV	
All cases		508	50	458	242	80	162	671	199	472	61
		<i>Including:</i>									
Intravenous drug users	F	4	0	4	0	0	0	4	1	3	
	M	340	44	296	128	52	76	417	126	291	41
Recipient of a blood transfusion	F	0	0	0	3	1	2	3	2	1	0
	M	2	0	2	2	2	0	4	4	0	0
People with heterosexual contacts	F	69	3	66	58	9	49	141	34	107	5
	M	52	8	44	27	8	19	71	17	54	9
People with homosexual contacts	M	0	0	0	8	0	8	16	7	9	0
Vertical way of transmission	F	0	0	0	2	2	0	2	2	0	2
	M	1	0	1	5	3	2	5	3	2	1
Unknown	F	0	0	0	5	1	4	5	2	3	1
	M	4	1	3	4	2	2	3	1	2	2
		<i>Of which:</i>									
Foreigners										26	
Died										191	
Total number of registered cases										880	

Table 3.

Distribution of new cases of HIV / AIDS by regions, Georgia, 2002 - 2005

	2002	2003	2004	2005
Abkhazia	1	5	5	7
Ajara	12	14	27	27
Tbilisi	49	27	58	80
Kakheti	1	3	4	9
Imereti	9	14	17	32
Samegrelo	10	22	23	46
Shida Kartli	3	1	2	5
Kvemo Kartli	2	3	1	8
Guria	4	1	2	11
Samtskhe - Javakheti	0	0	11	3
Mtskheta - Mtianeti	0	0	2	5
Racha – Lechkhumi and Kvemo Svaneti	0	0	1	0
Georgia	93	94	163	242