

Table of contents

Introduction	2
Vital statistics	3
Health care provided to the population	11
Health care network, medical staff, resources	14
Primary health care	19
Surgical care	26
Functioning of auxiliary departments	31
Functioning of diagnostic departments	32
Functioning of anti rabies departments	33
Functioning of blood preparing and blood transfusion departments	34
Medical departments and cabinets	34
Immunization and vaccination	35
Maternal and child health	37
Health status profiles	50
Certain infectious and parasitic diseases	54
Pulmonary and extra pulmonary tuberculosis	60
Sexually transmitted infections	65
HIV / AIDS	68
Neoplasms	70
Blood and blood-forming diseases	76
Endocrine diseases	81
Mental disorders	86
Diseases of the nervous system	89
Diseases of the circulatory system	94
Diseases of the respiratory system	99
Diseases of the digestive system	102
Diseases of the genitourinary system	105
Injuries, poisonings and burns	109
<i>Some health and health care indicators according to the districts of Georgia</i>	113
Adolescent health and adolescent risk behavior	127
Glossary	140

INTRODUCTION

“Health and Health Care” represents the annual edition of the Ministry of Labor, Health and Social affairs containing the basic indicators of the population health status and resources of the health care system. The yearbook has being published since 1996.

The yearbook is prepared by the National Centre for Disease Control and Medical Statistics after L. Sakvarelidze of the Ministry of Labor, Health and Social Affairs of Georgia on the basis of branch statistical reports.

The methodology of the calculation, recommended by the WHO and the UNO, that provides comparability of indicators over countries, is applied at the calculation of the resulted indicators given in the yearbook. Definitions and formulas for the calculation of indicators can be found in the appendix of the yearbook.

The book contains indicators on the health care resource consumption, maternal and child health, and incidence and prevalence of diseases according to the classes of diseases, such as, communicable diseases, neoplasms, the circulatory system diseases, mental disorders, the genitourinary system diseases, endocrine diseases, the respiratory system diseases, and other. Also an analysis of regional data is shown in the yearbook, which gives an opportunity to determine the health care priorities not only for the country level but for regions as well. Some health and health care indicators for the district level are shown in the yearbook for the first time. The results of a special survey “Adolescent health and adolescent risk” can be found in the annex to the yearbook.

VITAL STATISTICS*

Table 1.

Population in the regions according to the population census, Georgia, 2002**

	Total	Children under 15 years of age	Including	
			Female	Male
Abkhazia	1,956	415	958	998
Ajara	376,016	90,349	194,877	181,139
Tbilisi	1,081,679	210,539	593,172	488,507
Kakheti	407,182	84,821	212,141	195,041
Imereti	699,666	135,933	367,758	331,908
Samegrelo	466,100	93,136	246,282	219,818
Shida Kartli	314,039	68,478	163,040	150,999
Kvemo Kartli	497,530	120,566	256,245	241,285
Guria	143,357	28,254	76,123	67,234
Samtskhe-Javakheti	207,598	49,150	107,198	100,400
Mtskheta-Mtianeti	125,443	25,945	65,048	60,395
Racha-Lechkhumi and Kvemo Svaneti	50,969	8,358	26,940	24,029
Georgia	4,371,535	915,944	2,309,782	2,061,753

Table 2.

Population in thousands and percents by the age and sex groups, Georgia, 2002

Age groups	Population (thousand)			Population (percent)		
	Both sexes	Male	Female	Both sexes	Male	Female
-1	45.2	23.7	21.5	1.0	1.1	0.9
1-4	198.4	104.1	94.3	4.5	5.0	4.1
5-9	302.3	155.3	147.0	6.9	7.5	6.4
10-14	370.1	187.7	182.4	8.5	9.1	8.0
15-19	357.2	179.8	177.4	8.2	8.7	7.7
20-24	327.5	162.6	164.9	7.5	7.9	7.1
25-29	311.1	151.7	159.4	7.1	7.4	6.9
30-34	300.6	144.7	155.9	6.9	7.0	6.7
35-39	323.5	152.0	171.5	7.4	7.4	7.4
40-44	335.4	157.7	177.7	7.7	7.7	7.7
45-49	287.6	134.1	153.5	6.6	6.5	6.6
50-54	247.4	114.6	132.8	5.7	5.6	5.7
55-59	148.9	67.0	81.9	3.4	3.2	3.5
60-64	257.9	111.2	146.7	5.9	5.4	6.4
65-69	202.4	87.4	115.0	4.6	4.2	5.0
70-74	175.9	72.5	103.4	4.0	3.5	4.5
75-79	104.7	36.2	68.5	2.4	1.8	3.0
80-84	43.8	11.6	32.2	1.0	0.6	1.4
85+	31.6	7.8	23.8	0.7	0.4	1.0
Total	4371.5	2061.7	2309.8	100.0	100.0	100.0
-15	916.0	470.8	445.2	21.0	22.8	19.4
15-64	2897.1	1375.4	1521.7	66.2	66.7	65.8
65+	558.4	215.5	342.9	12.8	10.5	14.8

* Data provided by the State Department for Statistics of the Ministry of Economic Development of Georgia

** In accordance with the Population Census

Table 3.

Population in thousands according to the regions as of January 1st, Georgia, 2005 - 2006

	Total number	2005 Including		Total number	2006 Including	
		Urban	Rural		Urban	Rural
Tbilisi	1,079.7	1,079.6	0.1	1,103.3	1,103.2	0.1
Ajara	373.0	164.2	208.8	377.2	165.8	211.4
Guria	138.7	35.6	103.1	139.3	35.9	103.4
Racha-Lechkhumi and Kvemo Svaneti	49.1	9.1	40.0	49.1	9.1	40.0
Samegrelo	462.3	181.6	280.7	472.9	187.3	285.6
Imereti	689.0	319.0	370.0	700.1	327.1	373.0
Kakheti	399.9	79.1	320.8	404.8	81.0	323.8
Mtskheta-Mtianeti	122.5	30.8	91.7	124.5	32.1	92.4
Samtskhe-Javakheti	203.5	62.9	140.6	208.5	64.5	144.0
Kvemo Kartli	494.7	184.1	310.6	507.6	190.9	316.7
Shida Kartli	309.1	111.5	197.6	314.0	113.5	200.5
Georgia	4,321.5	2,257.5	2,064.0	4,401.3	2,310.4	2,090.9

Table 4.

Population in thousands and percent by the January 1st according to the age and sex groups by the regions, Georgia, 2005

Age groups	Population (thousand)			Population (percent)		
	Both sexes	Male	Female	Both sexes	Male	Female
-1	48.4	25.4	23.0	1.1	1.2	1.0
1-4	188.6	97.3	91.3	4.4	4.8	4.0
5-9	247.2	126.4	120.8	5.7	6.2	5.3
10-14	307.3	156.7	150.6	7.1	7.7	6.6
15-19	343.7	174.8	168.9	8.0	8.6	7.4
20-24	351.2	176.0	175.2	8.1	8.6	7.7
25-29	356.2	175.4	180.8	8.2	8.6	7.9
30-34	303.2	146.9	156.3	7.0	7.2	6.9
35-39	285.2	136.7	148.5	6.6	6.7	6.5
40-44	328.6	155.6	173.0	7.6	7.6	7.6
45-49	324.5	153.3	171.2	7.5	7.5	7.5
50-54	301.8	139.5	162.3	7.0	6.8	7.1
55-59	167.3	74.3	93.0	3.9	3.6	4.1
60-64	193.3	84.5	108.8	4.5	4.1	4.8
65-69	187.7	80.7	107.0	4.3	3.9	4.7
70-74	179.5	72.0	107.5	4.2	3.5	4.7
75-79	122.4	44.1	78.3	2.8	2.2	3.4
80-84	57.5	17.8	39.7	1.3	0.9	1.7
85+	27.9	6.2	21.7	0.7	0.3	1.1
Total	4,321.5	2,043.6	2,277.9	100.0	100.0	100.0
-15	791.5	405.8	385.7	18.3	19.9	16.9
15-64	2955.0	1417.0	1538.0	68.4	69.3	67.6
65+	575.0	220.8	354.2	13.3	10.8	15.5

Table 5.

Mid year population (thousand) by regions, Georgia, 2004 and 2005

	2004			2005		
	Total number	Including Urban	Rural	Total number	Including Urban	Rural
Tbilisi	1,079.0	1,078.9	0.1	1,091.5	1,091.4	0.1
Ajara	371.5	163.6	207.9	375.1	165.0	210.1
Guria	138.9	35.5	103.4	139.0	35.7	103.3
Racha-Lechkhumi and Kvemo Svaneti	49.4	9.2	40.2	49.1	9.1	40.0
Samegrelo	461.9	181.1	280.8	467.6	184.4	283.2
Imereti	689.6	318.7	370.9	694.5	323.1	371.4
Kakheti	400.6	79.4	321.2	402.4	80.1	322.3
Mtskheta-Mtianeti	122.5	30.8	91.7	123.5	31.5	92.0
Samtskhe-Javakheti	203.1	62.9	140.2	205.9	63.7	142.2
Kvemo Kartli	492.9	183.4	309.5	501.2	187.5	313.7
Shida Kartli	309.0	111.5	197.5	311.6	112.5	199.1
Georgia	4,318.4	2,255.0	2,063.4	4,361.4	2,284.0	2,077.4

Table 6.

Mid year population in thousand by age and sex groups, Georgia, 2004 and 2005

Age groups	2004			2005		
	Both sexes	Male	Female	Both sexes	Male	Female
-1	46.7	24.8	21.9	47.0	24.8	22.2
1-4	192.2	98.3	93.9	188.9	97.9	91.0
5-9	249.7	127.7	122.0	248.7	127.1	121.6
10-14	309.0	158.0	151.0	304.5	155.4	149.1
15-19	346.5	175.9	170.6	342.1	174.1	168.0
20-24	359.3	179.4	179.9	351.9	177.0	174.9
25-29	347.6	171.6	176.0	364.2	179.9	184.3
30-34	298.0	143.9	154.1	311.9	152.0	159.9
35-39	290.9	139.3	151.6	288.5	139.0	149.5
40-44	327.2	155.1	172.1	330.4	157.2	173.2
45-49	323.9	152.9	171.0	327.0	154.7	172.3
50-54	292.3	134.4	157.9	303.4	140.7	162.7
55-59	162.9	72.7	90.2	182.6	81.5	101.1
60-64	198.7	87.0	111.7	188.8	82.5	106.3
65-69	192.6	82.4	110.2	185.6	79.9	105.7
70-74	178.9	72.2	106.7	179.4	72.0	107.4
75-79	121.3	43.5	77.8	124.2	45.2	79.0
80-84	54.1	16.3	37.8	60.8	19.1	41.7
85+	26.6	5.9	20.7	31.5	7.2	24.3
Total	4,318.4	2,041.3	2,277.1	4,361.4	2,067.2	2,294.2
-15	797.6	408.8	388.8	789.1	405.2	383.9
15-64	2947.3	1412.2	1535.1	2990.8	1438.6	1552.2
65+	573.5	220.3	353.2	581.5	223.4	358.1

Table 7.

Main Demographic indicators, Georgia, 2004 – 2005

	2004		2005	
	Total number	Indicator	Total number	Indicator
Number of live births (rate per 1,000 population)	49,572	11.5	46,512	10.7
Population natural growth (rate per 1,000 population)	779	0.2	3,528	0.8
Number of deaths (rate per 1,000 population)	48,793	11.3	42,984*	9.9
Infant mortality (rate per 1,000 live births)	1,178	23.8	916	19.7
Number of still births (rate per 1,000 births)	870	17.2	739	15.6
Number of marriages (rate per 1,000 population)	14,866	3.4	18,012	4.1
Number of divorces (rate per 1,000 population)	1,793	0.4	1,928	0.4
External migration (rate per 1,000 population)	5,500	1.3	76,300	17.5

* In accordance with the expert assessment

Table 8.

General vital statistics, Georgia, 1960 – 2005

	Live births		Deaths		Population growth		Marriages		Divorces	
	Total number	Rate per 1,000 population	Total number	Rate per 1,000 population	Total number	Rate per 1,000 population	Total number	Rate per 1,000 population	Total number	Rate per 1,000 population
1960	102,866	24.7	27,015	6.5	75,851	18.2	44,075	10.6	1,470	0.4
1965	94,987	21.2	31,291	7.0	63,696	14.2	38,930	8.7	2,221	0.5
1970	90,207	19.2	34,283	7.3	66,924	11.9	36,518	7.8	4,943	1.0
1975	89,712	18.3	39,292	8.0	50,420	10.3	42,183	8.6	5,501	1.1
1980	89,458	17.6	43,346	8.5	46,112	9.1	50,547	10.0	6,788	1.3
1985	97,739	18.5	46,153	8.7	51,586	9.8	44,168	8.4	6,514	1.2
1989	91,138	16.8	49,682	9.2	41,456	7.6	38,288	7.1	7,358	1.4
1990	92,815	17.1	50,721	9.3	42,094	7.8	36,812	6.7	7,796	1.4
1991	89,091	16.3	52,416	9.6	36,675	6.7	38,070	7.0	7,440	1.4
1992	72,631	13.4	54,896	10.2	17,735	3.2	26,878	4.9	4,890	0.9
1993	61,594	12.0	57,539	11.2	4,055	0.8	24,105	4.9	3,211	0.7
1994	57,311	11.8	50,326	10.4	6,985	1.4	21,908	4.5	3,089	0.6
1995	56,341	11.9	49,073	10.4	7,268	1.5	21,481	4.4	2,685	0.6
1996	55,000	11.9	47,961	10.4	7,039	1.5	19,253	4.0	2,269	0.5
1997	54,000	11.9	47,575	10.5	6,425	1.4	17,099	3.5	2,267	0.5
1998	51,526	11.5	47,321	10.5	4,205	1.0	15,343	3.1	1,758	0.4
1999	48,695	10.9	47,184	10.6	1,511	0.3	13,845	3.0	1,622	0.4
2000	48,800	11.0	47,410	10.7	1,390	0.3	12,870	2.8	1,854	0.4
2001	47,589	10.8	46,218	10.5	1,371	0.3	13,336	3.0	1,987	0.4
2002	46,605	10.7	46,446	10.7	159	0.0	12,535	2.9	1,836	0.4
2003	46,194	10.7	46,057	10.6	137	0.1	12,696	2.9	1,825	0.4
2004	49,572	11.5	48,793	11.3	779	0.2	14,866	3.4	1,793	0.4
2005	46,512	10.7	42,984*	9.9	3,528	0.8	18,012	4.1	1,928	0.4

Table 9.

Age specific fertility rate and population reproduction gross and net rates, Georgia, 1989 – 2005

	All ages (15-49)	Age of the mother (in years)								Total fertility rate	Reproduction rate	
		- 20	20-24	25-29	30-34	35-39	40-44	45 +	Gross		Net	
1989	67.2	58.0	167.7	110.4	57.7	22.7	5.8	0.4	2.113	1.026	0.993	
1990	67.8	58.1	167.3	110.5	64.1	24.7	6.2	0.3	2.155	1.046	1.015	
1991	64.5	58.0	165.6	100.4	60.7	23.9	6.1	0.1	2.075	1.005	0.976	
1992	52.8	50.7	144.7	76.5	48.7	17.9	4.5	0.2	1.716	0.835	0.812	
1993	47.4	56.6	122.0	66.7	42.2	15.4	4.2	0.3	1.537	0.741	0.714	
1994	46.4	66.6	113.1	64.2	40.2	14.6	4.2	0.5	1.517	0.724	0.698	
1995	46.0	64.2	113.3	66.4	41.9	16.6	4.2	0.7	1.537	0.733	0.708	
1996	45.8	59.7	112.8	69.5	44.1	18.2	4.0	0.8	1.545	0.737	0.713	
1997	45.6	55.2	111.3	72.2	44.6	19.4	5.2	3.0	1.555	0.742	0.720	
1998	43.8	51.4	109.1	71.6	42.3	18.9	4.6	3.0	1.505	0.718	0.698	
1999	41.5	46.5	104.0	70.3	42.5	19.0	4.7	0.9	1.439	0.687	0.669	
2000	41.7	39.9	110.2	74.4	43.3	19.2	4.9	0.9	1.464	0.699	0.680	
2001	40.9	32.5	112.2	71.1	45.2	21.0	5.4	1.4	1.444	0.689	0.669	
2002	40.3	32.7	107.8	63.2	50.4	21.2	6.6	1.4	1.417	0.684	0.666	
2003	39.6	33.7	93.8	75.3	47.4	18.9	5.4	0.3	1.374	0.646	0.666	
2004	42.2	36.3	101.1	75.0	47.5	21.6	5.6	0.5	1.440	0.684	0.659	
2005	39.3	41.1	95.5	65.7	43.1	19.2	4.3	0.3	1.350	0.633	0.614	

Table 10.

Live births by regions, Georgia, 2004 - 2005

	2004			2005		
	Total number	Including Urban	Rural	Total number	Including Urban	Rural
Tbilisi	12,317	12,317	0	12,794	12,794	0
Ajara	5,716	2,623	3,093	4,711	2,297	2,414
Guria	1,431	781	650	1,432	687	745
Racha-Lechkhumi and Kvemo Svaneti	327	171	156	376	188	188
Samegrelo	3,817	1,971	1,846	4,408	2,753	1,655
Imereti	7,717	4,910	2,807	6,717	4,161	2,556
Kakheti	3,655	1,426	2,229	3,366	1,473	1,893
Mtskheta-Mtianeti	1,514	519	995	1,298	590	708
Samtskhe-Javakheti	2,836	937	1,899	2,303	993	1,310
Kvemo Kartli	6,407	3,151	3,256	5,148	3,054	2,094
Shida Kartli	3,835	2,231	1,604	3,959	2,184	1,775
Georgia	49,572	31,037	18,535	46,512	31,174	15,338

Table 11.

Live births by age of mother, Georgia, 1960 - 2005

	Total number	Age of the mother (in years)						
		- 20	20 - 24	25 - 29	30 - 34	35 - 39	40 - 44	45 +
1960	102,866	3,663	31,575	31,549	23,702	8,565	2,585	1,227
1965	94,987	4,656	21,863	33,992	19,608	11,760	2,462	646
1970	90,207	7,027	30,420	21,622	20,500	7,869	2,407	362
1975	89,712	8,331	36,126	23,857	10,746	8,336	1,996	320
1980	89,458	10,623	40,469	23,869	9,957	2,830	1,452	258
1985	97,839	10,009	42,629	27,730	12,352	4,272	635	212
1989	91,138	11,760	35,297	26,504	12,404	4,295	812	66
1990	92,815	11,906	35,271	26,228	13,712	4,734	920	44
1991	89,091	12,022	34,953	23,558	12,931	4,655	949	23
1992	72,631	10,487	30,200	17,503	10,198	3,500	717	26
1993	61,594	11,216	24,174	14,305	8,324	2,888	639	48
1994	57,311	12,597	21,155	12,810	7,444	2,612	624	69
1995	56,341	11,893	20,578	12,691	7,474	2,928	676	101
1996	55,000	10,862	19,903	12,715	7,591	3,153	649	127
1997	54,000	9,920	19,223	12,743	7,465	3,343	857	449
1998	51,526	9,212	18,609	12,287	6,939	3,256	768	455
1999	48,695	8,313	17,552	11,751	6,861	3,281	806	131
2000	48,800	7,124	18,394	12,100	6,868	3,305	868	141
2001	47,589	5,784	18,571	11,379	7,073	3,610	955	217
2002	46,605	5,833	17,945	10,077	7,834	3,541	1,150	225
2003	46,194	5,907	16,463	12,449	7,269	3,040	929	137
2004	49,572	6,187	18,179	13,196	7,316	3,277	971	446
2005	46,512	6,903	16,703	12,110	6,896	2,870	752	278

Table 12.

Deaths by regions, Georgia, 2004 - 2005

	2004			2005		
	Total number	Including Urban	Rural	Total number	Including Urban	Rural
Tbilisi	12,424	12,424	0	11,164	11,164	0
Ajara	3,017	1,550	1,467	3,020	1,898	1,122
Guria	1,963	673	1,290	1,746	754	992
Racha-Lechkhumi and Kvemo Svaneti	991	377	614	700	239	461
Samegrelo	3,682	1,343	339	4,193	2,249	1,944
Imereti	9,756	4,804	4,952	6,490	3,856	2,634
Kakheti	5,527	2,313	3,214	4,005	1,534	2,471
Mtskheta-Mtianeti	1,701	525	1,176	1,332	575	757
Samtskhe-Javakheti	2,208	1,002	1,206	1,706	918	788
Kvemo Kartli	3,561	2,094	1,467	3,086	1,663	1,423
Shida Kartli	3,963	2,435	1,528	3,279	1,727	1,552
Georgia	48,793	29,540	19,253	40,721	26,577	14,144

Table 13.

Deaths by age and sex groups, Georgia, 2004

Age groups	Total number of deaths			Mortality rate (per 1,000 population)		
	Both sexes	Male	Female	Both sexes	Male	Female
-1	1,178	636	542	23.8	24.4	23.0
1-4	132	76	56	0.7	0.8	0.6
5-9	88	60	28	0.4	0.5	0.2
10-14	83	52	31	0.3	0.3	0.2
15-19	154	107	47	0.4	0.6	0.3
20-24	243	172	71	0.7	0.9	0.4
25-29	317	234	83	0.9	1.4	0.5
30-34	503	370	133	1.7	2.6	0.9
35-39	679	508	171	2.3	3.6	1.1
40-44	1,090	795	295	3.4	5.2	1.7
45-49	1,477	1,067	410	4.6	7.0	2.4
50-54	1,746	1,217	529	6.0	9.2	3.4
55-59	1,982	1,335	647	12.0	18.1	7.1
60-64	2,685	1,654	1,031	13.6	19.2	9.3
65-69	5,886	3,336	2,550	30.2	40.3	22.7
70-74	7,136	3,771	3,365	40.2	52.2	31.9
75-79	9,746	4,757	4,989	79.8	108.1	63.8
80-84	6,737	2,480	4,257	122.7	151.2	110.6
85+	6,931	2,015	4,916	287.6	380.2	261.5
Total	48,793	24,642	24,151	11.3	12.1	10.6

Table 14.

Deaths by age and sex groups, Georgia, 2005

Age groups	Total number of deaths			Mortality rate (per 1,000 population)		
	Both sexes	Male	Female	Both sexes	Male	Female
-1	916	482	434	19.5	19.4	19.5
1-4	64	31	33	0.3	0.3	0.4
5-9	190	74	116	0.8	0.6	1.0
10-14	48	25	23	0.2	0.2	0.2
15-19	121	80	41	0.4	0.5	0.2
20-24	256	178	78	0.7	1.0	0.4
25-29	328	239	89	0.9	1.3	0.5
30-34	501	363	138	1.6	2.4	0.9
35-39	665	490	175	2.3	3.5	1.2
40-44	1,129	818	311	3.4	5.2	1.8
45-49	1,419	1,004	415	4.3	6.5	2.4
50-54	1,746	1,238	508	5.8	8.8	3.1
55-59	1,962	1,301	661	10.7	16.0	6.5
60-64	2,313	1,375	938	12.3	16.7	8.8
65-69	4,974	2,860	2,114	26.8	35.8	20.0
70-74	5,651	3,082	2,569	31.5	42.8	23.9
75-79	7,716	3,689	4,027	62.1	81.6	51.0
80-84	5,585	2,168	3,417	91.9	113.5	81.9
85+	5,137	1,594	3,543	163.1	221.4	145.8
Total	40,721	21,091	19,630	9.3	10.2	8.6

Table 15.

Infant mortality by age and sex groups, Georgia, 2004 and 2005

Age groups	2004		2005	
	Male	Female	Male	Female
0 day	636	542	482	434
1 day	208	189	317	318
2 days	65	64	43	28
3 days	65	37	33	16
4 days	32	28	20	9
5 days	20	22	11	11
6 days	15	16	7	7
7 - 13 days	34	25	2	3
14 - 20 days	43	32	11	9
21 - 27 days	17	25	5	2
28 days - 2 months	10	11	4	2
2 months	29	18	5	9
3 months	22	9	4	3
4 months	26	17	3	4
5 months	11	13	6	3
6 months	7	6	3	3
7 months	9	6	4	3
8 months	4	15	0	2
9 months	10	1	1	1
10 months	5	1	1	1
11 months	1	4	2	0
	3	3	0	0

Table 16.

Deaths by the main cause of death, Georgia, 2003 – 2005

	2003		2004		2005	
	Total number	Rate per 100,000 population	Total number	Rate per 100,000 population	Total number	Rate per 100,000 population
Total	46,057	1,063.7	48,793	1,129.9	40,721	933.7
Certain infectious and parasitic diseases	357	8.2	399	9.2	314	7.2
Neoplasms	5,681	131.2	5,520	127.8	4,433	101.6
Diseases of the blood and blood forming organs and certain disorders involving the immune mechanism	29	0.7	45	1.0	66	1.5
Endocrine, nutritional and metabolic diseases	1,630	37.7	850	19.7	500	11.5
Mental and behavioral disorders	55	1.3	49	1.1	29	0.7
Diseases of the nervous system	157	3.6	171	4.0	278	6.4
Diseases of the eye and adnexa	0	0	0	0.0	0	0.0
Diseases of the ear and mastoid process	0	0	0	0.0	0	0.0
Diseases of the circulatory system	30,192	637.5	30,455	705.2	27,492	630.3
Diseases of the respiratory system	1,703	39.3	3,991	92.4	1,020	23.4
Diseases of the digestive system	2,225	51.4	1,708	39.6	1,204	27.6
Diseases of the skin and subcutaneous tissue	8	0.2	6	0.1	1	0.0
Diseases of the musculoskeletal system and connective tissue	13	0.3	18	0.4	3	0.1
Diseases of the genitourinary system	379	8.8	407	9.4	330	7.6
Pregnancy, childbirths and the puerperium	23	0.6	21	0.9	10	0.4
Certain conditions originating in the perinatal period	836	19.3	859	19.9	886	20.3
Congenital malformations, deformations and chromosomal abnormalities	84	1.9	63	1.5	29	0.7
Symptoms, signs and abnormal clinical and laboratory findings, not elsewhere classified	1,439	33.2	2,317	53.7	2,888	66.2
Injury, poisoning and certain other consequences of external causes	1,246	28.8	1,914	44.3	1,238	28.4

Table 17.

Life expectancy at birth in years, Georgia, 1989 – 2005

	1989	1990	1995	1996	1997	1998	1999	2000	2001	2002	2003	2004	2005
Both sexes	71.3	71.4	70.3	70.7	70.9	71.2	71.4	71.3	71.5	71.5	72.0	71.4	73.1
Male	67.3	67.5	66.3	66.9	67.1	67.4	67.5	67.5	68.0	68.0	69.1	67.8	69.3
Female	75.0	75.0	74.2	74.3	74.5	74.8	75.1	75.0	74.8	74.8	74.7	74.9	76.7

HEALTH CARE*

In 2005, 1,193 independent licensed institutions providing health care have reported to the National Centre for Disease Control and Health statistics using standard routine health reports.

In total, 1,185 health institutions operate under supervision of the Ministry of Labor, Health and Social Affairs, and 8 under supervision of other ministries and departments.

In 2005, 20,311 physicians worked in the health sector of Georgia. The percentage of women from the total number of doctors constitutes 70.7.

Since 1999, the number of physicians per 100,000 population has been stable in Georgia, and in 2005, was equal to 464.6. This rate is twice higher in Tbilisi (930.0). Among Georgian regions the lowest indicator is in Samtskhe-Javakheti (184.4).

In 1988 – 1998, the total number of the medium-level medical staff was reduced almost twice. In 2005 in the comparison with 2004 this number has been reduced by 569 and was equal to 21053. The number of the medium-level medical staff per 100,000 population is 481.6. In average, there was one nurse per one medical doctor (in accordance with WHO recommendations this ratio must be 4 : 1).

By the end of 2005, there were 20,893.5 contracting working places for physicians in the health institutions, including 10,940 in ambulatories and polyclinics.

In 2005, 268 in-patient facilities with 17,095 beds have reported to the National Centre for Disease Control and Medical Statistics. There were 241 hospitals with 15,176 beds, 9 dispensaries with 216 beds, and 18 scientific – research institutes clinics with 1,703 beds. Of the total number of hospitals, 107 ones are specialized clinics and 50 – maternity homes.

In 2005 in the comparison with 2004, the total number of hospital beds was reduced by 2.9% (511 beds). The total number of hospital beds per 100,000 population equals to 321.1. In hospitals there were 7,892 contracting working places for physicians and 11,514 for the medium-level medical staff. In average there were 2.2 hospital beds per 1 physician and 1.5 hospital beds per 1 nurse.

In 2005 in comparison with 2004, the total number of hospitalizations was increased by 6.7%. The level of hospitalizations per 100,000 population was 5,975.3. At the same time, the total number of bed-days spent by patients in hospitals was decreased by 4.0% and equaled to 2,024,884 bed-days.

* the number of the population in the accordance to the Population Census 2002 is used as a denominator while calculating indicators

A hospital bed occupancy rate was 118.0 days, with average length of stay of 7 days, which was lower than in 2004 (8.7 days). The bed rotation rate was increased from 13.7 times to 15.2 times.

The highest bed occupancy rate and average length of stay were registered for patients with tuberculosis and mental disorders.

By the end of 2005, 262,296 patients were discharged from hospitals in Georgia, including 5,095 patients died. 46.1% of patients were under medical treatment in Tbilisi, 14.8% in Imereti and 10.5% in Ajara hospitals. The total case fatality rate equals to 1.9%. The case fatality rate decreased from 1.6% to 1.4% in the children under 15 years of age, and in infants from 4.2% to 3.8%. Case fatality rates in infants are high in Tbilisi (6.1%), Ajara (4.7%), Imereti (2.8), and Shida Kartli (2.5%).

In 2005, 98,695 surgical operations were performed in hospitals; this is 8.0% higher than in 2004. 18.6% of the operations were urgent. The total post operational case fatality rate is 0.7%, and for urgent operations this indicator is equal to 1.4%. 55.2% of surgical operations were made under general narcosis.

In 2005, 686 independent and 105 working within hospitals out-patient facilities have reported to the National Centre for Disease Control and Medical Statistics.

These above-mentioned 686 out-patient facilities are represented by 180 independent polyclinics, 51 medical centers, 100 independent dental clinics, 19 women consultancy centers, 77 dispensaries, and 248 independent ambulatories. There are 437 dependent ambulatories and 385 dependent nurse – midwife posts in the structure of ambulatory – polyclinic associations. From the total number of ambulance stations (81), only 72 were independent; more 9 dependent and work within other health settings.

All out-patient facilities working in the country registered 1,566,028 cases of diseases, which is 7.7% more than in 2004. There were registered 695,187 new cases of diseases, this indicator is 10.7% more than in 2004.

In 2005, general incidence and prevalence increased both in the total population and in children. The main growth of registered cases was in the respiratory system and the digestive system diseases.

In 2005, the total number of encounters to the primary health care facilities per person per year was 2.1. In the comparison with 2004, the total number of encounters to out-patient facilities per person per year changed from 1.8 to 1.9, the number of ambulance calls per person per year also increased from 0.05 to 0.1. In the out-patient facilities the total number of encounters per physician per year was 834.4, including visits to specialists (or 69.9 encounters per physician per months). This is 4.4% more than in 2004.

The level of the usage of the capacity of the out-patient network is only 38.3% from the planned capacity. It is to be mentioned that: in 1988, the out-patient

network was loaded by 84.7%, in 2002 – by 27.1%, in 2003 – by 32.5%, and in 2004 – by 35.7%.

In 2005, there were registered 700,121 routine health inspections of children and adolescents, including 59,715 adolescents checked at the graduating from a high school (37,805 males). During preventive inspections cases of low hearing (0.1%), low vision (0.1%), speech disturbances (0.2%), scoliosis (0.6%), and disorders of a bearing (0.5%) were revealed.

27,525 surgical operations were conducted at the surgical departments of the out-patient facilities; this is 20% more than in 2004.

In 2005, there were 28 day time hospitals with 371 beds, where 21,624 patients were treated.

There were 1,174 physicians, 1,065 nurses, and 190 paramedics serving in 81 ambulance stations in Georgia; 330 brigades of general profile and 2 specialized brigades delivered services in 473,542 cases.

Health Network, Medical Staff, Resources

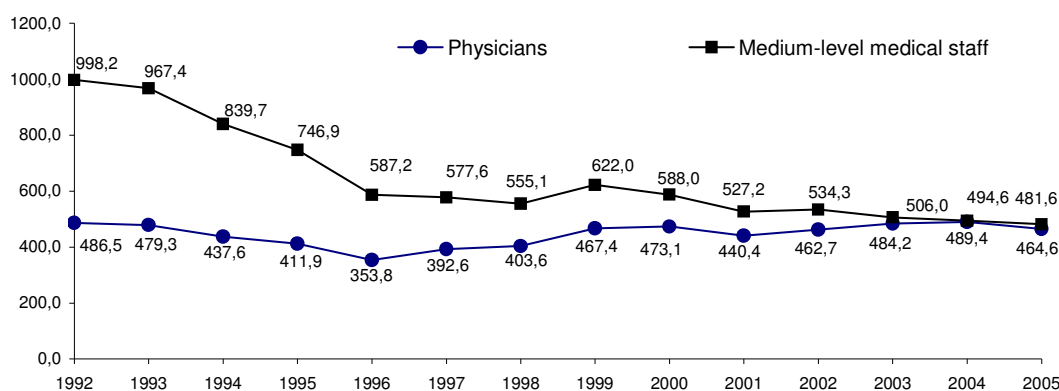


Figure 1. Numbers of physicians and medium-level medical staff per 100,000 population, Georgia, 1992 – 2005

Table 1.

Medical personnel, Georgia, 2005

	Number of physicians, physical persons	Number of physicians, per 100,000 population	Number of medium-level medical staff	Number of medium-level medical staff per 100,000 population	Number of paramedics	Number of paramedics per 100,000 population
Tbilisi	10,060	930.0	8,062	745.3	2,584	238.9
Ajara	1,196	310.1	2,124	564.9	810	215.4
Guria	397	276.9	488	340.4	123	85.8
Racha-Lechkhumi and Kvemo Svaneti	153	300.2	303	594.5	43	84.4
Samegrelo	1,309	280.8	1,637	234.0	288	61.8
Imereti	2,633	376.3	3,164	452.2	959	137.1
Kakheti	1,320	324.2	1,170	287.3	439	107.8
Mtskheta-Mtianeti	364	290.2	415	330.8	91	72.5
Samtskhe-Javakheti	385	185.4	774	372.8	261	125.7
Kvemo Kartli	1,005	202.0	1,334	268.1	344	69.1
Shida Kartli	905	288.2	1,041	331.5	385	122.6
Abkhazia	400	-	357	-	56	-
Departments other than the MOLHSA	184	-	184	-	82	-
Georgia	20,311	464.6	21,053	481.6	6,465	147.9

Table 2.

Medical personnel, Georgia, 2001 - 2005

	2001	2002	2003	2004	2005
Medium-level medical staff	23,360	23,356	21,906	21,396	21,053
Physicians (physical persons)	19,513	20,225	20,962	21,622	20,311
Therapists	2,421	2,354	2,256	2,470	1,951
Surgeons, including children's surgeons	1,073	1,057	1,108	1,011	883
Anaesthesiologists - reanimatologists	922	905	922	881	832
Orthopedist - traumatologists	313	305	298	261	261
Cardiologists	545	576	591	621	613
Urologists	211	211	221	212	191
Oncologists	228	227	253	249	225
Paediatricians	2,096	2,067	1,867	1,812	1,706
Infectionists	340	348	315	279	266
Otolaryngologist	354	344	348	324	292
Neurologists	593	631	655	658	609
Ophthalmologist	357	345	355	362	347
Dentists	1,436	1,483	1,412	1,306	1,300
Obstetric - gynecologists	1,534	1,476	1,466	1,450	1,418
Phthisiatricians	192	161	171	166	177
Venereologists	266	259	245	270	247
Psychiatrists	214	234	205	228	233
Endocrinologists	267	275	255	279	283
Other specialties	6,151	6,962	8,019	8,783	8,477

Table 3.

Health care network structure, Georgia, 2005

Type of the health facility	Total Number	Including: Working under the MOLHSA	Departments other than the MOLHSA
In-patient facilities	269	266	3
Out-patient facilities of hospitals	105	105	0
Dispensaries	77	77	0
Independent:			
Policlinics	180	176	4
Dentist clinics	100	100	0
Ambulance stations	72	72	0
Rural ambulatories	312	248	0
Nurse – midwife posts	1	1	0
Blood transfusion stations	6	6	0
Orphanages	2	2	0
Scientific – research institutes	20	20	0
Medical centers	51	51	0
Dependent:			
Medical doctor's posts	11	11	0
Rural doctor ambulatories	373	437	0
Nurse – midwife posts	385	385	0

Table 4.

Health care network structure in accordance with collected reports, Georgia, 2005

	Doctor's ambulatories		Nurse – midwife posts						
	Policlinics	Dispensaries	Independent	Dependent	Medical Centers	Scientific – research institutions	Independent women consultancy centers	Independent	Dependent
Tbilisi	128	17	4	0	32	19	10	0	4
Ajara	17	10	39	2	3	0	0	0	160
Guria	5	5	20	39	3	0	0	0	10
Racha-Lechkhumi and Kvemo Svaneti	3	0	11	20	0	0	0	0	31
Samegrelo	19	6	2	113	4	0	2	0	11
Mtskheta-Mtianeti	3	0	27	10	0	0	0	0	23
Samtskhe-Javakheti	15	5	11	24	0	0	1	1	62
Kvemo Kartli	12	6	19	51	2	1	0	0	30
Imereti	30	14	100	21	3	0	4	0	21
Kakheti	21	8	8	96	3	0	0	0	6
Shida Kartli	12	4	6	60	1	0	1	0	8
Abkhazia	11	2	1	1	0	0	1	0	19
Departments other than the MOLHSA	4	0	0	0	0	0	0	0	0
Georgia	280	77	248	437	51	20	19	1	385

Table 5.

In-patient facilities distribution by regions in accordance with collected reports, Georgia, 2005

	Total number		Hospitals		Including Dispensaries		Scientific – research institutes	
	Number of institutions	Number of beds	Number of institutions	Number of beds	Number of institutions	Number of beds	Number of institutions	Number of beds
Tbilisi	90	7,429	71	5,717	1	11	18	1,703
Ajara	24	1,508	21	1,423	3	85	0	0
Guria	7	345	6	320	1	25	0	0
Racha- Lechkhumi and Kvemo Svaneti	4	255	4	255	0	0	0	0
Samegrelo	27	1,234	26	1214	1	20	0	0
Mtskheta- Mtianeti	6	176	6	176	0	0	0	0
Samtskhe- Javakheti	13	655	13	655	0	0	0	0
Kvemo Kartli	22	1,064	22	1,064	0	0	0	0
Imereti	35	2,389	33	2,324	2	65	0	0
Kakheti	21	773	21	773	0	0	0	0
Shida Kartli	15	973	14	963	1	10	0	0
Abkhazia	2	50	2	50	0	0	0	0
Departments other than the MOLHSA	2	245	2	245	0	0	0	0
Georgia	268	17,095	241	15,176	9	216	18	1,703

Table 6.

Hospital beds: performance indicators, Georgia, 2005

	Number of beds per 100,000 population	Occupancy rate (days)	Average length of stay	Bed rotation
Tbilisi	686.7	124.1	7.6	16.2
Ajara	401.0	130.6	7.1	18.4
Guria	240.7	113.1	7.5	15.0
Racha-Lechkhumi and Kvemo Svaneti	500.3	84.1	7.7	11.0
Samegrelo	264.7	89.0	7.2	12.3
Imereti	341.4	150.2	9.6	15.7
Kakheti	189.8	99.6	5.4	18.3
Mtskheta-Mtianeti	140.3	74.5	4.5	16.7
Samtskhe-Javakheti	315.5	134.6	10.8	12.5
Kvemo Kartli	213.9	75.7	6.1	12.4
Shida Kartli	309.8	91.9	7.9	11.5
Abkhazia	-	66.2	5.7	11.6
Departments other than the MOLHSA	-	65.2	12.3	5.4
Georgia	391.0	118.0	7.7	15.2

Table 7.

Hospital beds: performance indicators according to the bed specialty, Georgia, 2005

Bed specialty	Number of beds	Occupancy rate (days)	Average length of stay	Bed rotation
Therapy	2,879	72.3	6.3	11.8
Paediatrics	1,866	151.3	9.4	16.5
Surgery	4,256	83.5	6.2	13.7
Oncology and radiology	418	188.9	19.2	9.7
Infectious diseases	1,083	98.2	7.3	13.6
Tuberculosis	547	300.4	57.5	5.2
Obstetrics - gynecology	3,303	107.3	4.7	22.8
Neurology	589	101.2	9.6	10.9
Psychiatry and narcology	1,271	240.4	73.5	3.3
Otolaryngology	214	36.9	1.5	24.8
Ophthalmology	215	82.6	4.1	19.9
Venereology	20	14.5	5.8	2.5

Table 8.

Hospitalization and case fatality rates in regions, Georgia, 2004 - 2005

	2004		2005	
	Number of hospitalizations per 100,000 population	Case fatality rate (%)	Number of hospitalizations per 100,000 population	Case fatality rate (%)
Tbilisi	10,183.0	2.6	11,245.7	2.5
Ajara	5,610.4	2.0	7,221.5	1.9
Guria	3,182.9	1.1	3,621.0	1.3
Racha-Lechkhumi and Kvemo Svaneti	6,086.0	0.6	5,489.6	0.6
Samegrelo	3,073.6	1.0	3,269.3	1.1
Imereti	5,173.0	1.5	5,468.9	1.6
Kakheti	2,947.3	1.1	3,341.0	1.2
Mtskheta-Mtianeti	2,056.7	1.1	2,341.3	1.5
Samtskhe-Javakheti	3,897.4	0.8	3,947.5	0.7
Kvemo Kartli	2,583.6	1.5	2,655.1	1.3
Shida Kartli	3,249.9	1.4	3,579.2	1.5
Abkhazia	-	1.9	-	1.9
Georgia	5,580.4	1.9	5,975.3	1.9

Table 9.

Hospital discharges according to the main classes of diseases, Georgia, 2004 - 2005

	2004		2005	
	Total number of discharges	Hospital deaths	Total number of discharges	Hospital deaths
Total	245,082	4,703	262,296	5,095
Including:				
Certain infectious and parasitic diseases	16,580	230	17,071	184
Neoplasms	9,402	211	9,357	234
Endocrine, nutritional and metabolic diseases	3,343	66	4,039	62
Diseases of the blood and blood forming organs and certain disorders involving the immune mechanism	960	13	821	18
Mental and behavioral disorders	4,136	73	4,310	105
Diseases of the nervous system	10,624	133	10,810	175
Diseases of the circulatory system	27,765	1,681	28,284	1,919
Diseases of the respiratory system	38,395	251	44,406	229
Diseases of the digestive system	26,269	429	28,280	470
Diseases of the genitourinary system	9,207	92	11,144	79
Pregnancy, childbirths and the puerperium	63,979	16	66,336	8
Diseases of the skin and subcutaneous tissue	2,426	5	2,824	8
Diseases of the musculoskeletal system and connective tissue	3,182	3	2,684	6
Congenital malformations, deformations and chromosomal abnormalities	1,653	94	1,712	85
Certain conditions originating in the perinatal period	5,724	515	5,957	606
Symptoms, signs and abnormal clinical and laboratory findings, not elsewhere classified	2,592	278	3,015	290
Injury, poisoning and certain other consequences of external causes	18,836	603	21,247	618

Table 10.

Case fatality rate in hospitals, Georgia, 2004 – 2005

	2004		2005	
	Total	In children	Total	In children
Total	1.9	1.6	1.9	1.4
Including:				
Certain infectious and parasitic diseases	1.4	0.9	1.1	0.5
Neoplasms	2.2	1.5	2.5	1.3
Endocrine, nutritional and metabolic diseases	2.0	0	1.5	0.3
Diseases of the blood and blood forming organs and certain disorders involving the immune mechanism	1.3	0.7	2.2	1.1
Mental and behavioral disorders	1.9	0	2.4	0
Diseases of the nervous system	1.3	1.1	1.6	0.8
Diseases of the circulatory system	6.0	2.3	6.8	2.5
Diseases of the respiratory system	0.6	0.3	0.5	0.2
Diseases of the digestive system	1.6	0.3	1.7	0.4
Diseases of the genitourinary system	1.0	0.2	0.7	0.07
Pregnancy, childbirths and the puerperium	0.03	0	0.01	0
Diseases of the skin and subcutaneous tissue	0.2	0	0.3	0
Diseases of the musculoskeletal system and connective tissue	0.09	0	0.2	0
Congenital malformations, deformations and chromosomal abnormalities	5.7	6.8	5.0	5.5
Certain conditions originating in the perinatal period	9.4	9.4	10.2	10.2
Symptoms, signs and abnormal clinical and laboratory findings, not elsewhere classified	10.7	3.3	9.6	2.1
Injury, poisoning and certain other consequences of external causes	3.2	0.9	2.9	0.5

Table 11.

Functioning of the day-time hospitals, Georgia, 2004 - 2005

	2004		2005	
	At hospitals	At out-patient facilities	At hospitals	At out-patient facilities
Number of the day time departments	26	6	20	8
Number of beds	439	42	329	42
Number of patients treated	5,223	1,485	7,712	13,912

Table 12.

Functioning of nursing homes for children, Georgia, 2003 - 2005

	2003	2004	2005
	Number of infants' nursing homes	2	2
Number of places for the medium-level medical staff	180	195	195
Number of staff	256	241	257
Including:			
Physicians	19	18	19
Medium-level medical staff	28	22	28
Teachers	95	83	92
Number of children in the orphanage by the end of the year			
Total	160	170	170
Including:			
0-1 year of age	58	57	48
1-3 years of age	79	76	89
3 + years of age	23	37	33
Number of children left the orphanage during the year:			
Taken by parents	60	55	71
Adopted	49	43	34
Transferred to educational and social institutions due to the age	15	14	4
Died	23	28	27

Table 13.

Functioning of anatomy and pathology departments, Georgia, 2004-2005

	2004		2005	
	Total	Number of autopsies performed % of hospital deaths	Total	% of hospital deaths
Total	471	10.5	466	9.1
Including:				
Children under 14 years of age	168	3.7	90	1.8
Newborns 0 – 6 days of age	42	0.9	46	0.9
Still births	162	3.6	162	3.2

Primary Health Care

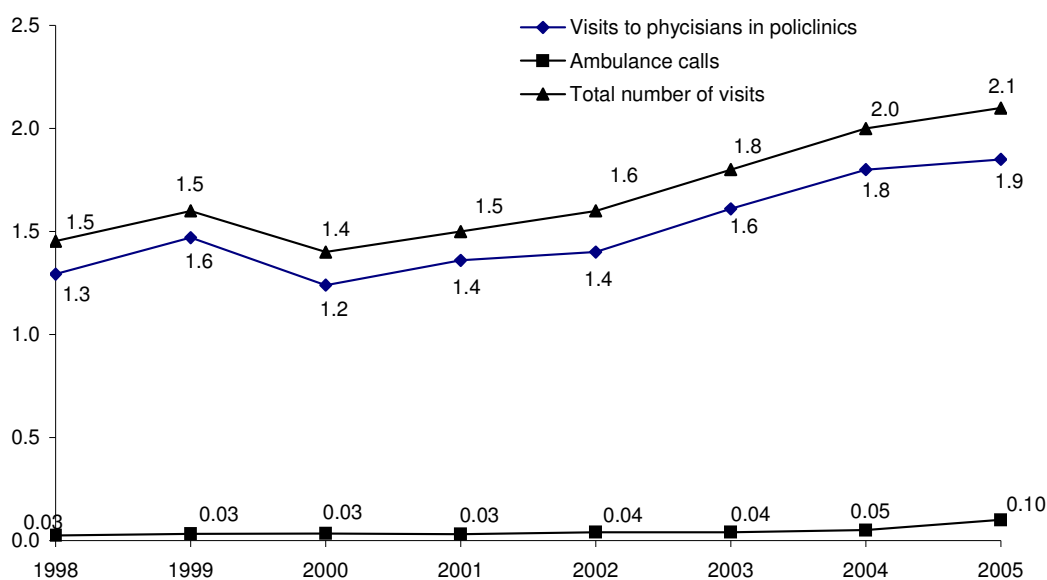


Figure 1. Number of encounters with the primary health care facilities per person per year, Georgia, 1998 – 2005

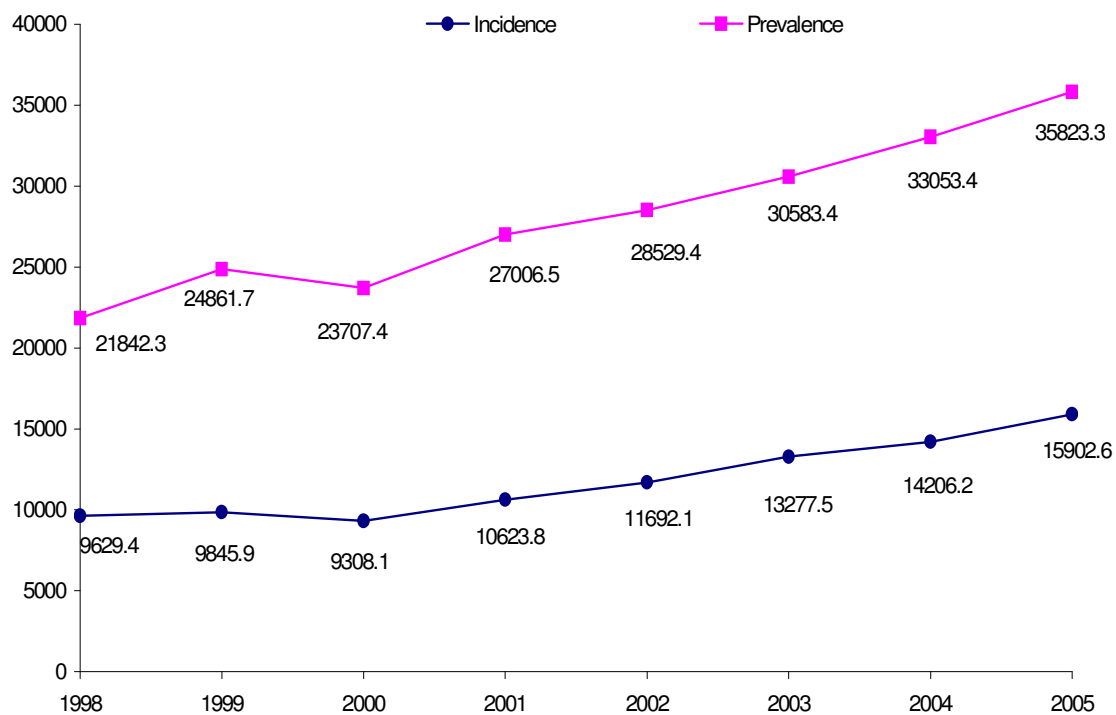


Figure 2. General incidence and prevalence rates per 100,000 population, Georgia, 1998- 2005

Table 1.

Morbidity indicators according to the main classes of diseases, Georgia, 2004 - 2005

Main classes of diseases	2004				2005			
	Total number of cases	Prevalence rate per 100,000 population	Number of new cases	Incidence rate per 100,000 population	Total number of cases	Prevalence rate per 100,000 population	Number of new cases	Incidence rate per 100,000 population
Total	1,444,941	33,053.4	621,027	14,206.2	1,566,028	35,823.3	695,187	15,902.6
	Including:							
Certain infectious and parasitic diseases	78,080	1,786.1	55,577	1,271.3	79,249	1,812.8	53,999	1,235.2
Neoplasms	40,902	935.6	8347	190.9	43,338	991.4	8,364	191.3
Endocrine, nutritional and metabolic diseases	158,603	3,628.1	29,920	684.4	163,424	3,738.4	31,483	720.2
Diseases of the blood and blood forming organs and certain disorders involving the immune mechanism	16,175	370.0	8,605	196.8	16,305	373.0	8,505	194.5
Mental and behavioral disorders	106,921	2,445.8	7,637	174.7	94,679	2,165.8	7,016	160.5
Diseases of the nervous system	143,783	3,289.1	51,520	1,178.5	161,288	3,689.5	54,874	1,255.3
Diseases of the circulatory system	283,921	6,494.8	70,648	1,616.1	315,988	7,228.3	82,533	1,883.0
Diseases of the respiratory system	306,984	7,022.3	235,532	5,387.9	328,310	7,510.2	249,115	5,698.6
Diseases of the digestive system	113,272	2,591.1	41,885	958.1	161,769	3,700.6	84,876	1,941.6
Diseases of the genitourinary system	69,913	1,599.3	31,485	720.2	70,913	1,622.1	31,644	723.9
Pregnancy, childbirths and the puerperium	7,329	631.6	6,052	521.6	9,516	820.1	8,209	707.4
Diseases of the skin and subcutaneous tissue	33,859	774.5	23,770	543.7	33,825	773.8	23,326	533.6
Diseases of the musculoskeletal system and connective tissue	31,978	731.5	10,731	245.5	36,641	838.2	13,161	301.1
Congenital malformations, deformations and chromosomal abnormalities	6,438	147.3	1,192	27.3	5,898	134.9	1,067	24.4
Certain conditions originating in the perinatal period	4,020	86.7	2,477	53.4	3,749	85.8	2,462	56.3
Symptoms, signs and abnormal clinical and laboratory findings, not elsewhere classified	5,815	133.0	3,161	72.3	5,522	126.3	2,521	57.7
Injury, poisoning and certain other consequences of external causes	39,948	845.2	32,488	743.2	35,614	814.7	32,032	732.7

Table 2.

General morbidity rates per 100,000 population according to the regions, Georgia, 2004 - 2005

	2004				2005			
	Prevalence		Incidence		Prevalence		Incidence	
	All ages	In children	All ages	In children	All ages	In children	All ages	In children
Tbilisi	43,827.9	69,825.5	20,921.9	54,669.7	50,703.7	77,230.3	25,944.0	58,971.0
Ajara	21,391.1	14,579.0	9,252.3	9,495.4	23,911.0	23,549.8	11,218.4	18,029.0
Guria	30,950.7	40,971.2	16,631.9	33,485.5	32,301.9	43,370.9	17,028.8	36,083.4
Racha-Lechkhumi and Kvemo Svaneti	54,817.6	40,380.5	11,479.5	13,867.0	54,066.2	32,986.4	12,189.8	12,778.2
Samegrelo	26,157.0	20,826.5	9,375.9	11,672.2	26,451.2	17,957.6	9,090.3	9,998.3
Mtskheta-Mtianeti	26,571.4	18,797.5	11,777.5	13,998.8	27,144.6	21,773.0	11,801.4	16,434.8
Samtskhe-Javakheti	22,018.0	14,775.2	7,644.6	6,008.1	23,758.4	14,881.0	9,107.5	7,210.6
Kvemo Kartli	16,066.8	19,095.7	5,802.3	7,945.0	16,946.3	14,147.4	5,535.3	8,681.6
Imereti	27,125.2	22,350.7	9,968.8	13,162.4	29,140.2	23,162.9	10,035.4	14,132.0
Kakheti	29,206.3	31,149.1	10,409.8	16,814.2	30,990.1	34,225.0	11,222.3	19,627.2
Shida Kartli	29,081.4	46,433.9	15,132.8	34,935.3	32,512.8	47,241.4	17,077.8	34,812.6
Georgia	33,053.4	37,388.6	14,206.2	28,911.2	35,823.3	40,222.3	15,902.6	28,201.4

Table 3.

Number of contacts with the primary health care per person per year, Georgia, 1998 - 2005

Type of the contact	1998	1999	2000	2001	2002	2003	2004	2005
Out-patient facilities								
Encounters to physicians, all ages	1.41	1.47	1.24	1.36	1.40	1.61	1.80	1.85
In children under 15 years of age	1.02	0.99	0.93	0.98	1.10	1.40	1.64	1.57
Home visits, all ages	0.08	0.08	0.08	0.08	0.09	0.10	0.12	0.11
In children under 15 years of age	0.23	0.19	0.19	0.19	0.20	0.24	0.26	0.25
Ambulance								
Ambulance calls, all ages	0.027	0.032	0.034	0.031	0.04	0.04	0.05	0.10
In children under 15 years of age	0.001	0.005	0.003	0.002	0.003	0.004	0.003	0.038
Total number of contacts, all ages	1.6	1.6	1.4	1.5	1.6	1.8	2.0	2.1

Table 4.

Functioning of the out-patient facilities, Georgia, 2001 - 2005

	2001	2002	2003	2004	2005
Total number of contacts	6,582,632	6,925,994	7,976,119	8,767,335	9,172,044
Including:					
Encounters to policlinics and ambulatories	5,980,668	6,325,008	6,980,832	7,890,279	8,069,045
Including to dentist clinics	283,324	274,548	303,240	306,359	330,360
Home visits	366,806	370,923	418,048	505,862	475,390
Visits to midwife posts	99,619	67,687	81,358	153,006	174,187
Ambulance calls	135,539	162,376	192,641	218,188	453,422
Planned capacity of the out-patient facilities (number of patients per shift per day)	94,271	98,249	94,390	94,319	92,061
Out-patient network occupancy rate	26.9	27.1	32.5	35.7	38.3
Real number of encounters per shift	25,318	26,638	30,677	33,720	35,277

Table 5.

Preventive examinations in children and student adolescents, Georgia, 2005

	Number of the population examined	Examinations revealed				Disorders of a bearing (%)
		Low hearing (%)	Low vision (%)	Speech disturbances (%)	Scoliosis (%)	
Children under 15 years of age and student adolescents 15 – 18 years of age	700,121	0.1	0.6	0.4	0.6	0.5
Including:						
Children under 15 years of age	596,195	0.2	0.5	0.4	0.5	0.4
Infants	57,605	0.2	0.1	0.0	0.0	0.1
Children 1 – 5 years of age	158,514	0.1	0.3	0.6	0.3	0.2
Children 5 – 6 years of age	54,227	0.3	1.5	1.4	1.3	1.0
Adolescents 15 years of age	44,211	0.2	1.1	0.4	2.0	1.4
Adolescents 16 – 18 years of age at graduating from a high school	59,715	0.1	0.7	0.3	0.6	0.4
Number of males in the total number of adolescents	37,805	0.1	0.8	0.2	0.6	0.5

Table 6.

Functioning of dental clinics, Georgia, 2003 - 2005

	2003	2004	2005
Independent dentist clinics	93	93	100
Dependent dentist clinics	516	486	491
Total number of visits, all ages	303,240	306,359	330,360
Total number of visits per person per year (all ages)	0.07	0.07	0.07
In children: total number of visits	58,958	60,102	69,355
number of visits per person per year	0.07	0.06	0.07

Table 7.

Visits to dental clinics, Georgia, 1994 - 2005

	1994	1996	2000	2001	2002	2003	2004	2005
Total number of visits, all ages	3,035,344	601,126	293,198	283,324	274,548	303,240	306,359	330,360
	Including:							
In children under 15 years of age	705,970	173,088	54,644	45,590	42,940	58,958	60,102	69,355
In adolescents 15 – 18 years of age	338,168	35,339	21,800	18,729	21,846	26,853	26,575	24,936
Number of new cases, all ages	1,178,961	285,542	150,372	147,261	139,707	149,834	152,363	160,033
	Including:							
In children under 15 years of age	329,565	93,058	34,890	26,450	25,543	30,397	28,094	35,069
In adolescents 15 – 18 years of age	107,196	17,588	12,936	12,474	12,647	15,203	15,380	13,866

Table 8.

Dental network and staff in accordance with collected reports, Georgia, 2000 - 2005

	2000	2001	2002	2003	2004	2005
Independent dental clinics	63	68	83	93	93	100
Dental offices	482	450	436	516	486	431
Number of dentists	1,569	1,436	1,483	1,412	1,306	1,300
Number of dental technicians	286	309	255	280	226	242

Table 9.

Number of patients to whom emergent care was provided, Georgia, 1988 - 2005

	Total number of patients	After accidents		At sudden illness		Including At delivery and pathologic pregnancy		Transportation of diseased, lying-in women and newborns	
		Number of patients	%	Number of patients	%	Number of patients	%	Number of patients	%
1988	1,309,352	62,373	4.8	1,111,850	84.9	26,897	2.1	96,563	7.4
1989	1,252,456	61,077	4.9	1,075,578	85.9	25,796	2.1	90,005	7.2
1990	1,268,859	53,629	4.2	1,107,048	87.2	23,583	1.9	84,598	6.7
1991	1,164,685	54,777	4.7	1,016,856	87.3	19,555	1.7	73,497	6.3
1992	647,018	31,991	4.9	559,136	86.4	12,704	2.0	43,187	6.7
1993	420,521	19,673	4.7	361,960	86.1	6,938	1.6	31,950	7.6
1994	217,006	8,707	4.0	196,235	90.4	2,986	1.4	9,078	4.2
1995	156,920	7,774	5.0	144,533	92.1	1,317	0.8	3,296	2.1
1996	152,344	7,701	5.1	139,734	91.7	959	0.6	3,950	2.6
1997	117,734	7,295	6.2	105,932	90.0	780	0.7	3,727	3.2
1998	123,582	7,794	6.3	111,410	90.2	1,337	1.1	3,041	2.5
1999	142,695	10,219	7.2	126,644	88.8	1,856	1.3	3,976	2.8
2000	150,645	7,982	5.3	138,383	91.9	1,366	0.9	2,914	1.9
2001	135,539	7,618	5.6	124,233	91.7	1,126	0.8	2,562	1.9
2002	162,376	8,421	5.2	147,701	91.0	1,243	0.8	5,011	3.1
2003	192,641	10,166	5.3	172,589	89.6	2,104	1.1	7,782	4.0
2004	218,188	19,560	8.9	191,379	87.7	3,137	1.4	4,112	1.9
2005	453,422	38,594	8.5	393,183	86.7	5,246	1.2	16,399	3.6

Table 10.

**Number of patients to whom emergent care was provided,
Georgia, 2004-2005**

	2004	2005
Tbilisi	93,225	191,418
Ajara	32,430	48,684
Guria	3,126	11,693
Racha-Lechkhumi and Kvemo Svaneti	5,130	7,780
Samegrelo	13,163	35,929
Mtskheta-Mtianeti	3,152	8,077
Samtskhe-Javakheti	7,492	14,441
Kvemo Kartli	13,963	32,422
Imereti	29,184	60,835
Kakheti	10,413	23,371
Shida Kartli	5,637	18,772
Georgia	218,188	453,422

Table 11.

**Certain conditions registered by emergency services,
Georgia, 2005**

Conditions	Number of cases	Care provided by the state program
Total	453,422	427,264
Total number of accidents	38,594	37,823
Including traffic accidents	11,573	11,453
Damage of a body dangerous to a life	12,960	12,868
Heavy burn	631	621
Damage of the main vessels	867	846
Penetrating wound	1,129	1,081
Intoxication demanding reanimation actions	7,691	7,424
Tubular bone fracture	2,308	2,099
Delivery	5,246	5,158
Affective episode (cases of schizophrenia)	4,235	4,205
Acute mycro cardiac infarction (during the first 72 hours)	4,863	4,422
Acute micro cardiac infarction (during the first 24 hours)	17,535	17,255
Acute vascular disorder, cardiac asthma	24,993	24,246
Shock	2,307	2,227
Coma	4,989	4,840
Terminal state	4,799	4,644
Asphyxiation syndrome	9,042	8,879
Bronchial asthma syndrome	8,318	8,155
Foreign body in respiratory tract	195	195
Suicide (presumably)	573	567
Number of patients hospitalized by the emergency care services	69,339	

Table 12.

**Surgical activity in the out-patient facilities
(departments), Georgia, 1995-2005**

	1995	2000	2001	2002	2003	2004	2005
Total number of surgical operations	19,860	12,542	15,750	13,289	14,972	22,008	27,525
Including on:							
the eye and adnexa	574	230	621	489	854	963	1916
including micro surgery	2	1	322	232	440	343	951
including due to glaucoma	0	1	41	20	55	56	323
cataract	0	0	234	120	333	362	946
the ear, the throat and the nose	400	268	1,105	599	601	433	349
including on the ear	20	7	291	19	23	0	85
vessels	6	15	65	63	3	0	5
abdominal organs	3	3	168	34	22	34	30
including the abdominal hernia plastic without obstruction	3	0	5	12	6	4	8
the female genital tract	955	5,518	4,733	4,870	5,308	6,463	6,009
the musculoskeletal system	1,620	514	1,414	743	1,011	3,720	4,326
breast	252	119	144	128	186	137	361
the skin and subcutaneous tissue	15,327	5,870	7,190	6,363	5,990	10,147	14,358

Table 13.

Health surveillance upon the people with special rights and persons equal to them, people working in harmful and dangerous conditions, Georgia, 2002 - 2005

	2002	2003	2004	2005
Total number of persons enrolled by the beginning of the year	35,357	23,348	35,535	36,324
Including IV level contingent, percent	66.7%	44.9%	49.8%	41.8%
Number of newly enrolled persons	5,888	7,783	16,117	3,943
Number of persons taken off the list during the year	18,015	4,087	4,452	1,310
Total number of persons enrolled by the end of the year	23,230	27,044	47,200	44,957
Including IV level contingent	43.7%	36.0%	51.6%	45.7%

Table 14.

Health surveillance upon people with imparities and disabilities, including war invalids and veterans, Georgia, 2005

Total number of persons enrolled by the beginning of the year	69,393
Including	
war veterans, excluding war invalids	8,111
war invalids	5,034
internationalists	858
Number of newly enrolled persons	11,558
Number of persons taken off the list during the year	7,491
including died	3,226
Total number of persons enrolled by the end of the year	73,460

Table 15.

Health surveillance upon people with imparities and disabilities, including war invalids and veterans according to the disability groups, Georgia, 2005

	Total number	War veterans	Including: War invalids	Internationalists
Total number of persons enrolled by the end of the year	73,460	7,520	4,494	984
	<i>Including the following groups of disability:</i>			
I Heavy	10,625	308	502	35
II Essential	38,600	1,617	3,104	81
III Limited	13,714	1,137	888	143

Table 16.

Health inspections of people with imparities and disabilities, including war invalids and veterans, Georgia, 2005

	Total number	War veterans	Including: War invalids	Internationalists
Total number of persons enrolled by the end of the year	73,460	7,520	4,494	984
Number of Complex health examinations	23,779	3,711	2,399	373
Needed hospitalization	828	138	132	7
Number of sanatorium treatment courses	114	17	15	3

Table 17.

Results of health examinations of recruits, Georgia, 2003 - 2005

	2003	2004	2005
Total number of recruits examined during the year	10,082	1,0226	8,260
Number of the sick recruits:			
By the beginning of the year	3,986	3,175	3,371
Number of new cases revealed during the year	1,844	2,289	2,096
Number of persons taken off the list during the year	2,557	2,123	2,547
Including after the end of the course of a treatment	1,280	1,037	1,108
Total number of persons enrolled by the end of the year	3,273	3,341	2,920

Table 18.

Distribution of ratios of hospitalizations and the total number of out-patient cases by to the main groups of diseases, Georgia, 2005

	Including:	All ages	In children
		1:6	1:5.4
Total:			
Certain infectious and parasitic diseases		1:4.6	1:4.1
Neoplasms		1:4.6	1:0.75
Endocrine, nutritional and metabolic diseases		1:40.5	1:91.2
Diseases of the blood and blood forming organs and certain disorders involving the immune mechanism		1:19.8	1:23.5
Mental and behavioral disorders		1:22	1:121.3
Diseases of the nervous system		1:14.9	1:13.2
Diseases of the circulatory system		1:11.2	1:11.4
Diseases of the respiratory system		1:7.4	1:5.3
Diseases of the digestive system		1:5.7	1:4.2
Diseases of the genitourinary system		1:6.4	1:5.2
Pregnancy, childbirths and the puerperium		1:12.0	1:14.0
Diseases of the skin and subcutaneous tissue		1:13.6	1:7.8
Congenital malformations, deformations and chromosomal abnormalities		1:3.4	1:3.3
Certain conditions originating in the perinatal period		1:0.6	1:0.6
Symptoms, signs and abnormal clinical and laboratory findings, not elsewhere classified		1:1.8	1:3.1
Injury, poisoning and certain other consequences of external causes		1:1.7	1:1.8

Table 17.

Number of contacts with ambulatories in the rural population, Georgia, 2003-2005

	2003		2004		2005	
	Total number of contacts	Number of contacts per person per year	Total number of contacts	Number of contacts per person per year	Total number of contacts	Number of contacts per person per year
Ajara	91,510	0.4	190,819	0.9	174,943	0.8
Guria	126,303	1.2	173,774	1.6	153,630	1.5
Racha-Lechkhumi and Kvemo Svaneti	42,131	1.0	40,524	1.0	33,211	0.8
Samegrelo	217,056	0.8	272,880	1.0	272,165	1.0
Imereti	356,417	1.0	409,347	1.1	408,431	1.1
Kakheti	246,806	0.8	344,940	1.1	354,342	1.1
Mtskheta-Mtianeti	58,812	0.6	67,083	0.7	73,376	0.8
Samtskhe-Javakheti	57,683	0.4	100,435	0.7	135,616	1.0
Kvemo Kartli	128,077	0.4	140,586	0.5	139,576	0.4
Shida Kartli	109,198	0.6	145,136	0.7	153,528	0.8

Surgical Care

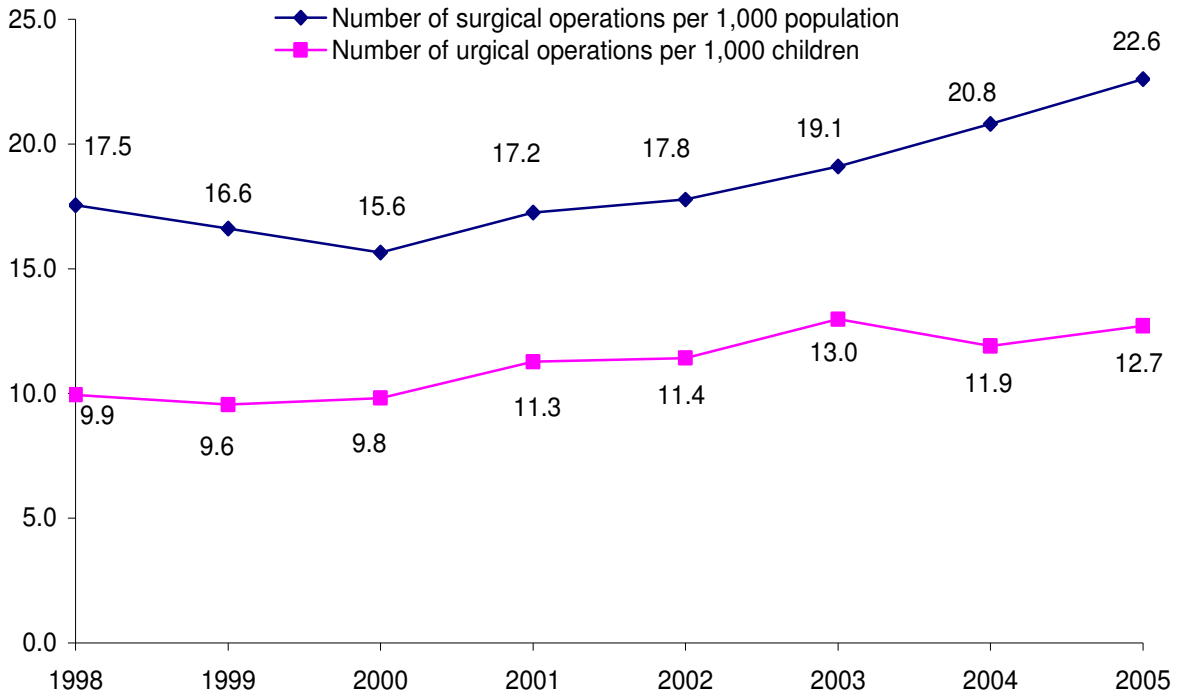


Figure 1. Number of surgical operations per 1,000 population, Georgia, 1998 – 2005

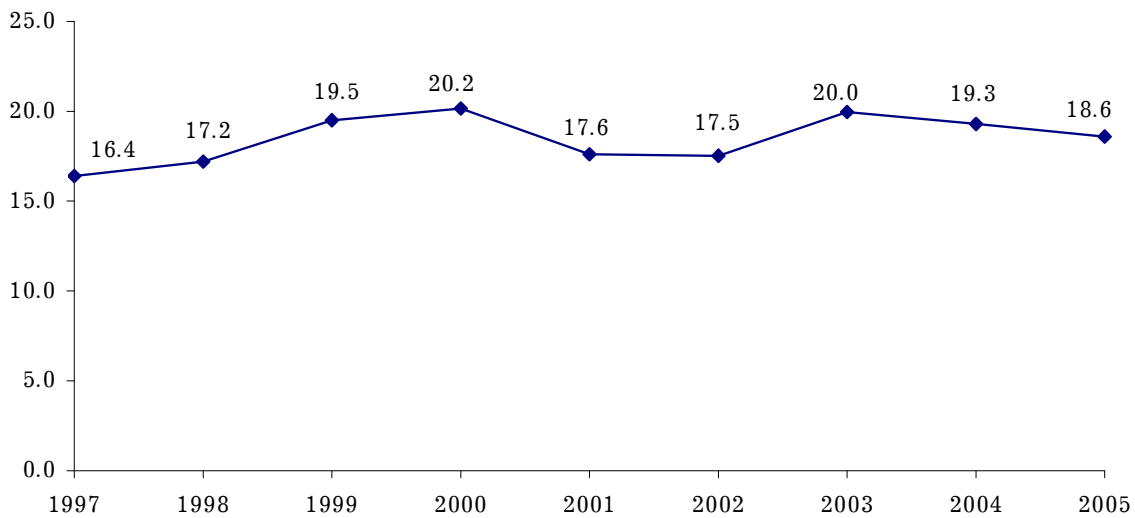


Figure 2. Percent of the urgent surgical operations from the total number of surgical operations, Georgia, 1997 - 2005

Table 1.

Surgical activity, Georgia, 2005

Type of the operation	Total number of the in-patient surgical operations		Number of post operational deaths	Post operational case fatality rate (%)
	All ages	In children		
All surgical operations	98,695	11,655	650	0.7
Operations on the nervous system organs	2,112	160	105	5.0
Including on the brain	835	113	80	9.6
the peripheral nervous system	281	4	2	0.7
Operations on the endocrine system organs	1,077	53	1	0.1
including due to thyreotoxicosis	0	0	0	0
Operations on the eye	4,317	407	1	0.02
including due to glaucoma	404	6	0	0
enucleating	95	4	0	0
cataract	2,401	46	0	0
Operations on the ear, the throat and the nose	1,704	597	0	0
including on the ear	199	54	0	0
Operations on the respiratory system organs	3,651	2,175	25	0.7
including pneumonectomy	67	4	7	10.4
resection of a part of the lung	121	3	5	4.1
resection of a segment of the lung	113	1	0	0
Operations on the heart	1,150	290	36	3.1
including on the open heart	232		10	4.3
implantation of a cardio stimulator	159		0	0
Operations on the blood vessels	1,518	20	33	2.2
Abdominal operations	23,434	3,660	337	1.4
Operations on kidney and ureter	1,920	119	19	1.0
Operations on prostate	1,023	28	3	0.3
Operations on female genital organs	8,593	6	6	0.1
Obstetric – gynecological operations	24,093		3	0.01
Operations on the musculoskeletal system	5,579	640	50	0.9
Including amputations of a limb or its part due to diabetes mellitus	289		4	1.4
Operations on breast	1,141		1	0.1
Operations on the skin and subcutaneous tissue	4,538	559	4	0.1

Table 2.

Surgical activity, Georgia, 1991 - 2005

	Surgical operations, all ages			Surgical operations in children		
	Total number	Total number of surgical operations per 1,000 population	Post operational case fatality rate (%)	Total number	Total number of surgical operations per 1,000 children	Post operational case fatality rate (%)
1991	179,377	32.9	0.5	26,082	19.7	0.0
1992	137,218	25.1	0.6	17,286	13.2	0.0
1993	114,796	21.5	0.8	14,227	11.4	0.0
1994	108,194	21.9	0.7	13,018	11.5	0.0
1995	97,583	20.4	0.7	10,774	9.9	0.0
1996	79,087	16.9	0.7	10,057	9.6	0.0
1997	79,114	17.4	0.7	8,875	8.8	0.0
1998	79,046	17.5	0.8	9,810	9.9	0.0
1999	74,234	16.6	0.8	9,219	9.6	0.0
2000	69,360	15.6	0.8	9,262	9.8	0.7
2001	75,905	17.2	0.7	10,415	11.3	0.6
2002	77,657	17.8	0.7	10,463	11.7	0.3
2003	82,626	19.1	0.7	10,970	13.0	0.5
2004	90,790	20.8	0.7	10,945	11.9	0.4
2005	98,695	22.6	0.7	11,655	12.7	0.5

Table 3.

**Essential information on surgical activity,
Georgia, 1992 - 2005**

	Total number of operations with general narcosis	Percent from the total number of surgical operations	Post operational case fatality rate for operations under general narcosis (%)	Number of essential urgent surgical operations	Percent from the total number of surgical operations	Post operational case fatality rate for some essential urgent operations (%)
1992	42,318	30.8	0.01	16,907	12.3	0.3
1993	28,387	24.7	0.01	13,396	11.7	1.6
1994	28,286	26.1	0.02	11,407	10.5	1.9
1995	32,360	33.2	0.01	12,387	12.7	1.7
1996	24,400	30.9	0.01	11,444	14.5	1.2
1997	30,864	39.0	0.01	13,007	16.4	1.7
1998	32,363	40.9	0.04	13,596	17.2	1.5
1999	31,974	43.1	0.02	14,484	19.5	1.4
2000	32,213	46.4	0.02	13,982	20.2	1.4
2001	34,173	45.0	0.02	13,372	17.6	1.1
2002	35,261	45.4	0.03	13,610	17.5	1.4
2003	39,386	47.7	0.03	16,498	20.0	1.3
2004	43,030	47.4	0.03	17,541	19.3	1.4
2005	54,499	55.2	0.01	18,414	18.6	1.4

Table 4.

Essential urgent surgical operations, Georgia, 2005

	Total number of operations	Number of patients died	Case fatality rate (%)
Total number of the urgent surgical operations	18,414	302	1.4
			Including:
Acute intestinal obstruction	1,016	73	7.2
Acute appendicitis	7,536	3	0.0
Ulcer of the stomach and duodenum with perforation	760	16	2.1
Intestinal bleeding	183	18	9.8
Gastro - intestinal obstructed hernia	3,685	16	0.4
Acute cholecystitis	1,439	25	1.7
Acute pancreatitis	61	7	11.5
Ectopic pregnancy	805	1	0.1
Gallbladder amputation	130	4	3.1
Lung resection	39	2	5.1
Amputation of a kidney	131	4	3.1
Amputation of a testis	125	0	0.0
Amputation of an ovary	97	0	0.0
Amputation of a limb or its part	343	11	3.2

Table 5.

Urgent surgical operations distribution by the site of the operation, Georgia, 2003 - 2005

	2003		2004		2005	
	Total number	%	Total number	%	Total number	%
All urgent operations	16,498	100	17,541	100	18,414	100
	Including:					
Acute appendicitis	6,359	38.5	7,020	40.0	7,536	40.9
Ulcer of the stomach and duodenum with perforation	834	5.0	726	4.1	760	4.1
Acute cholecystitis	1,294	7.8	1,473	8.4	1,439	7.8
Acute intestinal obstruction	918	5.6	1,072	6.1	1,016	5.5
Intestinal bleeding	310	1.9	218	1.2	183	1.0
Gastro - intestinal obstructed hernia	3,342	20.2	3,449	19.7	3,685	20.0
Acute pancreatitis	165	1.0	71	0.4	61	0.3
Ectopic pregnancy	951	5.8	950	5.4	805	4.4
Gallbladder amputation	89	0.5	110	0.6	130	0.7
Lung resection	23	0.1	55	0.3	39	0.2
Amputation of a kidney	98	0.6	117	0.7	131	0.7
Amputation of a testis	80	0.5	194	1.1	125	0.7
Amputation of a limb or its part	159	1.0	138	0.8	97	0.5
Amputation of a limb or its part	244	1.5	301	1.7	343	1.9

Table 6.

Abdominal operations, Georgia, 1992 - 2005

	Total number of the abdominal operations	Percent of the abdominal operations from the total number of surgical operations	Case fatality rate (%)	Including		Other operations Total number	Other operations Case fatality rate (%)
				Urgent operations Total number	Urgent operations Case fatality rate (%)		
1992	24,247	17.7	1.7	15,763	1.4	8,484	2.2
1993	20,758	18.1	2.1	12,612	1.8	8,146	2.6
1994	17,971	16.6	2.2	10,633	2.1	7,338	2.4
1995	17,584	18.0	2.0	11,612	1.8	5,972	2.3
1996	14,899	18.8	1.8	10,618	1.3	4,281	3.0
1997	16,967	21.4	1.9	11,982	1.8	4,985	2.1
1998	18,266	23.1	1.9	12,755	1.6	5,511	2.6
1999	18,948	25.5	1.8	13,478	1.4	5,470	2.6
2000	18,055	26.0	1.7	12,991	1.5	5,064	2.3
2001	18,367	24.2	1.6	12,385	1.1	5,982	2.4
2002	19,979	25.7	1.4	12,711	1.4	7,268	1.4
2003	19,647	23.8	1.4	13,346	1.1	6,301	1.9
2004	24,419	26.9	1.4	14,029	1.2	10,390	1.6
2005	23,434	23.7	1.4	14,680	1.1	8,754	2.0

Table 7.

Non urgent abdominal surgical operations with high case fatality rate, Georgia, 1992 - 2005

	Total number of the operations	Percent from the total number of all abdominal operations	Case fatality rate (%)
1992	2,442	10.1	6.3
1993	3,130	15.1	5.3
1994	2,872	16.0	4.6
1995	2,588	14.7	4.5
1996	2,153	14.5	5.0
1997	2,733	16.1	3.5
1998	2,565	14.0	1.3
1999	3,180	16.8	3.9
2000	2,304	12.8	3.9
2001	2,694	14.6	4.6
2002	3,776	18.9	2.5
2003	2,812	14.3	3.8
2004	2,706	11.1	3.2
2005	3343	14.3	3.2

Table 8.

Essential surgical operations and time between the onset of the disease and hospitalization, Georgia, 2005

	Total number of patients		From the total number of hospitalized patients				
	All cases	Hospitalization in more than 24 hours from the onset of the disease	Have not been operated	Case fatality rate (%)	Operated	Case fatality rate (%)	
							Total number
Acute intestinal obstruction	1,166	283	24.4	150	3.3	1,016	7.2
Acute appendicitis	7,579	1482	19.5	113	2.3	7,536	0.04
Ulcer of the stomach and duodenum with perforation	796	126	15.8	36	8.3	760	2.1
Intestinal bleeding	1,000	126	12.6	817	3.3	183	9.8
Gastro - intestinal obstructed hernia	3,709	295	7.9	24	0.0	3,685	0.4
Acute cholecystitis	1,531	438	28.6	92	0.0	1,439	1.7
Acute pancreatitis	126	57	45.2	65	0.0	61	11.5
Ectopic pregnancy	806	59	7.3	1	0.0	805	0.1

Table 9.

**Functioning of the in-patient surgical beds,
Georgia, 1994 – 2005**

	Total number of beds	Total number of surgical beds per 100,000 population	Bed occupancy rate (in days)	Average length of stay	Bed rotation
1994	8,797	178.4	121.4	16.4	7.6
1995	7,006	146.1	115.7	14.8	7.9
1996	5,210	111.5	85.5	10.1	8.6
1997	5,509	120.9	84.2	9.7	8.8
1998	5,387	119.6	95.3	10.0	9.6
1999	5,395	120.7	89.8	9.2	9.9
2000	5,022	113.2	74.7	8.2	9.1
2001	4,787	108.8	75.8	7.6	10.0
2002	4,518	103.3	82.0	7.6	10.9
2003	4,516	104.3	79.4	7.1	11.3
2004	4,441	101.6	83.2	6.8	12.4
2005	4,256	97.3	83.5	6.2	13.7

Table 10.

**Functioning of the in-patient surgical beds for
children, Georgia, 1994 - 2005**

	Total number of beds	Total number of surgical beds per 100,000 population	Bed occupancy rate (in days)	Average length of stay	Bed rotation
1994	830	73.0	110.4	11.9	9.5
1995	770	70.6	94.3	11.7	8.2
1996	666	63.4	79.1	9.3	8.7
1997	630	62.3	73.4	9.0	8.3
1998	655	66.4	78.7	8.7	9.2
1999	563	58.3	82.8	8.5	9.8
2000	588	62.3	70.7	7.5	9.6
2001	522	56.5	82.9	7.8	10.8
2002	513	57.4	78.5	7.6	10.5
2003	529	62.6	113.4	7.3	15.7
2004	549	59.9	116.7	6.0	19.6
2005	537	58.6	125.0	4.6	27.4

Table 11.

Surgical medical staff, Georgia, 1994 - 2005

	Surgeons		Including children surgeons		Total number of surgical operations per a surgeon per year
	Total number	Total number of surgeons per 100,000 population	Total number	Total number of surgeons per 100,000 children	
1994	1,930	39.1	164	14.4	56
1995	1,684	35.1	147	13.5	58
1996	1,546	33.1	122	11.6	51
1997	1,908	41.9	152	15.0	41
1998	1,917	42.6	143	14.5	41
1999	1,980	44.3	150	15.5	37
2000	1,957	44.1	128	13.6	35
2001	1,861	42.3	125	13.5	41
2002	1,823	41.7	111	12.4	43
2003	1,882	43.5	118	14.0	44
2004	1,774	40.6	121	13.2	51
2005	1,566	35.8	109	11.9	63

Table 12.

Total number of surgical operations and the post operational case fatality rate in regions, Georgia, 2004-2005

	2004		2005	
	Total number of surgical operations	Case fatality rate (%)	Total number of surgical operations	Case fatality rate (%)
Tbilisi	47,143	0.8	52,996	0.9
Ajara	6,591	1.0	8,993	0.5
Guria	1,180	0.1	1,350	0.2
Racha-Lechkhumi	585	0.9	391	0.3
Samegrelo	4,477	0.4	5,142	0.5
Imereti	1,180	0.3	12,713	0.3
Kakheti	3,532	0.8	4,037	0.4
Mtskheta-Mtianeti	807	0.1	895	0.1
Samtskhe-Javakheti	2,716	0.3	3,345	0.03
Kvemo Kartli	4,458	0.6	4,217	0.2
Shida Kartli	2,979	0.4	3,629	0.3
Abkhazia	509	0.0	304	0.3
Georgia	90,790	0.7	98,695	0.7

Functioning of the auxiliary departments

Table 1.
Total number

Type of the auxiliary department	Total number
Physiotherapeutic departments	
Total number of the patients ended the treatment , all ages	43,259
<i>Including at out-patient facilities and at home</i>	26,342
Number of children under 15 years of age among the patients ended the treatment	15,689
<i>Including at out-patient facilities and at home</i>	7,273
Total number of the procedures provided	254,810
<i>Including in out-patient facilities</i>	142,383
<i>at home</i>	2,260
Physiotherapy exercises departments	
Total number of the patients ended the treatment , all ages	16,618
<i>Including at out-patient facilities and at home</i>	7,939
Number of children under 15 years of age among the patients ended the treatment	7,639
<i>Including at out-patient facilities and at home</i>	4,944
Total number of the procedures provided	137,482
<i>Including at out-patient facilities</i>	73,434
<i>at home</i>	756
Reflex therapy departments	
Total number of the patients ended the treatment	954
Total number of the procedures provided	6,813
Hemodialysis departments	
Total number of places for hemodialysis	110
Total number of the procedures provided	62,939
High pressure oxygenation departments	
Total number of the sessions provided	150
Logaoedics departments	
Total number of the patients ended the treatment, all ages	1,835
<i>Including children under 15 years of age</i>	1,693

Functioning of the diagnostic departments

Table 1.

Functioning of the X-ray departments (including preventive examinations), Georgia, 2005

	Total number of examinations	Chest	Including Gastro - intestinal	Musculoskeletal
X-ray examinations	326598	14,8237	14,391	117,488
	Including:			
Radioscopy	64,433	53,766	8,896	1,300
Radiography	255,220	92,097	5,863	118,475
Electrical radiography	538	287	9	242
Diagnostic fluorography	16,391	7,675		
Special examinations	10,625	172	136	9
From the total number of special examinations:				
Angiography	333			
cholecistography	136			
Urography	1,497			
Computer tomography	4,542			
Regular tomography	3,050			
Salpingography	129			
X-ray examinations of a tooth	35,677			
Mammography	859			

Table 2.

Ultrasound examinations, Georgia, 2004 - 2005

	2004	2005
Chest ultrasound examinations	22,895	23,438
Abdominal ultrasound examinations	77,160	94,229
Ultrasound examinations of the female genital organs	51,288	93,553
Including during a pregnancy	24,412	46,150
Ultrasound examinations of newborns and infants	4,099	8,290
Breast ultrasound examinations	3,705	6,779
Thyroid gland ultrasound examinations	12,469	17,508
Ultrasound examinations of the musculoskeletal system	2,297	3,131
Doppler examination of the peripheral blood circulating system	2,483	2,983
Brain ultrasound examinations	6,732	6,997
Ultrasound functional biopsy and drainage	165	658
Ultrasound examinations during surgical operations	2,350	757

Table 3.

Functioning of the isotopic diagnostic laboratories, Georgia, 2004-2005

	2004	2005
Number of the isotopic diagnostic examinations	972	1,028
Including scanning	903	962
Functional examinations	69	66

Table 4.

Functioning of the endoscopy departments, Georgia, 2005

	Total number	Esophago-gastro- duodenoscopy	Including Colonoscopy	Bronchoscopy
Total number of endoscopies	16,053	10,757	1,224	2,126
	Including:			
Treatment procedures	2,523	996	47	764
From the total number of investigations, with cytomorphologic sampling	1,934	569	113	846

Table 5.

Functioning of medical labs, Georgia, 2005

	Total number of the lab analyses	hematological	cytological	Including biochemical	micro biological	immunological
All patients	4,480,438	1,663,797	96,770	1,075,968	291,001	345,794
Out-patient	2,234,092	841,703	62,654	502,410	163,966	184,324
	From the total number of analyses:					
Biochemical:						
For hormones						21,929
For enzymes						54,069
For coagulation and anti coagulating system parameters						223,196
For electrolytes and fluids exchange						71,611
Micro biological:						
Bacteriological investigation of the sample for detection of tuberculosis bacilli						68,523
Culturing						22,199
For diagnostics of diphtheria						3,089
Including Culturing						212
For meningococcal infection diagnostics:			microscopy			5,452
			Culturing			323
For malaria diagnostics - microscopy						1,468
Immunological:						
complex of serological reactions						131,895
special reactions for serum and liquor diagnostics of syphilis						59,344

Table 6.

Functional diagnostics departments, Georgia, 2004-2005

	2004	2005
Number of the examined patients, all ages	203,552	229,923
<i>Including at out-patient facilities and at home</i>	<i>121,145</i>	<i>137,174</i>
<i>Number of children under 15 years of age</i>	<i>15,435</i>	<i>12,837</i>
<i>Including at out-patient facilities and at home</i>	<i>5,183</i>	<i>5,601</i>
Total number of examinations	245,499	270,341
<i>Including at out-patient facilities</i>	<i>136,099</i>	<i>152,361</i>
<i>at home</i>	<i>2,447</i>	<i>4,463</i>

Anti rabies activities

Table 1.

Anti rabies vaccination, Georgia, 2004 - 2005

	2004	2005
Total number of patients to whom anti rabies care was provided	36478	42132
Total number of patients to whom preventive vaccination with gamma globulin was prescribed	30145	37935
	Of vaccinated patients:	
Number of conditional vaccination course	16485	19882
Number of non conditional courses	9798	12033
Number of interrupted vaccination courses	3862	6020

Functioning of blood preparation and blood transfusion departments

Table 1.

Main indicators of functioning of the blood transfusion departments, Georgia, 2000 - 2005

	2000	2001	2002	2003	2004	2005
Total number of blood donors	16,616	19,233	20,942	23,155	27,981	29,135
<i>Including</i> the free-of-charge (relatives)	6,379	5,144	5,745	6,253	6,030	7,115
Total number of medical staff	500	430	443	474	452	456
<i>Including</i> physicians	152	133	138	144	146	145
Number of prepared blood without conservation (l)	6,063	7,356	6,577	9,503	14,103	12,290
<i>Including</i> free-of-charge (l)	1,858	1,431	1,911	1,811	1,789	2,864
Red cell mass (l)	2,901	3,918	3,940	4,771	5,490	5,596
Freshly frozen plasma (l)	1,846	2,991	3,316	4,627	5,380	5,750
Red cell mass impoverished by white cells and trombocytes (l)	268	297	811	601	492	645
Trombocytes mass (l)	1,030	819	939	1,219	1,216	1,953
Albumin (l)	86	70	54	90	87	66

Health departments, units

Table 1.

Some health departments and units, Georgia, 2004 - 2005

Type of the department	2004 - 2005	
	2004	2005
Psychotherapy	198	214
Therapeutic physical training for adults and children	118	121
Reflex therapy	15	9
Hemodialysis	8	6
Hyperbaric oxygenation	3	3
Surdology	8	10
X-ray	309	313
Endoscopy	62	60
Anti rabies	74	73
Computer tomography	4	6
Vaccination and immunization	273	285
pathology service	24	22
Electrocardiography and functional diagnostics	254	267
Blood transfusion	136	139
Labs:		
Radioisotope diagnostics	1	1
Clinical diagnostics	621	627
Bacteriological	90	87
Serological	111	111
Biochemical	368	390
Cytological	54	60

Preventive vaccination and immunization*

Table 1.

Information on vaccination and immunization, Georgia, 2005

Vaccine	Vaccination age according to the National vaccination calendar	Number of the planned vaccinations	Total number of vaccinations	Vaccination coverage (%)
BCG - 1	Under 1	48,920	46,388	94.8
DPT - 1	2 months – 11 months . 29 days	44,326	40,700	91.8
DPT - 2	3 months – 11 months 29 days	44,326	38,775	87.5
DPT - 3	4 months – 11 months 29 days	44,326	36,344	82.0
DPT - 4	18 - 24 months	44,153	31,237	70.7
Polio- 1	2 months – 11 months 29 days	44,326	40,008	90.3
Polio- 2	3 months – 11 months 29 days	44,326	38,826	87.6
Polio- 3	4 months – 11 months 29 days	44,326	36,117	81.5
Polio- 4	18 - 24 months	44,153	31,115	70.5
Polio- 5	5 years - 5 years 11 months 29 days	47,487	36,089	76.0
Hp B - 1	0 - 24 hours	48,920	45,237	92.5
Hp B - 2	25 hours – 11 months 29 days	44,326	40,111	90.5
Hp B - 3 (timely)	3 months – 11 months 29 days	44,326	31,727	71.6
Hp B - 3 (late)	Year 1 +	9,548	7,492	78.5
MMR - 1	12 - 24 months	43,486	39,677	91.2
MMR - 2	5 years - 5 years 11 months 29 days	47,487	41,265	86.9
MMR	13 years	69,360	59,741	86.1
DT	5 years - 5 years 11 months 29 days	47,487	43,390	91.4
TD	14 years	73,450	52,039	70.8

Table 2.

Vaccination and immunization in regions, Georgia, 2005

	BCG- 1		DPT - 3		Polio- 3	
	Total number of vaccinations	Coverage (%)	Total number of vaccinations	Coverage (%)	Total number of vaccinations	Coverage (%)
Ajara	4,175	96.1	4,095	94.1	4,079	93.7
Tbilisi	19,870	100.0	10,987	80.2	11,229	82.0
Kakheti	2,993	89.8	3,295	88.7	3,470	93.4
Imereti	6,102	95.5	4,768	89.5	4,601	86.4
Samegrelo	2,581	84.3	2,071	80.2	2,053	79.5
Shida Kartli	2,475	96.2	2,477	83.7	2,387	80.6
Kvemo Kartli	4,057	87.0	3,803	66.3	3,438	60.0
Guria	837	78.5	1,025	92.5	967	87.3
Samtskhe-Javakheti	2,040	86.7	2,002	82.0	2,113	86.6
Mtskheta-Mtianeti	531	85.4	803	85.4	799	85.0
Racha-Lechkhumi and Kvemo Svaneti	154	85.6	185	65.4	178	62.9
Departments other than the MoLHSA	573	97.4	833	69.9	803	66.9
Georgia	46,388	94.8	36,344	82.0	36,117	81.5

* planned numbers of vaccinations were used as a denominator while calculating the coverage

Table 3.

Vaccination and immunization in regions, Georgia, 2005

	Hp B-3 (timely)		Hp B-3 (late)	
	Total number of vaccinations	Coverage %	Total number of vaccinations	Coverage %
Ajara	3,708	85.2	502	90.0
Tbilisi	9,116	66.6	1,584	54.5
Kakheti	3,264	87.8	377	73.1
Imereti	4,483	84.2	1,662	93.6
Samegrelo	1,478	53.7	561	122.0
Shida Kartli	2,327	78.6	895	84.5
Kvemo Kartli	3,189	55.6	1,170	90.2
Guria	762	68.8	269	62.7
Samtskhe-Javakheti	1,875	76.8	78	74.3
Mtskheta-Mtianeti	761	81.0	195	87.4
Racha-Lechkhumi and Kvemo Svaneti	111	39.2	11	18.6
Departments other than the MoLHSA	653	54.8	188	116.0
Georgia	31,727	71.6	7,492	78.5

Table 4.

Vaccination and immunization in regions, Georgia, 2005

	MMR - 1		MMR - 2		DT	
	Total number of vaccinations	Coverage %	Total number of vaccinations	Coverage %	Total number of vaccinations	Coverage %
Ajara	4,063	94.0	4,749	97.4	5,274	90.0
Tbilisi	11,657	87.7	10,156	78.0	11,403	79.2
Kakheti	3,487	97.0	3,822	95.5	3,677	85.5
Imereti	5,391	96.2	6,027	96.8	6,404	90.5
Samegrelo	2,327	95.8	2,857	90.1	3,144	81.9
Shida Kartli	2,878	98.6	2,983	87.9	2,649	67.0
Kvemo Kartli	4,875	85.0	4,826	77.7	4,765	52.6
Guria	997	93.1	1,331	98.1	1,523	84.5
Samtskhe-Javakheti	2,157	95.1	2,416	97.4	2,314	90.7
Mtskheta-Mtianeti	877	93.0	1,037	94.8	1,073	90.1
Racha-Lechkhumi and Kvemo Svaneti	226	93.8	266	69.1	283	68.6
Departments other than the MoLHSA	742	79.0	795	63.8	881	51.6
Georgia	39,677	91.2	41,265	86.9	43,390	91.4