

MATERNAL AND CHILD HEALTH*

In 2005, there were 65,810 pregnant women enrolled at women consultancy centers, 46,611 women of them were enrolled during the year 2005, of which 50.3% of these women were enrolled in the first trimester of the pregnancy.

Women consultancy centers registered 40,658 women, who terminated their pregnancies in 2005: 65.8% of these women, had at least four prenatal care visits paid by the state program. This number is 6.4% higher than in 2004.

The total number of pregnant women who were taken off the lists of women consultancy centers was 43,334; 93.8% of them carried the pregnancy to the end. 39,242 of these women (90.6%) carried the pregnancy to term, miscarriages (termination of the pregnancy before 22 weeks of the gestation age) were registered in 1.5% of the cases. In the course of the prenatal care 36,204 pregnant women were examined by a therapist, including 57.8% examinations provided in the first trimester of the pregnancy.

In the frame of the antenatal care program tests for Rh factor and syphilis were provided in 39,327 and 35,264 cases respectively. As a result 27 cases of syphilis were revealed, this is 1.2 times more than in 2004.

Among the maternal diseases complicating pregnancy, childbirth and the puerperium, which preceded the pregnancy or developed in the pregnancy anemia (8,795 cases), infections of genitourinary tract in pregnancy (2,859 cases), and thyroid gland pathologies (2,288 cases) are leading.

In 2005, health institutions registered 47,246 deliveries, including 46,537 (98.5%) women delivered in a health institution and 709 (1.5%) home deliveries.

Seventy one percent of 46,537 the in-patient deliveries were registered as normal and 29.0% as pathological.

In, 2005, in 9,073 cases a caesarean section was chosen as a method of delivery, which is 16.4% more than in 2004.

6,126 caesarean sections were primary, including 3,335 (54.4%) urgent cases. Repeated caesarean section was performed in 2,925 cases, including 1,245 (42.6%) urgent cases.

Obstetric forceps were used in 89 cases of delivery, vacuum aspiration in 80 cases respectively.

* *Data collected by the National Centre for Disease Control and Medical Statistics are presented in this chapter*

In 2005, there were registered 67 cases of intra partum and post partum infections, including 12 cases of post caesarean section peritonitis.

Perineal lacerations during delivery (2,661 cases), anemia (2,300 cases), and abnormalities of forces and labor (1,582 cases) are leading among intra partum and post partum complications.

In 2005, there were 11 cases of maternal deaths (maternal mortality ratio per 100,000 live births equals 23.4).

In 2005, more abortions than in 2004 were registered. The total number of the registered abortions is 19,734, this is 14.5% growth compared with year 2004. From the total number of abortions in 377 (1.9%) cases an abortion was performed at the first pregnancy. In young age groups the following numbers of abortions were registered: 6 – in the age group under 15 and 1,406 – in 15 – 19 age group. In 9 cases medical institutions have registered criminal abortions.

In 2005, according to the official facility reports 2,171 women have inserted intra uterine devices (IUD). The total number of the IUD users being under surveillance of the health institutions by the end of the year has reached 9,643 women. According to the same source 10,783 women have used hormonal contraception.

In 2005, 21,483 women (excluding women encountering health services for antenatal care) and 841 men encountered reproductive health centers. The total number of patients reached 22,324 persons; this is 8.9% less than in 2004. The distribution of the reasons of encounters is as follows: 1,440 cases of infertility; 6,731 cases of contraception counseling; 1,966 cases of climax; 1,972 cases of the examinations of the currently used method of contraception.

12,597 female and 161 male patients received diagnostic tests for sexually transmitted infections (STI). The total number of STI tests reached 12,758 cases; this is 19.4% more than in 2004. These tests revealed 11 cases of syphilis, 30 cases of gonorrhea, 321 cases of chlamidiosis, 2,032 cases of trichomoniasis, 1,533 cases of bacterial vaginosis, and 317 cases of papiloma virus.

In 2005, by the National Center for Disease Control and Medical Statistics there were registered 47,022 live births, including 46,334 cases of the live births happened in hospitals.

From the total number of babies delivered at hospitals (46,334), 43,546 (94.0%) newborns have got a birth weight more than 2,499 grams.

5,489 newborns (11.8% of all babies born at hospitals) were born sick or got sick after the birth. This number includes 2,797 cases of certain conditions originating in the perinatal period (51% of all cases) and 329 cases of congenital malformations, deformations and chromosomal abnormalities (6% of all cases).

Among sick newborns there were 96 babies with a very low birth weight (500 – 999 grams), 1,341 with a low birth weight (1,000 – 2,499 grams), and 4,052 with a normal birth weight (2,500 grams and more).

Furthermore, 4.3% from the total number of babies born at hospitals (1,977 newborns) were referred to preterm babies and newborn departments of other hospitals.

In 2005, in Georgia there were registered 585 cases of the early neonatal deaths. This number is 4.3% more than in 2004. 220 of them died at the maternity homes and departments, 363 died at the children clinics and 2 died at home after home deliveries.

In 2005, the total number of still births increased by 6.1% in the comparison with 2004. 80% (613) from the total number of registered cases of the still births (766) with a low birth weight (less than 2,500 grams).

According to the data collected from the in-patient and out-patient medical facilities 1,002 children died at the age less than 15 years; of which 851 cases of death were in children under one year of age, and 60 in the age group one to five years. 93% of the children died in hospitals.

In 2005, the total number of 386,414 cases of diseases was registered by children out-patient network, including 258,309 new cases. In the incident cases of diseases the following classes of diseases had high rates: diseases of the respiratory system (total number of new cases – 151,521, incidence rate per 100,000 children – 28,201.4); infectious and parasitic diseases (total number of new cases – 31,311, incidence rate per 100,000 children – 3,418.4); and diseases of the nervous system (total number of new cases – 18,549, incidence rate per 100,000 children – 2,025.1).

In Georgia 66,624 cases of hospitalization were registered, including 20,480 cases in infants.

In infant hospitalization the following classes of diseases are leading: diseases of the respiratory system (total number of hospitalizations – 9,252); certain conditions originating in the perinatal period (total number of hospitalizations – 5,344); and infectious and parasitic diseases (total number of hospitalizations – 2,981).

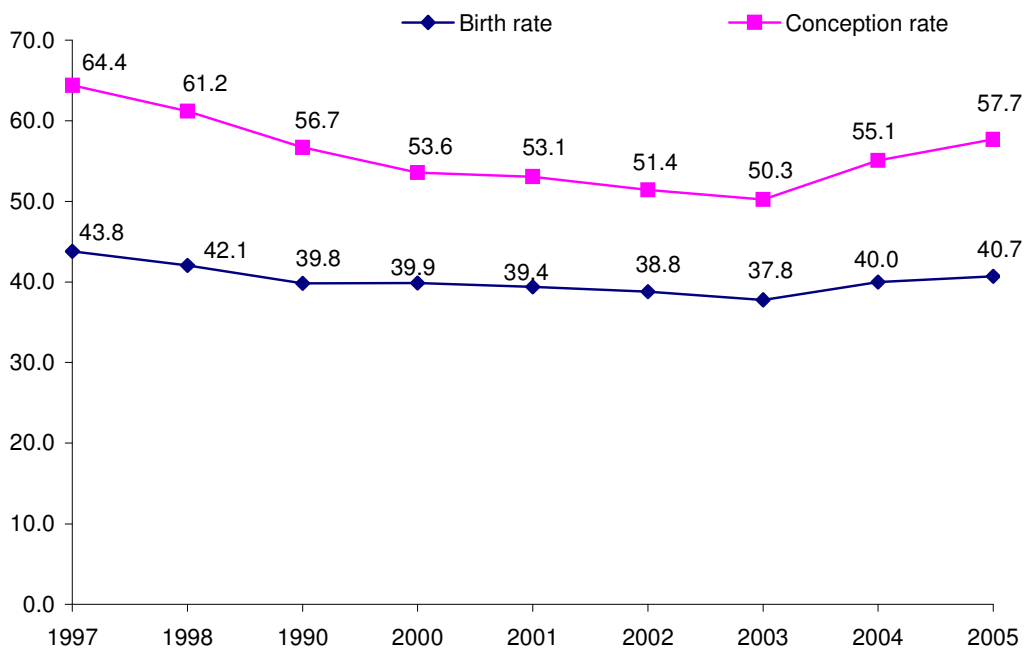


Figure 1. Birth and conception rates per 1,000 women of the reproductive age, Georgia, 1997 – 2005

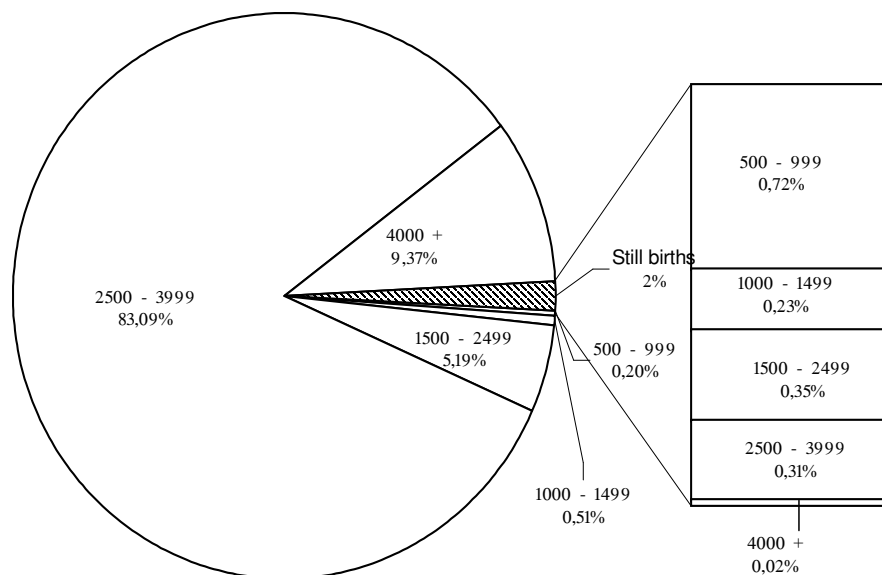


Figure 2. Birth weight structure for live births and still births, Georgia, 2005

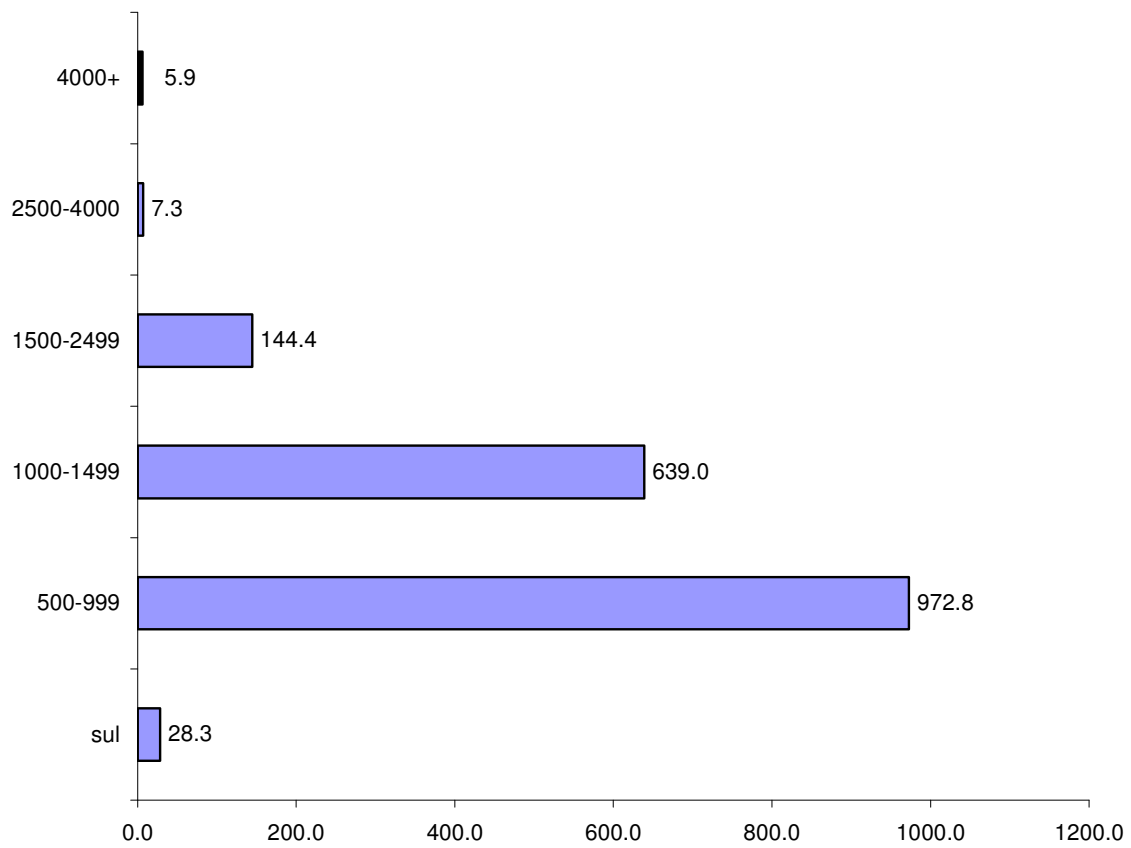


Figure 3 . Perinatal mortality rate for in-patient births by weight groups, Georgia, 2005

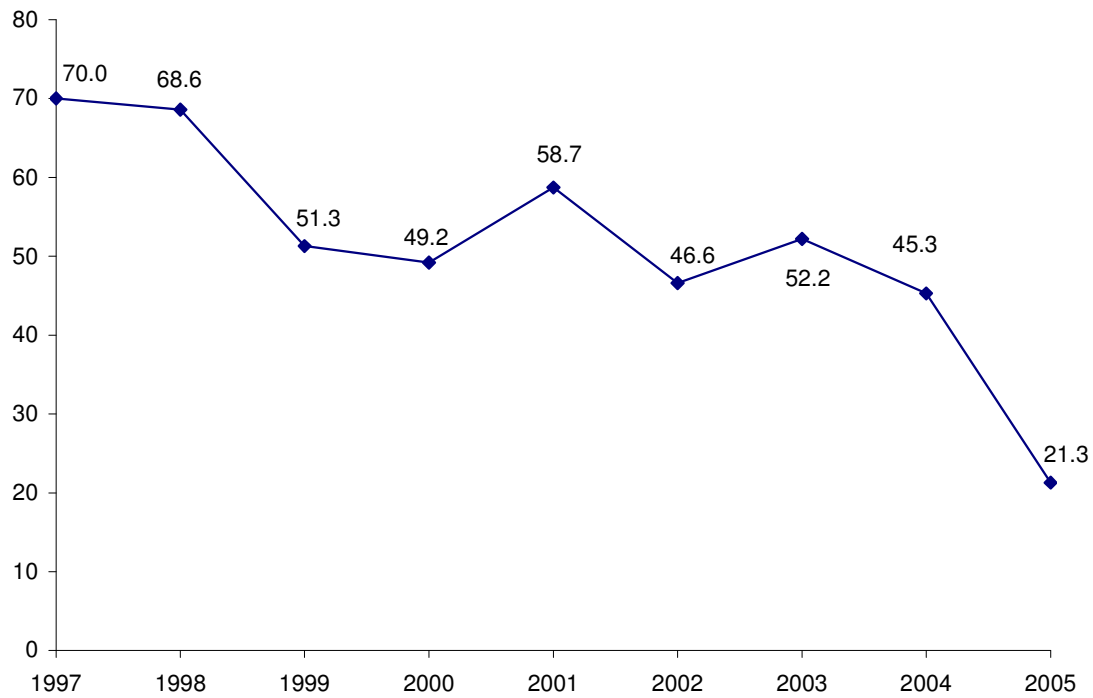


Figure 4 . Maternal mortality ratio per 100,000 live births, Georgia, 1997 – 2005

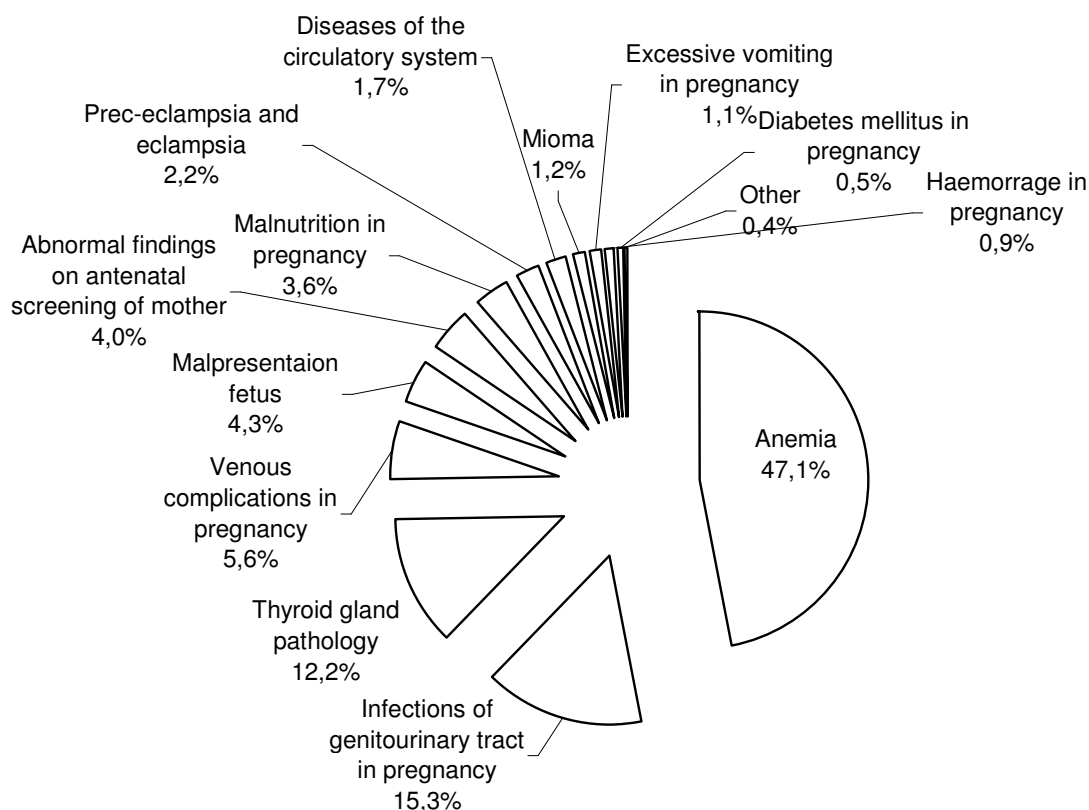


Figure 5. Maternal diseases complicating pregnancy, childbirth and the puerperium, Georgia, 2005

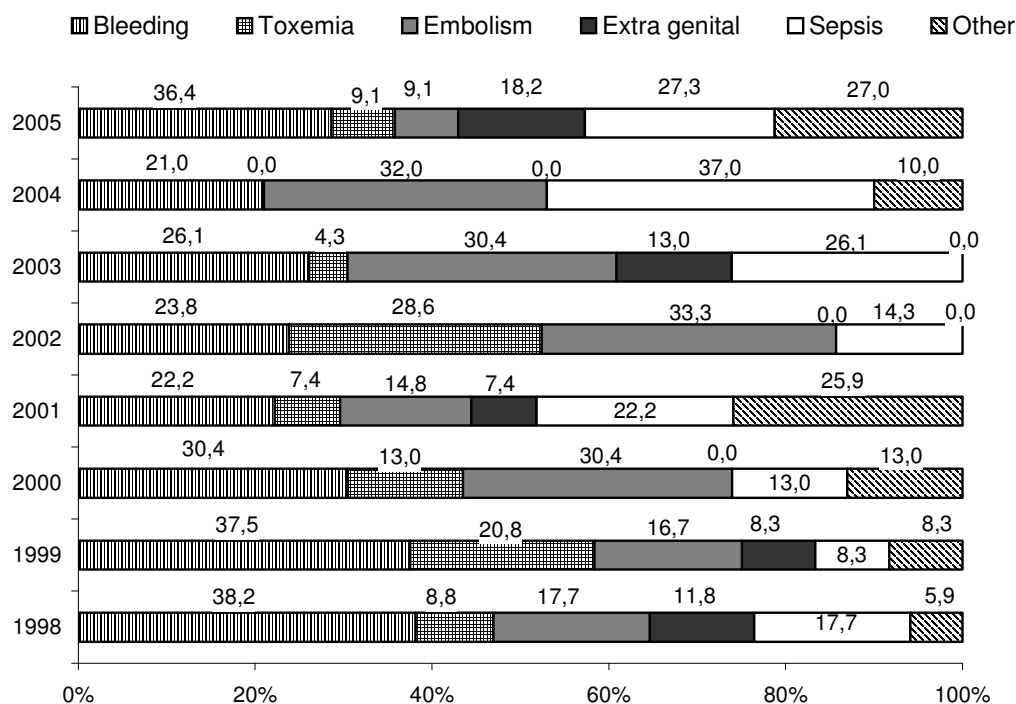


Figure 6. Maternal mortality structure according to the causes of death, Georgia, 1998 – 2005

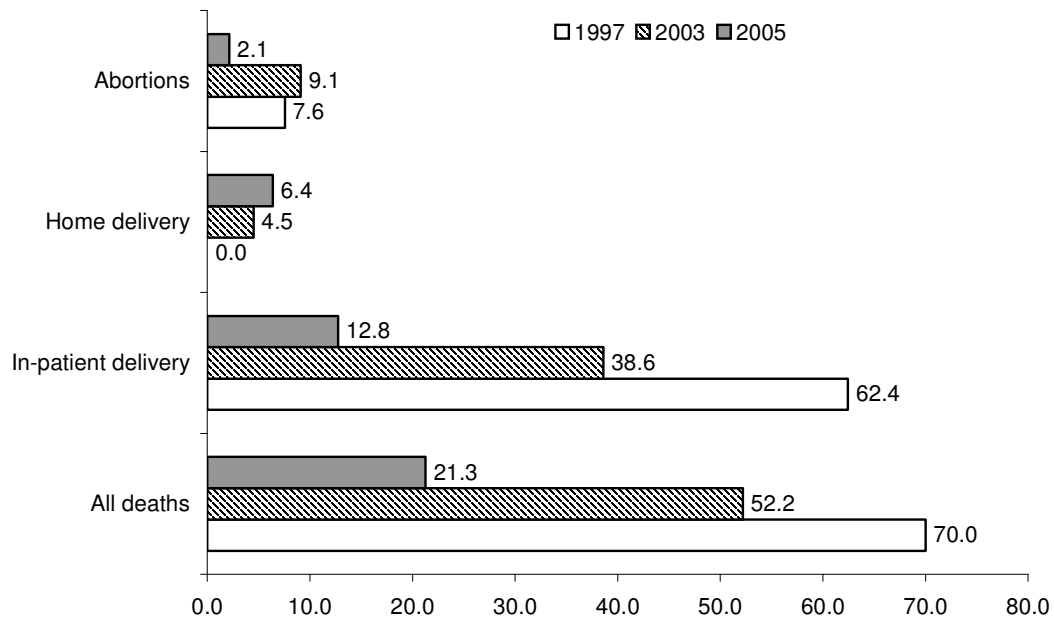


Figure 7. Maternal mortality structure by the risk – groups, Georgia, 1997, 2003 and 2005

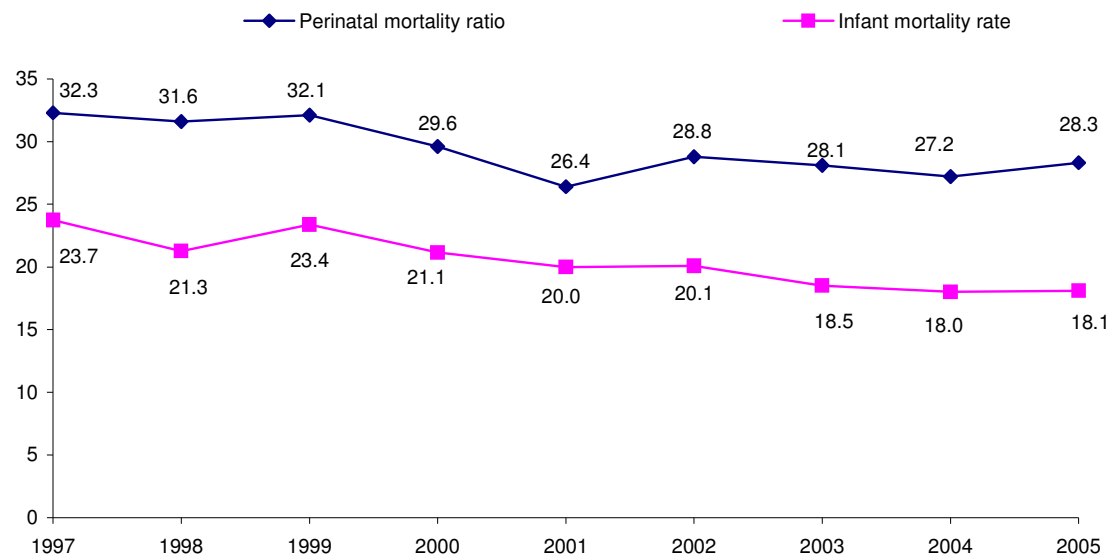


Figure 8. Perinatal mortality ratio and infant mortality ratio, Georgia, 1997 – 2005

Table 1.

Births, maternal and infant deaths, Georgia, 1999 – 2005

	1999	2000	2001	2002	2003	2004	2005
Total number of deliveries	47,669	47,191	46,370	45,263	44,396	46,734	47,246
Including at a health facility	45,801	45,156	44,787	44,091	43,170	45,554	46,537
at home	1,868	2,035	1,583	1,172	1,226	1,180	709
Total number of live births	46,827	46,765	46,006	45,033	44,093	46,373	47,022
Of which live births at home	1,419	1,957	1,467	1,144	1,149	1,028	688
Total number of still births	922	840	722	702	717	722	766
Total number of infant deaths*	1,094	989	920	907	815	834	851
Total number of early neonatal deaths	609	569	513	614	544	561	585
Total number of late neonatal deaths	66	77	165	122	179	147	123
Total number of post neonatal deaths	419	343	242	116	92	126	143
Total number of maternal deaths	24	23	27	21	23	21	11
Still birth rate per 1,000 births	19.3	17.6	15.4	15.4	16.0	15.3	16.0
Early neonatal mortality rate per 1,000 live births	13.0	12.2	11.1	13.5	12.3	12.1	12.4
Late neonatal mortality rate per 1,000 live births	1.4	1.6	3.5	2.6	4.1	3.2	2.6
Perinatal mortality ratio	32.1	29.6	26.4	28.8	28.1	27.7	28.3
Infant mortality ratio per 1,000 live births	23.4	21.1	20.0	20.1	18.5	18.0	18.1
Maternal mortality ratio per 100,000 live births	51.3	49.2	58.7	46.6	52.2	45.3	23.4

Table 2.

Birth and infant deaths by regions according to the health statistics, Georgia, Georgia, 2005

	Number of live births	Number of still births	Still birth rate per 1,000 births	Number of infant deaths	Infant mortality ratio per 1,000 live births	Number of early neonatal deaths	Early neonatal death rate per 1,000 live births	Perinatal mortality ratio per 1,000 births
Ajara	4,386	78	17.5	101	23.0	61	13.1	31.1
Tbilisi	19,362	358	17.9	516	26.3	342	17.6	35.0
Kakheti	3,061	46	14.8	22	7.2	19	6.2	20.1
Imereti	6,344	108	16.7	125	19.7	106	16.7	33.1
Samegrelo	3,393	31	9.0	22	6.5	19	5.6	14.6
Shida Kartli	2,574	44	16.0	22	8.5	17	6.6	23.3
Kvemo Kartli	3,850	60	15.4	20	5.2	10	2.6	17.9
Guria	900	9	9.9	5	5.6	2	2.2	12.1
Samtskhe-Javakheti	2,131	23	10.7	14	6.6	7	3.3	13.9
Mtskheta-Mtianeti	566	9	15.7	4	7.1	2	3.5	19.1
Racha-Lechkhumi and Kvemo Svaneti	167	0	0	0	0	0	0	0
Abkhazia	18	0	0	0	0	0	0	0
Georgia	47,022	766	16.0	851	18.1	585	12.4	28.3

* In 1999 – 2001, the total number of infant deaths included only in-patient deaths. Since 2002, the total number of infant deaths includes both in-patient and out-patient deaths registered by health institutions

Table 3.

Incidence and Case fatality rates of diseases in newborns according to the in-patient facilities reports, Georgia, 2005

	Total number of cases	Incidence rate per 1,000 live births	Number of early neonatal deaths	Case fatality rate %
Total	5489	116.7	583	10.6
Including:				
Certain conditions originating in the perinatal period	4743	100.9	524	11.0
Slow fetal growth and fetal malnutrition	782	16.6	12	1.5
Birth trauma	509	10.8	46	9.0
Intracranial laceration and hemorrhage due to birth injury	231	4.9	36	15.6
Respiratory disorders specific to the perinatal period	2797	59.5	452	16.2
Intrauterine hypoxia and birth asphyxia	2032	43.2	74	3.6
Respiratory distress of newborn	522	11.1	146	28.0
Congenital pneumonia	103	2.2	7	6.8
Infections specific to the perinatal period	203	4.3	106	52.2
Bacterial sepsis of newborn	120	2.6	100	83.3
Hemorrhagic disorder of fetus and newborn	107	2.3	6	5.6
Fetal blood loss	11	0.2	0	
Intracranial nontraumatic hemorrhage of fetus and newborn	54	1.1	50	92.6
Hematological disorders of fetus and newborn	345	7.3	7	2.0
Hemolytic disease of fetus and newborn due to isoimmunization	297	6.3	6	2.0
Disseminated intravascular coagulation of fetus and newborn	8	0.2	0	0
Acute respiratory infections	16	0.3	0	0
Pneumonia	6	0.1	0	0
Infections of the skin and subcutaneous tissue	16	0.3	0	0
Congenital malformations, deformations and chromosomal abnormalities	329	7.0	49	14.9
Other diseases of newborn	385	8.2	29	7.5

Table 4.

Caesarean sections structure, Georgia, 2004 – 2005

	2004			2005		
	Number of cases	Total number per 1,000 live births	Percentage from the total number	Number of cases	Total number per 1,000 live births	Percentage from the total number
All types	7793	168.0	100	9073	193.0	100
Including						
Planned	3989	-	51.2	4471	-	49.3
Urgent	3766	-	48.3	4580	-	50.5
Unknown	38	-	0.5	22	-	0.2

Table 5.

Essential data on breastfeeding, Georgia, 2004 – 2005

	2004		2005	
	Total number of infants breastfed	% from the total number of live births	Total number of infants breastfed	% from the total number of live births
Data collected from the maternity homes and departments				
Breastfeeding started during the first hour after birth	29,705	64.1	26,766	56.9
Beast feeding started in 1-8 hours after birth	7,878	17.0	10,806	23.0
Beast feeding started in 8-24 hours after birth	4,550	9.8	5,460	11.6
Total number of the breastfed newborns	44,386	95.7	45,131	96.0
Data collected from the children policlinics:				
Breastfed at the age of 3 months	22,927	49.4	24,486	52.1

Table 6.

Abortions and contraception, Georgia, 1991 – 2005

	Total number of live births	Abortions		Abortion ratio per 1,000 live births	Number intra uterine devices inserted	Number of women to whom hormonal contraception was prescribed
		Total number	Including mini abortions			
1991	89,091	59,384	9,772	717.7	15,790	7,732
1992	72,631	50,748	10,256	730.8	9,588	5,419
1993	61,594	45,131	8,391	789.4	8,379	3,468
1994	57,311	45,858	10,295	857.9	9,127	3,983
1995	56,341	39,538	7,522	715.2	9,538	5,181
1996	53,300	30,003	5,867	554.1	10,817	3,699
1997	52,851	23,403	5,541	447.6	8,171	4,869
1998	49,588	21,018	6,806	423.8	9,148	6,276
1999	46,827	18,306	6,549	390.9	11,539	9,142
2000	46,765	14,951	5,414	319.7	9,120	7,865
2001	46,006	15,008	5,330	326.2	9,032	8,755
2002	45,033	13,908	5,143	308.8	8,252	8,143
2003	44,093	13,834	5,183	313.7	9,084	9,340
2004	46,373	17,210	6,552	371.1	9,047	10,996
2005	47,022	19,734	6,710	419.7	9,643	10,783

Table 7.

Abortions by the age groups, Georgia, 2005

Type of abortions	All ages	Including in the following age group									
		Under 14	15 - 19	20 - 24	25 - 29	30 - 34	35 - 39	40 - 44	45-49	50 +	
Total number	19,734	6	1,406	6,012	6,450	3,406	1,938	438	29	49	
Abortion rate per 100,000 women in the age group	1,700.7	3.3	792.8	3,645.8	4,045.6	2,184.1	1,130.3	246.4	18.9	22.8	
Including:											
Spontaneous abortion	2,710	0	335	851	738	468	264	41	9	4	
Abortion rate per 100,000 women in the given age group	233.5	0.0	188.9	516.1	462.9	300.1	154.0	23.1	5.9	1.9	
Induced abortions in the first trimester (less than 12 weeks)	10,051	6	650	3,047	3,312	1,698	971	330	18	19	
Abortion rate per 100,000 women in the given age group	866.2	3.3	366.5	1,847.8	2,077.4	1,088.9	566.3	185.7	11.7	8.8	
Induced therapeutic abortions	212	0	32	91	43	25	15	6	0	0	
Abortion rate per 100,000 women in the given age group	18.3	0.0	18.0	55.2	27.0	16.0	8.7	3.4	0.0	0.0	
Social abortions at the gestational age 12 - 22 weeks	42	0	3	15	11	10	2	0	1	0	
Abortion rate per 100,000 women in the given age group	3.6	0.0	1.7	9.1	6.9	6.4	1.2	0.0	0.7	0.0	
Mini abortions	6,710	0	386	2,004	2,343	1,205	684	61	1	26	
Abortion rate per 100,000 women in the given age group	578.3	0.0	217.6	1,215.3	1,469.6	772.7	398.9	34.3	0.7	12.1	
Number abortions at the first pregnancy	377	0	88	107	71	55	49	7	0	0	
Abortion rate per 100,000 women in the given age group	32.5	0.0	49.6	64.9	44.5	35.3	28.6	3.9	0.0	0.0	

Table 8.

In-patient surgical operations on the female genital system and obstetric - gynecologic operations, Georgia, 2003 - 2005

	2003		2004		2005	
	Total number	Case fatality rate (%)	Total number	Case fatality rate (%)	Total number	Case fatality rate (%)
Total number of operations on the female genital organs	6,970	0.1	7,500	0.12	8,593	0.07
Including						
endometrectomy (excluding abortions)	832	0	1,445	0.00	2,499	0
female sterilization	186	0	129	0.00	185	0
amputation of uterus	-	-	1,751	0.17	1,638	0
extirpation of uterus	-	-	1,383	0.22	1,910	0.21
resection of ovary	-	-	450	0.22	812	0.00
ovarectomy	-	-	533	0.19	347	0.29
on external genital organs with tissue extirpation	-	-	163	0.00	292	0
obstetrical and gynecological surgery	19,620	0.02	22,692	0.01	24,086	0.01
Including						
due to ectopic pregnancy	951	0.1	950	0.00	805	0.12
forceps	116	0	129	0.00	88	0
vacuum extraction	64	0	92	0.00	79	0
cesarean section	6,259	0.01	7,793	0.01	9,073	0
minor cesarean section	84	0	47	0.00	39	0
operations of fetal destruction	72	0	51	0.00	32	0
abortion	8,651	0.01	10,682	0.01	12,934	0

Table 9.

Child deaths registered by health institutions, Georgia, 2005

	Children 0 – 14 years of age				Including							
					Infants				Children under 5 years of age			
	Total number of deaths	Mortality rate per 1,000 children	Percentage of the in-patient deaths	Percentage of the out-patient deaths	Total number of deaths	Mortality rate per 1,000 live births	Percentage of the in-patient deaths	Percentage of the out-patient deaths	Total number of deaths	Mortality rate per 1,000 live births	Percentage of the in-patient deaths	Percentage of the out-patient deaths
Ajara	118	130.6	80.5	19.5	101	23.0	84.2	15.8	110	25.1	80.9	19.1
Tbilisi	614	291.6	99.0	1.0	516	26.3	99.6	0.4	558	28.4	99.5	0.5
Kakheti	26	30.7	73.1	26.9	22	7.2	86.4	13.6	25	8.2	76.0	24.0
Imereti	135	99.3	97.8	2.2	125	19.7	98.4	1.6	127	20.0	97.6	2.4
Samegrelo	27	29.0	88.9	11.1	22	6.5	100.0	0	23	6.8	100.0	0
Shida Kartli	27	39.4	88.9	11.1	22	8.5	100.0	0	22	8.5	100.0	0
Kvemo Kartli	27	22.4	59.3	40.7	20	5.2	70.0	30.0	21	5.5	66.7	33.3
Guria	6	21.2	83.3	16.7	5	5.6	100.0	0	5	5.6	100.0	0
Samtskhe - Javakheti	18	36.6	38.9	61.1	14	6.6	50.0	50.0	16	7.5	43.8	56.3
Mtskheta-Mtianeti	4	15.4	50.0	50.0	4	7.1	50.0	50.0	4	7.1	50.0	50.0
Racha-Lechkhumi and Kvemo Svaneti	0	0	0	0	0	0	0	0	0	0	0	0
Georgia	1,002	109.4	93.0	7.0	851	18.1	95.5	4.5	911	19.4	94.4	5.6

Table 10.

Child morbidity by the main classes of diseases, Georgia, 2005

	Number of registered cases	Prevalence rate per 100,000 children	Number of new cases	Incidence rate per 100,000 children
Total number of cases	368,414	40,222.3	258,309	28,201.4
	Including:			
Certain infectious and parasitic diseases	40,852	4,460.1	31,311	3,418.4
Neoplasms	502	54.8	166	18.1
Endocrine, nutritional and metabolic diseases	29,539	3,225.0	7,906	863.2
Diseases of the blood and blood forming organs and certain disorders involving the immune mechanism	8,651	944.5	4,955	541.0
Mental and behavioral disorders	5,821	635.5	1,596	174.2
Diseases of the nervous system	38,581	4,212.2	18,549	2,025.1
Diseases of the circulatory system	6,311	689.0	1,594	174.0
Diseases of the respiratory system	177,023	19,326.8	151,521	16,542.6
Diseases of the digestive system	18,123	1,978.6	12,609	1,376.6
Diseases of the genitourinary system	7,013	765.7	4,914	536.5
Pregnancy, childbirths and the puerperium	11	6.0	10	5.5
Diseases of the skin and subcutaneous tissue	13,353	1,457.8	10,688	1,166.9
Diseases of the musculoskeletal system and connective tissue	3,046	332.6	1,113	121.5
Congenital malformations, deformations and chromosomal abnormalities	4,975	543.2	911	99.5
Certain conditions originating in the perinatal period	3,749	409.3	2,462	268.8
Symptoms, signs and abnormal clinical and laboratory findings, not elsewhere classified	3,433	374.8	1,200	131.0
Injury, poisoning and certain other consequences of external causes	7,431	811.3	6,804	742.8

Table 11.

Child hospitalization, Georgia, 2005

	Children under 15 years of age			Including infants		
	Number of cases	Number of hospitalizations per 100,000 children	Case fatality rate %	Number of cases	Number of hospitalizations per 100,000 children	Case fatality rate %
Total Number of hospitalizations	66,624	7,273.8	1.4	20,480	45,309.7	4.0
		Including:				
Certain infectious and parasitic diseases	9,916	1,082.6	0.5	2,981	6,595.1	1.2
Neoplasms	659	71.9	1.4	184	407.1	0.5
Endocrine, nutritional and metabolic diseases	323	35.3	0.3	16	35.4	6.3
Diseases of the blood and blood forming organs and certain disorders involving the immune mechanism	364	39.7	1.1	109	241.2	2.8
Mental and behavioral disorders	48	5.2	0	22	48.7	0
Diseases of the nervous system	2,890	315.5	0.8	929	2,055.3	1.4
Diseases of the circulatory system	537	58.6	2.6	104	230.1	5.8
Diseases of the respiratory system	32,973	3,599.9	0.2	9,252	20,469.0	0.6
Diseases of the digestive system	4,281	467.4	0.4	318	703.5	4.7
Diseases of the genitourinary system	1,346	147.0	0.1	96	212.4	
Pregnancy, childbirths and the puerperium	17	1.9	0	-	-	-
Diseases of the skin and subcutaneous tissue	951	103.8	0	166	367.3	0
Diseases of the musculoskeletal system and connective tissue	391	42.7	0	59	130.5	0
Congenital malformations, deformations and chromosomal abnormalities	1,422	155.2	5.8	487	1,077.4	12.1
Certain conditions originating in the perinatal period	5,351	584.2	11.3	5,344	11,823.0	11.3
Symptoms, signs and abnormal clinical and laboratory findings, not elsewhere classified	1,094	119.4	2.2	179	396.0	10.6
Injury, poisoning and certain other consequences of external causes	4,061	443.4	0.5	234	517.7	0.9

Table 12.

Infant morbidity, Georgia, 2005

	Number of new cases	Incidence rate per 100,000 infants
Total Number	63,421	140,311.9
Including:		
Certain infectious and parasitic diseases	3,811	8,431.4
Neoplasms	69	152.7
Diseases of the blood and blood forming organs and certain disorders involving the immune mechanism	2,579	5,705.8
Endocrine, nutritional and metabolic diseases	2,310	5,110.6
Mental and behavioral disorders	39	86.3
Diseases of the nervous system	5,223	11,555.3
Diseases of the eye and adnexa	2,556	5,654.9
Diseases of the ear and mastoid process	2,728	6,035.4
Diseases of the circulatory system	141	311.9
Diseases of the respiratory system	33,618	74,376.1
Diseases of the digestive system	1,905	4,214.6
Diseases of the skin and subcutaneous tissue	2,115	4,679.2
Diseases of the musculoskeletal system and connective tissue	531	1,174.8
Diseases of the genitourinary system	1,477	3,267.7
Congenital malformations, deformations and chromosomal abnormalities	2,241	4,958.0
Certain conditions originating in the perinatal period	832	1,840.7
Symptoms, signs and abnormal clinical and laboratory findings, not elsewhere classified	829	1,834.1
Injury, poisoning and certain other consequences of external causes	417	922.6